



**District of Invermere
Wastewater Treatment Plant
Annual Report to B.C. Ministry of Environment**

April 2026

EXECUTIVE SUMMARY

This annual report summarizes wastewater treatment plant performance, effluent quality, and receiving environment monitoring for the District of Invermere wastewater treatment plant (WWTP) for the 2025 calendar year, as required under Municipal Wastewater Regulation (MWR) registration #17577 and the associated monitoring and reporting plan (Appendix 1).

- Effluent discharge is primarily to ground via Rapid Infiltration Basins (RIBs); the Toby Creek outfall is for emergency use only.
- Flow: Average daily discharge in 2025 was approximately 1,079 m³/d, with one daily exceedance of the 2,275 m³/d maximum (2,283 m³/d) associated with an effluent piping blockage and subsequent equalization release.
- Effluent quality (plant effluent/influent to RIBs): Six (6) of twenty-four (24) samples exceeded the 45 mg/L CBOD₅ limit, and seven (7) of twenty-four (24) samples exceeded the 60 mg/L TSS limit.
- Toby Creek discharge: No discharge events to Toby Creek occurred in 2025.
- Receiving environment monitoring: Groundwater monitoring results were consistent with an effluent plume moving in a north-easterly direction (away from Toby Creek), with no upward trends evident for the parameters assessed. Results were generally below applicable B.C. water quality guideline values referenced in the report.
- Monitoring notes: The up-gradient reference Well 5 was dry for three of the quarterly monitoring events in 2025.

Table ES-1: 2025 Compliance Summary (MWR Registration #17577)

Parameter	Unit	Applicable limit	2025 monitoring frequency	2025 results summary	Compliance status
Maximum discharge rate (daily flow)	m ³ /d	MWR: 2,275 (maximum)	Continuous (data logger); reported quarterly	Average daily flow: 1,079; maximum daily flow: 2,283; exceedances: 1 day	1 exceedance (see Section 2.1)
Carbonaceous biochemical oxygen demand (CBOD ₅)	mg/L	MWR: 45 (maximum acceptable at any time). WSER (if emergency discharge to Toby Creek): 25 (quarterly average)	Twice monthly; reported quarterly	Samples: 24; exceedances: 6	6 exceedances (see Section 2.2)

Total suspended solids (TSS)	mg/L	MWR: 60 (maximum acceptable at any time). WSER (if emergency discharge to Toby Creek): 25 (quarterly average)	Twice monthly; reported quarterly	Samples: 24; exceedances: 7	7 exceedances (see Section 2.2)
Ammonia	mg/L	MWR: 0.5 (maximum acceptable at any time)	Twice monthly; reported quarterly	Not summarized in this report narrative; see quarterly reporting and Appendix 3 COAs	Refer to quarterly results

Notes: MWR limits are maximum acceptable concentrations at any time. WSER limits apply if an emergency discharge to Toby Creek occurs; no discharge events to Toby Creek were recorded in 2025.

Key 2025 initiatives included aeration upgrades to Lagoons 1–3, installation of dissolved oxygen monitors following Lagoons 1 and 2, upgrades to blower motors and variable frequency drives, rebuilding the mechanical screen, lift station pump replacement, installation of collection system flow/capacity monitoring equipment, electrical connection updates for mobile generator deployment, sewer cleaning, and sewer main rehabilitation. Planned 2026 work includes continued sewer cleaning and CCTV/rehabilitation programs, SCADA system improvements, and initiation of a hydrogeological assessment to inform current and future RIB disposal capacity.

1. INTRODUCTION

This report is designed to fulfil the annual reporting requirements for the District of Invermere (DOI) wastewater treatment plant (WWTP) to the B.C. Ministry of Environment (MOE). The requirements for the annual monitoring report are outlined in the attached Appendix 1. This report is to cover the 2025 year.

1.1. Plant Specifications

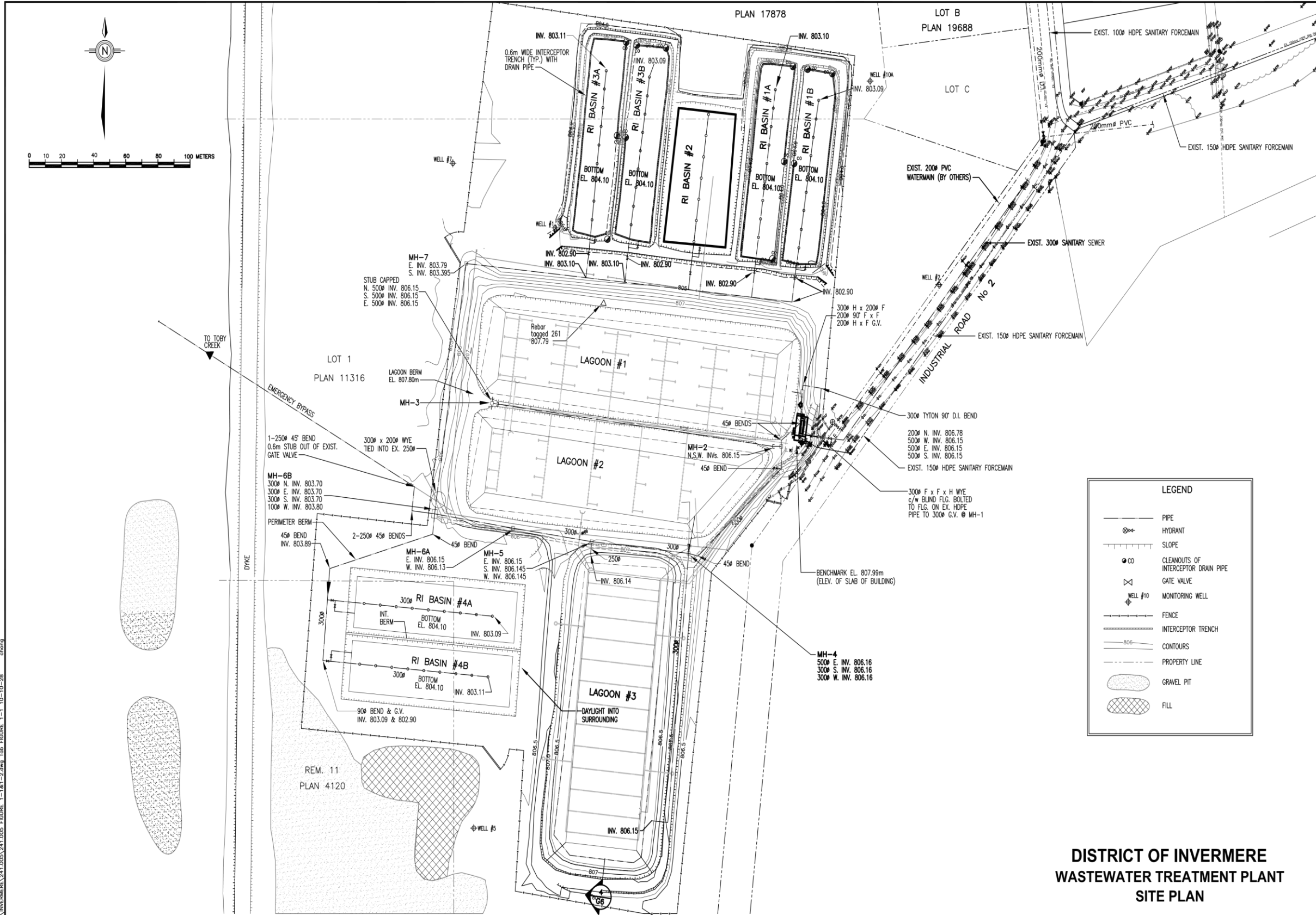
The DOI’s WWTP consists of:

- Headworks building with two influent channels (one channel with macerator and mechanical screen and the other channel, operating as emergency bypass, manual bar screen) and a Motor Control Centre (MCC) room.
- Three partial mix aerated lagoons (Lagoons 1, 2, and 3).
- Blower building for aeration equipment.

- Seven Rapid Infiltration Basins (RIB) operated in pairs, which include RIB 1A, 1B, 2, 3A, 3B, 4A, 4B. Effluent is discharged to ground via the RIBs.
- An outfall to Toby Creek for emergency uses only.

Figure 1 shows an overview of the plant and its main features. A block flow diagram of the plant showing process flow, piping, and treatment units is illustrated in Figure 2.

The design parameters, relevant current flows, and loading information for the WWTP unit processes are summarized in Table 1. The estimated residual (currently unused) capacity is included for comparison. As shown, the hydraulic capacity at the WWTP headworks (230 L/s for the screens and 200 L/s for the influent flow meter) is much greater than the current estimated Peak Wet Weather Flow (PWWF) of about 50 L/s. Table 1 shows that the current process loading to the lagoon system (maximum monthly flow (MMF) in 2025 was about 1328 m³/d) compared to the design flow of 2,500 m³/d, leaving a spare capacity of about 1172 m³/d.



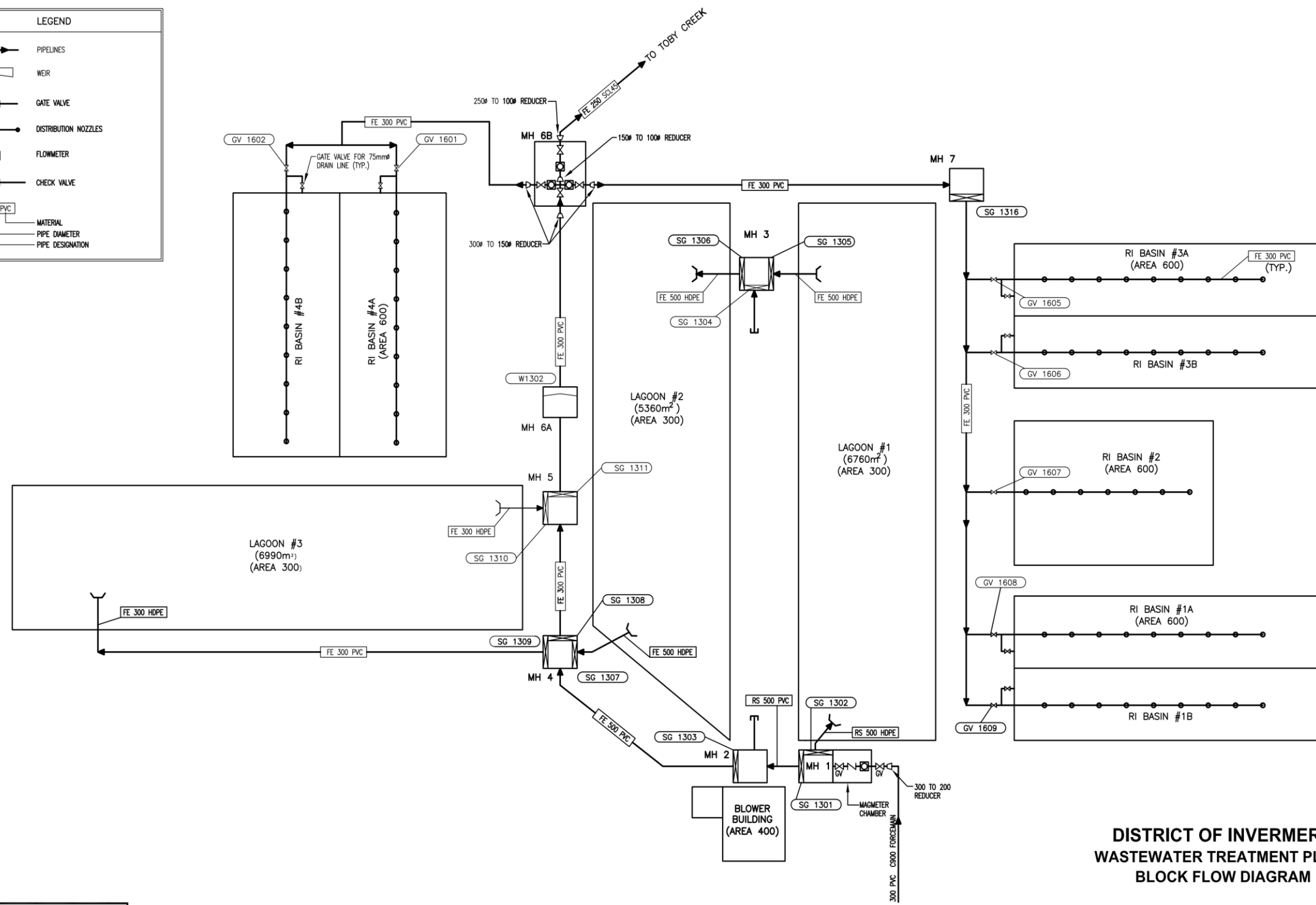
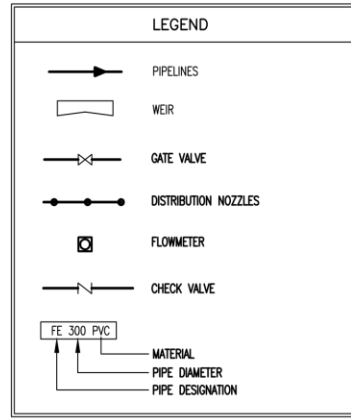
**DISTRICT OF INVERMERE
WASTEWATER TREATMENT PLANT
SITE PLAN**

FIGURE 1-1

Dayton & Knight Ltd.
CONSULTING ENGINEERS
DRAWN BY: CWV
DWG. No. 241.005

Figure 1: DOI WWTP Site Plan

FILE: P:\PROJECTS\INVERMERE\241.005\241.005.dwg, FIGURE 1-1, 10-10-28



**DISTRICT OF INVERMERE
WASTEWATER TREATMENT PLANT
BLOCK FLOW DIAGRAM**

FIGURE 1-2

FILE: P:\PROJECTS\INVERMERE\241.005\241.005_1-1-1-2.dwg, FIGURE 1-1-1-2.dwg, FIGURE 1-2, 10-10-28



Figure 2: DOI WWTP Block Flow Diagram

Table 1: Design Capacity of District of Invermere Treatment Facility

Unit Process	Governing Design Parameter	Design Capacity	Current WWTP Flow or Load ¹	WWTP Unused Capacity
Headworks	PWWF	230 L/s	50 L/s	180 L/s
Influent Flow Meter	PWWF	200 L/s	50 L/s	150 L/s
Lagoon System	MMF	2,500 m ³ /d	1328 m ³ /d	1172 m ³ /d
Infiltration Basins	MMF	2,500 m ³ /d	1328 m ³ /d	1172 m ³ /d

1.2. Regulatory Framework

The District's WWTP is licensed to operate through registration #17577 of the Municipal Wastewater Regulation (MWR). The MWR in BC governs the discharge of municipal wastewater and ensures compliance with environmental standards to protect both public health and the environment. Based on the District's MWR registration, it operates under a Class C effluent permit, which stipulates the following:

- 45mg/L of Carbonaceous Biochemical Oxygen Demand (CBOD) maximum concentration;
- 60mg/L of Total Suspended Solids (TSS) maximum concentration; and
- No requirement for effluent disinfection.

At the time of construction, the effluent quality requirements stipulated in the Federal Wastewater Systems Effluent Regulations (WSER) had not been introduced. Currently, the WWTP is designed to meet the maximum acceptable limits noted above and outlined in the provincial MWR registration. Should the District need to discharge to the Toby Creek outfall, which has not been utilized since 2005, it would be required to meet the quarterly average of 25 mg/L TSS and CBOD as outlined in the WSER. A summary of the regulatory limits can be seen in Table 2 below.

Table 2: Effluent Quality Regulatory Requirements

Effluent Discharge Parameter	Unit	MWR ¹	WSER ¹
Maximum Discharge Rate ²	m ³ /day	2,275	-
Effluent 5-Day CBOD ³	mg/L	45	25
Effluent TSS ³	mg/L	60	25
Ammonia	mg/L	0.5	1.25

1. MWR limits are maximum acceptable concentrations at any time, whereas the WSER limits are based on quarterly averages.

2. MWR Maximum Discharge Rate requires continuous monitoring, with results reported quarterly.

3. MWR testing for CBOD, TSS, and Ammonia are twice monthly, with measurements taken 7 days apart, and reported quarterly.

1.3. Source Control and Water Conservation

The District of Invermere has implemented Bylaw Number 1297 to prescribe water use restrictions, with the purpose of protecting, preserving and maintaining the community water supply. The bylaw imposing different levels of water use restrictions for users in accordance with severity of supply. A detailed description of this Bylaw is available on the District's website: www.invermere.net.

1.4. Update on Initiatives and Achievements

The District undertook the following actions to improve the wastewater system during 2025:

- Completed aeration upgrades for Lagoons 1, 2 and 3;
- Added Dissolved Oxygen monitors following Lagoons 1 and 2;
- Upgraded air blower motors and variable frequency drive (VFD) for both blowers on the aeration system. The sheaves on the blower and motors were re-sized to increase the RPM resulting in greater output.
- Installed wastewater collection system flow/capacity monitoring equipment. Currently installed at 13th Ave and 12A Ave (manhole 280), between 4th Ave and 7a Ave (along railroad tracks, manhole 505), and on 10th Street (manhole 517);
- Rebuilt the mechanical screen at the WWTP; and
- Replaced the pump at Lift Station 1.
- Installed the correct electrical connections for DOI owned mobile generators to supply power to various lift stations that lack permanent backup power.
- Completed 5-weeks of sewer cleaning through use of jet rodding equipment.
- Completed approximately 0.348km of sewer collection system re-lining.

1.5. Planned Improvements

The District intends to undertake the following maintenance/improvements to the system in 2026:

- Continuation of sewer cleaning through use of jet rodding equipment;
- Continuation of sewer main re-lining/patching/CCTV program;
- Improvements to the existing SCADA system; and
- Initiation of a hydrogeological assessment at current RIB and future RIB locations to provide information pertaining to increasing disposal capacity. Disposal capacity, as per discussions with external consultants, is the largest constraint at the WWTP under current and future conditions.

1.6. Historic and Projected Service Population

Table 3 summarizes the population based on data from the 2021 Census, the current population as of 2025, and the expected population based on a 1.7% compounding growth.

Table 3: Population Projections Assuming 1.7% Compounding Growth.

Year	Projected Population
2021 (Census)	3,917
2025 (Existing)	4,192
2035 (10-year)	4,967
2045 (20-year)	5,884
2075 (50-year)	9,775

1.7. Wastewater Sampling Plan – 2025 & 2026

A summary of the required wastewater testing, based on the current MWR registration, is illustrated below in Table 4. The complete MWR registration for the DOI WWTP can be seen in Appendix 2. In addition to the required sampling outlined in the MWR registration, the DOI has implemented continuous data loggers to record groundwater levels in each of its monitoring wells.

Table 4: DOI Wastewater Sampling Plan

	Plant Effluent ³	Well #5	Well #10A	Well #11	Well #117
Parameter					
pH (field test)	M/I	Q/I	Q/I	Q/I	Q/I
Temperature (field test)	M/I	Q/I	Q/I	Q/I	Q/I
Flow	D/CON.				
BOD ₅ ¹	M/G				
TOC ²	QY/G				
TSS ³	M/G				
Ammonia (as nitrogen)	Q/G	Q/G/P	Q/G/P	Q/G/P	Q/G/P
Nitrate (as nitrogen)	Q/G	Q/G/P	Q/G/P	Q/G/P	Q/G/P
Nitrite (as nitrogen)	Q/G	Q/G/P	Q/G/P	Q/G/P	Q/G/P
Sodium	Q/G	Q/G/P	Q/G/P	Q/G/P	Q/G/P
Chloride	Q/G	Q/G/P	Q/G/P	Q/G/P	Q/G/P

1. BOD₅ – means the 5-day biochemical oxygen demand.

2. TOC – means total organic carbon.

3. TSS – means total suspended solids or non-filterable residue.

Sampling Frequency:

D – means daily.

M – means monthly.

Q – means quarterly.

QY – means quarterly for one year.

Sample Type:

G – means grab sample.

CON. – means continuous using a data logger.

Note: Flow meters shall be calibrated, with frequency and procedures in operating plan.

I – means field in-situ test.

P – means the water in the well has been purged prior to obtaining the grab sample.

2. EFFLUENT FLOW AND QUALITY ANALYSIS

2.1. WWTP Effluent Flow

The maximum allowable daily discharge from the WWTP is 2,275 m³/d. The daily discharge flows for 2025 are illustrated in Figure 3 (effluent flow was recorded daily using a continuous data logger). As shown, the plant discharge averaged about 1,079 m³/d during 2025, with only one daily flow measuring 2,283 m³/d exceeding the allowable maximum of 2,275 m³/d.

Reviewing this exceedance event, operators noted a blockage in the effluent piping; once cleared, the accumulated influent from the previous day (21-July-25) was released as lagoon levels equalized, resulting in higher-than-normal flows. There does not appear to be any upward trend in plant flow rate.

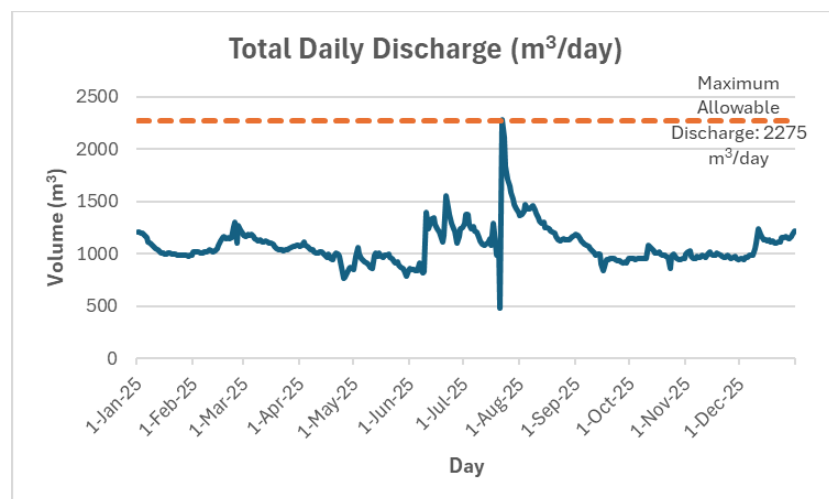


Figure 3: WWTP Total Daily Discharge

2.2. WWTP Effluent Quality

The plant effluent (influent to the rapid infiltration basins) concentrations of CBOD and TSS for the 2025 year, based on twice monthly composite samples, are summarized in Figures 4 and 5 respectively, together with the maximum allowable values specified in the WWTP registration under the MWR (Appendix 2). Laboratory certification of analysis (COA) and the corresponding raw data are included in Appendix 3. As shown in Figure 4, six effluent samples collected in 2025 exceeded the maximum allowable 5-Day CBOD of 45 mg/L. Figure 5 shows that seven of the plant effluent samples taken during 2025 contained TSS concentrations above the allowable limit of 60 mg/L.

The WWTP had no recorded discharge events to the Toby Creek in 2025.

The exceedances in CBOD₅ and TSS are considered to be related to biological treatment performance in the aerated lagoons, which is strongly influenced by dissolved oxygen (DO) availability and mixing. Prior to the 2025 upgrades, DO supply and diffuser performance were

not optimized, increasing the likelihood of low-DO conditions (particularly during cold-weather operation and/or higher loading periods). Under low-DO conditions, aerobic biological activity and solids stabilization can be reduced, which may contribute to elevated CBOD₅ and higher residual suspended solids in the plant effluent.

Corrective actions were implemented in 2025 through significant aeration system upgrades. The work included improvements to maximize available aeration output from the existing blowers, installation of new fine-bubble diffusers that were properly seated on the bottom of Lagoons 1 and 2, and the addition of real-time DO monitoring through installation of monitoring probes. With these upgrades in place, the WWTP is expected to sustain appropriate DO levels year-round, improving lagoon treatment efficiency and settling characteristics and thereby reducing the frequency and magnitude of CBOD₅ and TSS exceedances. DO data trends and effluent results from 2026 monitoring will be used to confirm performance improvements and to support ongoing operational optimization (e.g., blower/VFD setpoints and seasonal aeration strategies).

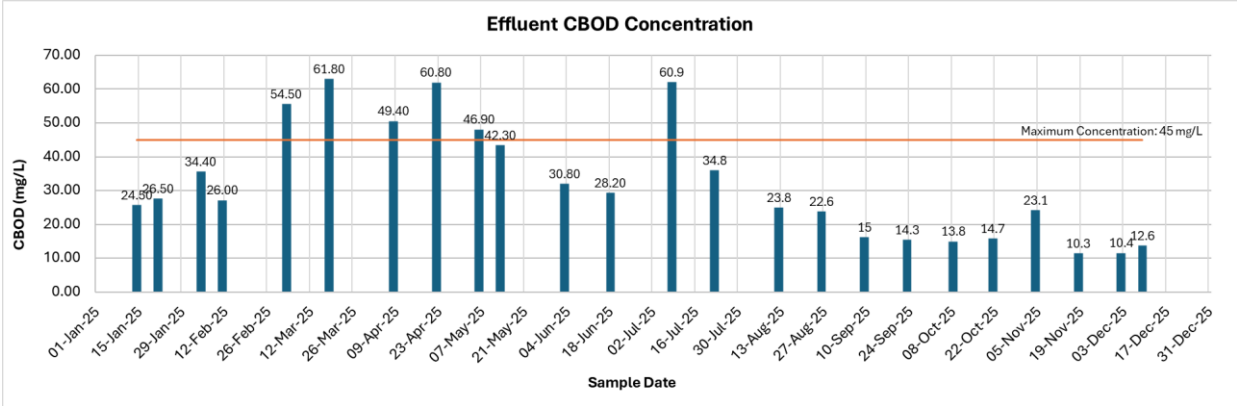


Figure 4: Plant Effluent CBOD Concentration

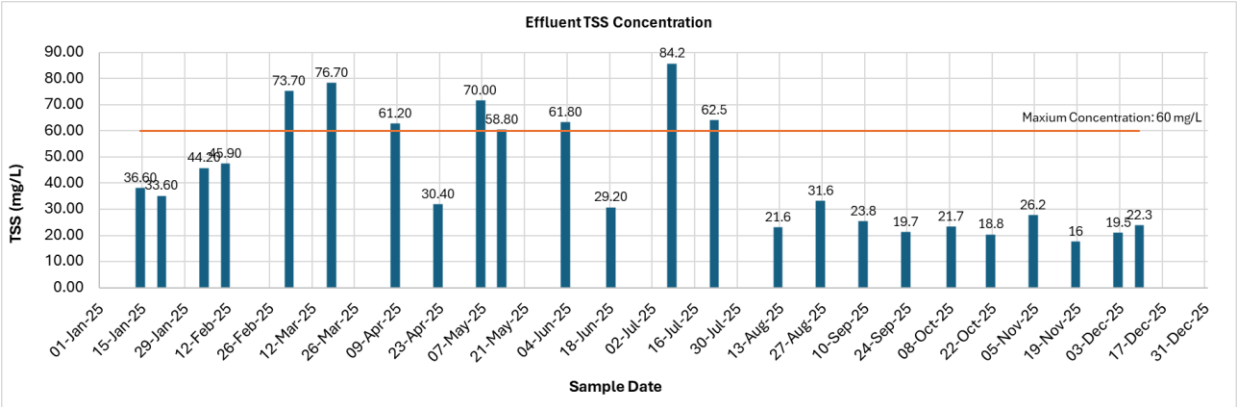


Figure 5: Plant Effluent TSS Concentration

3. RECEIVING ENVIRONMENT MONITORING

A summary of the receiving environment monitoring requirements is attached in Appendix 1. The reference Well 5 (E207272) is located up-gradient from the rapid infiltration basins, while Wells 10A (E207275), 11 (E207276), and 117 (E207278) are located down-gradient. The monitoring well locations are illustrated in Appendix 1 – Figure 2. Monitoring results were based on quarterly grab samples taken from the wells. Raw data and laboratory certification of analyses are included in Appendix 3.

3.1. Chloride and Total Sodium

The concentrations of chloride and total sodium in the groundwater wells for 2025 are illustrated on Figure 6 and Figure 7, respectively. As shown, the concentrations of both chloride and sodium were generally higher in the STP monitoring well, Wells 10A and 11 than in the reference Well 5 or in Well 117. Since chloride and sodium are both found in human wastewater streams, and the current wastewater treatment processes do not remove either to any significant extent, the data confirms that the groundwater effluent plume moves in a north-easterly direction from the RI basins (i.e., movement is away from Toby Creek – see Appendix 1 – Figure 2). No upward trend is evident for the concentration of either analyte. Well 5 was dry for three of the quarterly samples.

The B.C. Approved water quality guidelines specify a maximum chloride concentration of 250 mg/L for drinking water and 600 mg/L for the protection of freshwater aquatic life; as shown on Figure 6, the concentration of chloride in the samples taken from the monitoring wells was always well below both limits. The Working Water Quality Guidelines (WWQGs) show a limit of 150 mg/L for salinity (NaCl) for the protection of freshwater aquatic life; as shown in Figure 7, the concentration of sodium detected in the monitoring wells was below this level.

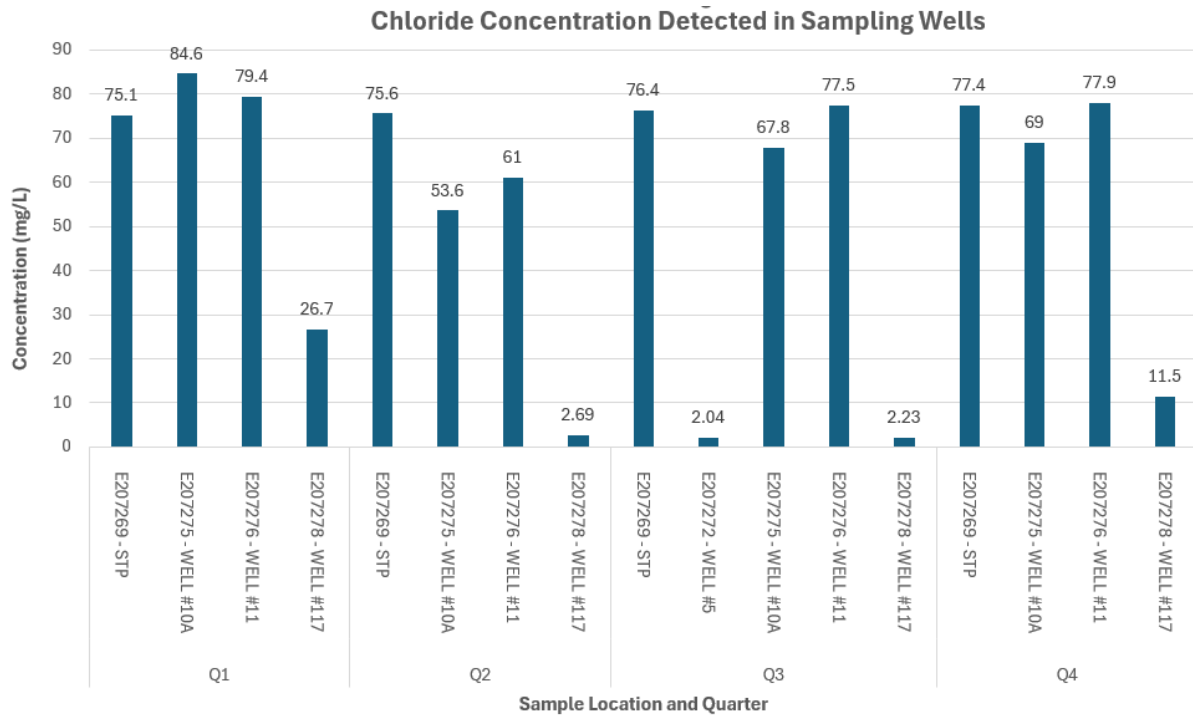


Figure 3: Sampling/Monitoring Well Chloride Concentration

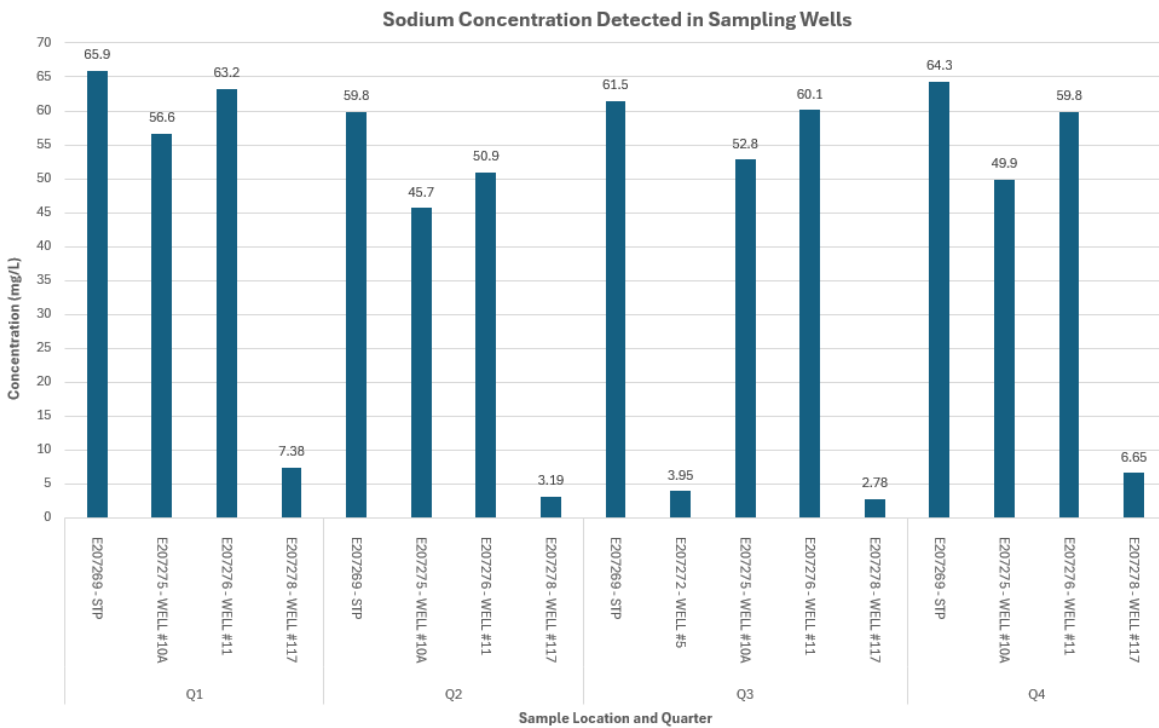


Figure 7: Sampling/Monitoring Well Sodium Concentration

3.2. Nitrogen Species

The concentration of ammonia nitrogen in the samples taken from the monitoring wells is illustrated in Figure 8. As shown, the STP well exhibited ammonia (as N) concentrations as high as 48.2 mg/L, compared to low or non-detectable concentrations in Well 5, Well 10A, Well 11, and Well 117. This again confirms that effluent plume/groundwater movement is away from Toby Creek, and fish toxicity in the Creek resulting from ammonia in the WWTP discharge is predicted to not be an issue. The B.C. Approved water quality guidelines do not contain a drinking water limit for ammonia.

Nitrate (NO_3^-) concentration (Figure 9) was highest in Well 11 (10.9 mg/L) compared to the other wells; all but 1 sample were below the B.C. Approved water quality guidelines' drinking water limit of 10 mg/L.

Nitrite (NO_2^-) concentration (Figure 10) were at or above the detection limit at all locations, except Well 117. Nitrite concentration ranged as high as about 0.0128 mg/L, in Well 11, which is well below the B.C. Approved water quality guidelines' drinking water limit of 1 mg/L. As with the other species discussed previously, aquatic toxicity for nitrite is predicted to not be an issue because groundwater movement is away from Toby Creek.

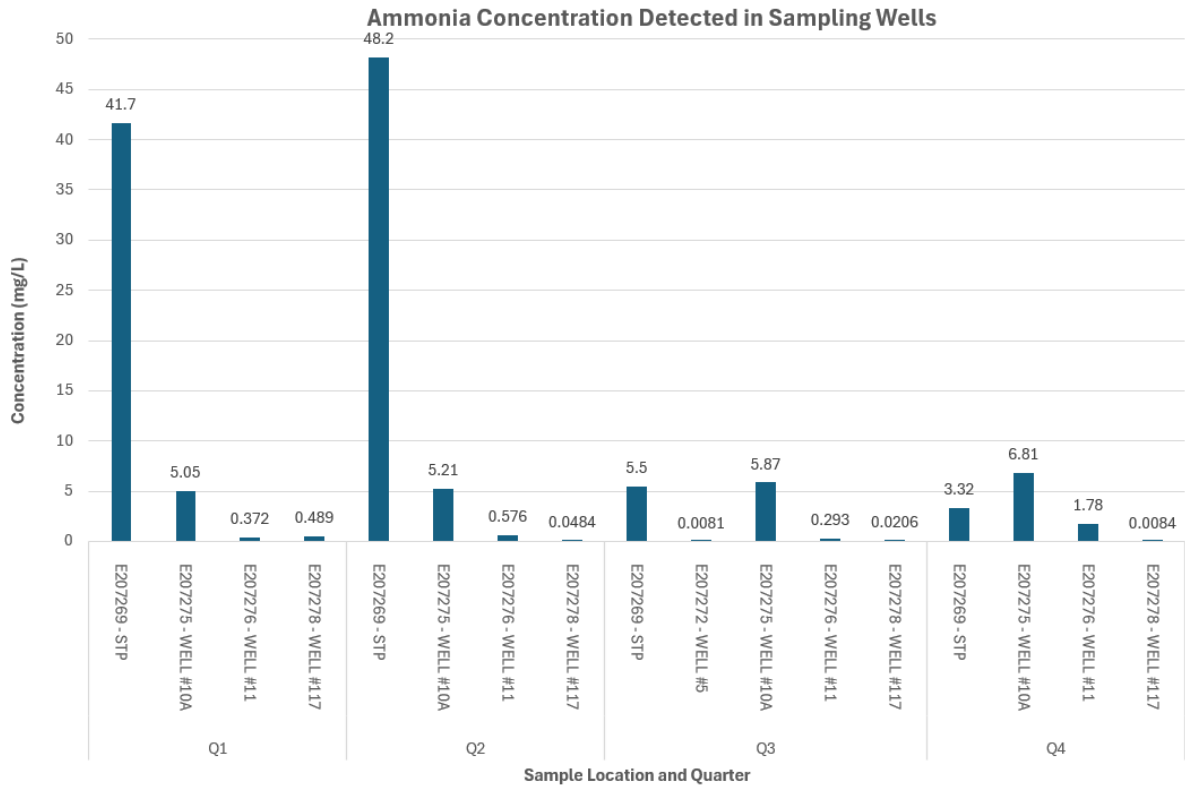


Figure 4: Sampling/Monitoring Wells Ammonia Concentration

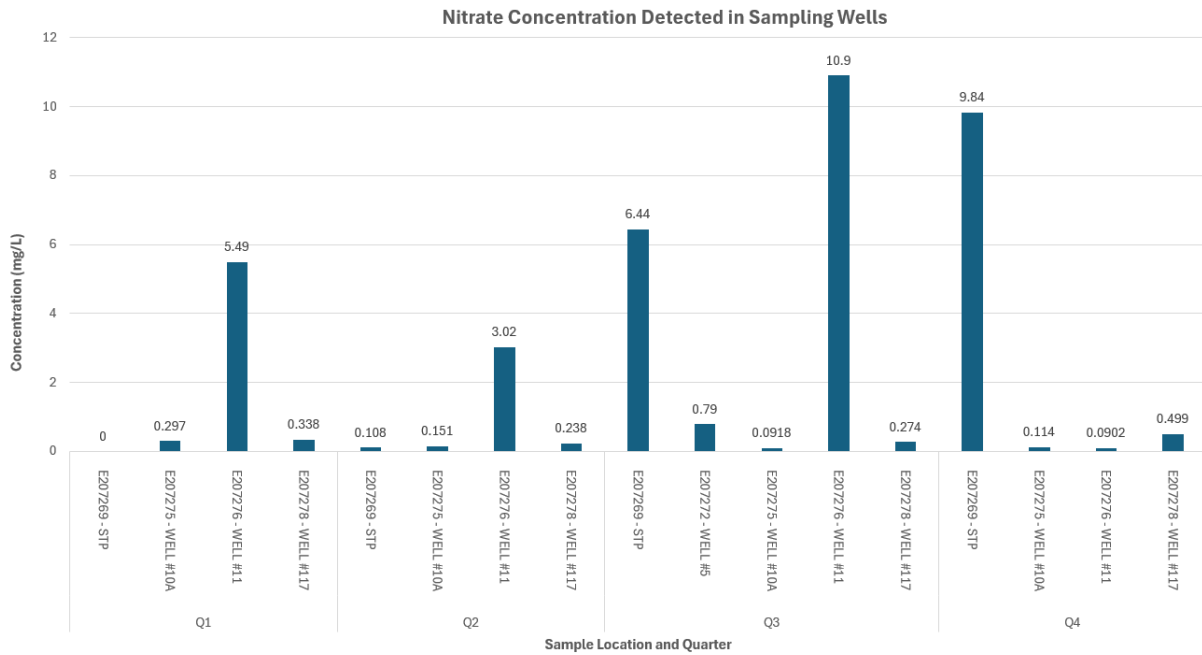


Figure 5: Sampling/Monitoring Wells Nitrate Concentration

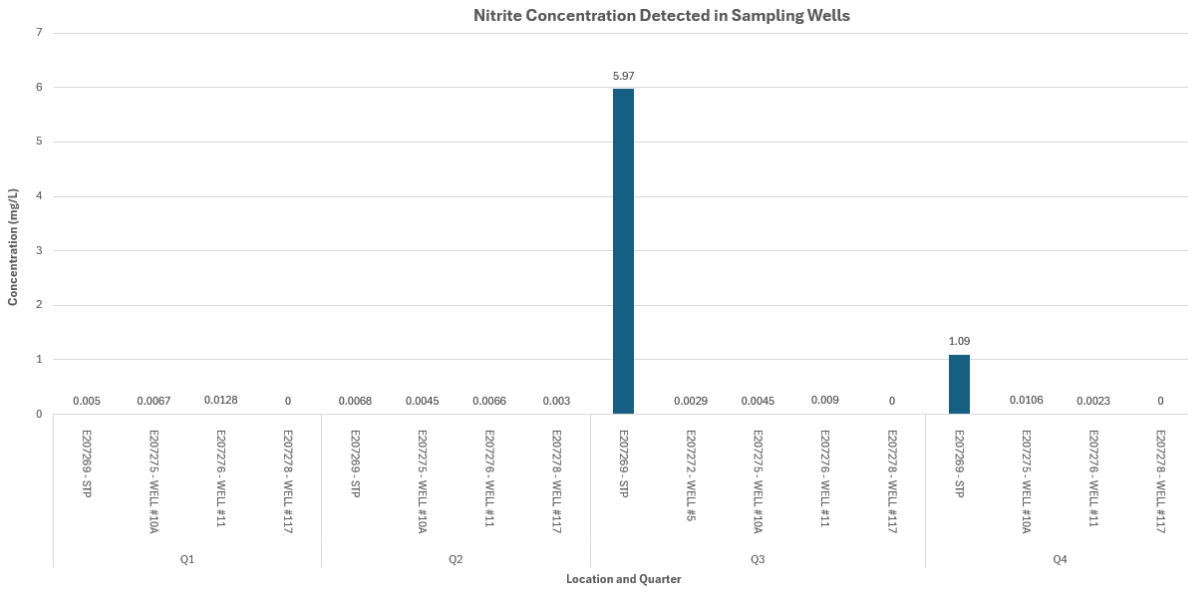


Figure 6: Sampling/Monitoring Wells Nitrite Concentration

3.3. Temperature and pH

Groundwater pH is illustrated in Figures 11 and 12. Temperature is illustrated on Figure 13.

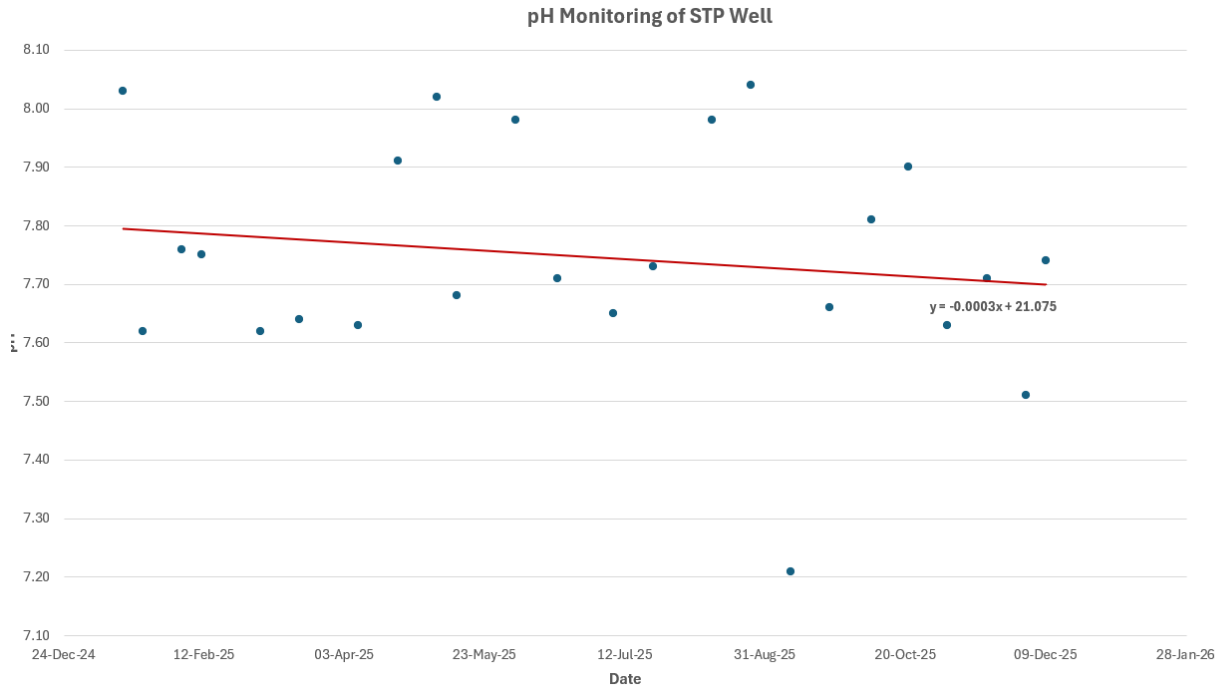


Figure 7: Sampling/Monitoring STP Well pH

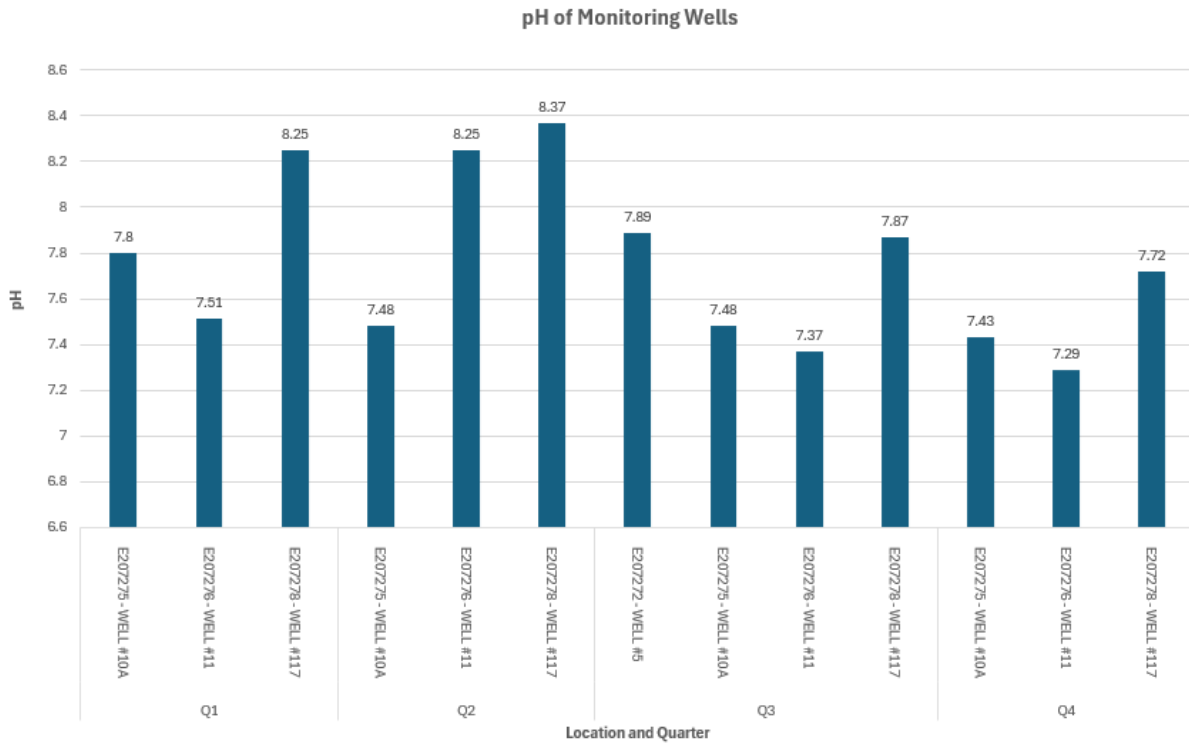


Figure 12: Sampling/Monitoring Wells pH

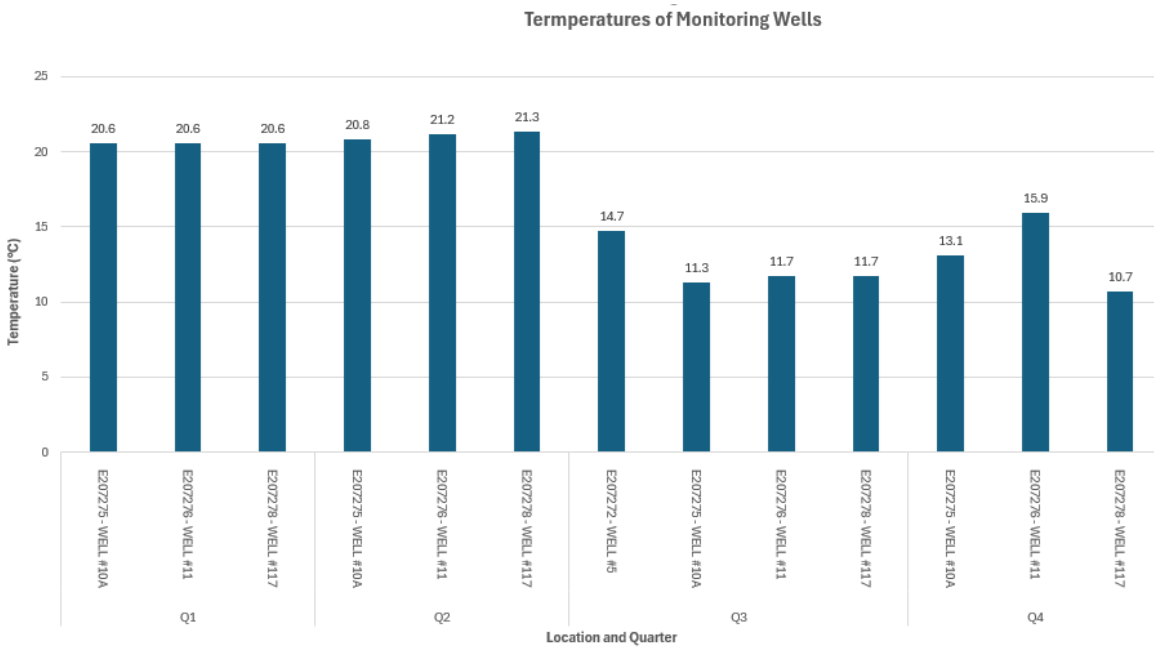


Figure 13: Sampling/Monitoring Wells Temperature

4. SUMMARY AND DISCUSSION

Analysis of the plant discharge to the rapid infiltration basins showed that six (6) of twenty-four (24) samples taken in 2025 exceeded the allowable CBOD₅ concentration of 45 mg/L. TSS sample values exceeded the allowable concentration of 60 mg/L in seven (7) samples taken in 2025, with the rest of the parameters tested for being within the specified limits.

In response to the CBOD₅ and TSS exceedances observed in 2025, the District completed aeration system upgrades intended to improve dissolved oxygen control and lagoon treatment performance. The upgrades (blower output improvements, new fine-bubble diffusers in Lagoons 1 and 2, and real-time DO monitoring) are expected to improve aerobic treatment efficiency and solids control. Monitoring results in 2026 will be reviewed to confirm that the upgrades have reduced exceedance frequency and to guide any further operational adjustments.

Analysis of the data from the groundwater monitoring wells confirmed that the effluent plume/groundwater movement is away from Toby Creek. No upward trend in the concentrations

of the parameters measured (Cl^- , Na^+ , NO_3^- , NO_2^-) was apparent. Comparison of the results to relevant B.C. Approved water quality guidelines for drinking water quality showed that the impact of effluent discharge to ground should be of low concern to surrounding water sources.



**District of Invermere
Wastewater Treatment Plant**

APPENDIX 1

**Summary of Monitoring Plan & Reporting
Requirements**

Monitoring for Plan Operation Purposes

The discharger is expected to undertake additional monitoring for plant operation purposes. The monitoring program outlined in this letter may not be adequate for plant operation purposes.

Environmental Monitoring System (EMS) Numbers

The following are the EMS site numbers assigned to the monitoring sites listed above. These numbers are to be used when entering data directly into the Ministry EMS database in accordance with Part 7, Section 28 (2) of the *Regulation*. Monitoring data shall be submitted to the Ministry data base quarterly within 30 days of the end of each quarter.

For information on the use of EMS and the electronic data transfer utility please refer to the following websites:

http://wlapwww.gov.bc.ca/epd/ems_edt.html.

<http://wlapwww.gov.bc.ca/epd/labsys/index.htm#EMS>

Name	EMS Number	Description
Invermere STP Effluent	E207269	Sample at the treatment plant prior to discharge to the infiltration basins.
Well #5	E207272	(See attached site plan Figure 2)
Well # 10A	E207275	(See attached site plan Figure 2)
Well # 11	E207276	(See attached site plan Figure 2)
Well # 117	E207278	(See attached site plan Figure 2)

GPS Coordinates

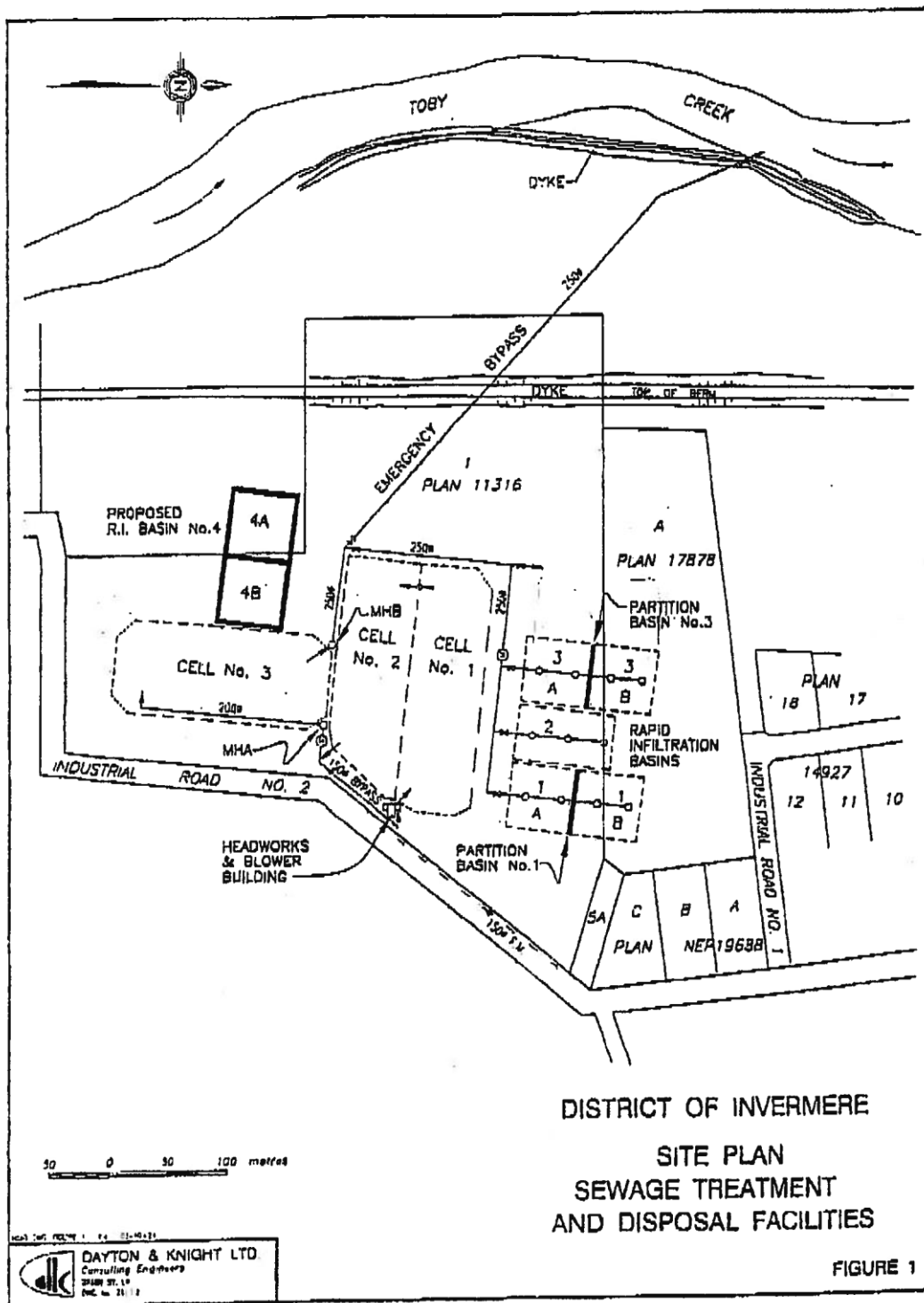
E 257175 Toby Creek, within IDZ
 E 257174 Toby Creek, downstream, near bridge
 E 257176 Toby Creek, upstream IDZ.

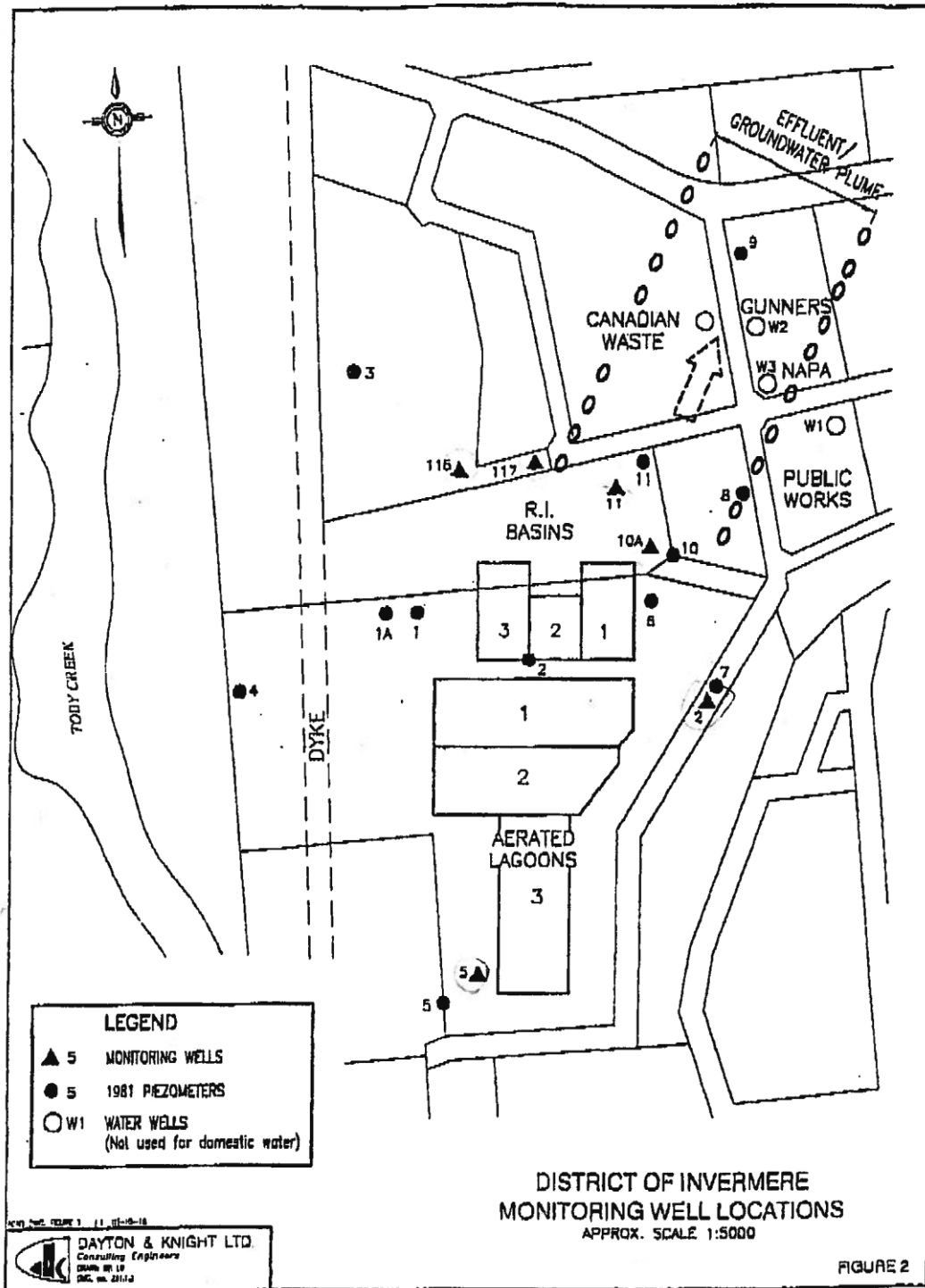
The discharger shall submit to the *Manager* the GPS coordinates for all sampling sites listed above on or before October 31, 2004.

Reporting Requirements

The discharger shall report monitoring data in accordance with Part 7, Section 28 of the *Regulation* and in accordance with the following requirements:

In accordance with Part 7, Section 28(3) of the *Regulation* the discharger shall submit an annual report and do so in accordance with the annual report requirements of Section 28 of the *Regulation*. The annual report shall be made available to the public by posting it on the internet. The first annual report is due within 120 days of the end of 2004.







**District of Invermere
Wastewater Treatment Plant**

APPENDIX 2

WWTP MWR REGISTRATION



June 7, 2004

File: RE-17577

REGISTERED MAIL

RECEIVED
JUN 11 2004

District of Invermere
914 - 8th Avenue
P.O. Box 339
INVERMERE B C V0A 1K0

DAYTON & KNIGHT LTD.

Attention: Brian Nickurak, Director of Municipal Works

Dear Sir:

Re: Registration under the *Municipal Sewage Regulation* of the discharge to the ground near Toby Creek from the Invermere sewage treatment plant located at Lot 1, Plan 11316, District Lot 375, Kootenay District and Lot A, Plan 17878, District Lot 375, Kootenay District

This is to acknowledge your registration form under the *Municipal Sewage Regulation* (the *Regulation*) dated October 21, 2003 and received at this office on October 28, 2003 for the registration of the wastewater treatment plant owned and operated by the District of Invermere and located at Invermere, British Columbia. Pursuant to Part 2, section 3 of the *Regulation*, the effective date of registration of this discharge is the date of this letter. The ministry file number for this discharge is RE-17577. Please indicate this number on all future correspondence regarding this discharge.

The initial registration fee is \$156.52. Please submit a cheque payable to the Minister of Finance for this amount within 60 days of the date of this letter. An annual registration fee will be determined according to the *Waste Management Permit Fees Regulation* and you will be receiving an annual invoice from the ministry for payment of this fee. Payment of all fees due is necessary to comply with the *Regulation*. Fees will be calculated using a maximum effluent flow of 2275 m³/day, a maximum BOD₅ of 45 mg/L and a maximum TSS of 60 mg/L.

We wish to remind you that the discharger is responsible for compliance with the requirements of the *Regulation*, the registration, the *Waste Management Act* (the *Act*) and this registration letter. Your attention is respectfully directed to the terms and conditions outlined in the *Regulation*, the registration and the *Act*. Contravention of any of the conditions of the *Regulation*, the registration and this letter is a violation of the *Act* and may result in prosecution.

... 2

Ministry of
Water, Land and Air
Protection

Environmental Protection
Kootenay and Okanagan
Regions

Mailing/Location Address:
401 - 333 Victoria Street
Nelson BC V1L 4K3

Telephone: 250 354-6355
Facsimile: 250 354-6332

We also wish to draw your attention to the Environmental Impact Study Guideline dated December 2000 and the *Regulation* Compliance Guideline dated January 2001, these policy documents are used in conjunction with the *Regulation*, the registration and the *Act*.

The *Regulation* and policy documents are available at:

<http://wlapwww.gov.bc.ca/epd/epdpa/mpp/msrhome.html>

This letter does not replace the *Act*, regulations issued under the *Act* or the *Regulation*. It does not list all provisions relating to municipal sewage discharges. If there are differences or omissions in this document then the *Act*, the regulations issued under the *Act* and the *Regulation* apply except where expressly noted in this letter.

Registration under the *Regulation* should not be construed as a representation that the authorized works are adequately designed or will satisfy the *Regulation*. It is the responsibility of the discharger to ensure that the works are adequately designed, constructed and operated and that the discharge quality complies with the *Regulation* and this letter. Registration under the *Regulation* and this letter are without prejudice to any additional works that may be required or any additional requirements that may be specified by the Regional Waste Manager (the *Manager*). The Minister may also issue Orders under the *Act*.

Registration under the *Regulation* does not authorise entry upon, crossing over, or use for any purpose of private or Crown lands or works, unless and except as authorised by the owner of such lands or works. The responsibility for obtaining such authority shall rest with the discharger. It is also the responsibility of the discharger to ensure that all activities conducted under this registration are carried out with regard to the rights of third parties and comply with other applicable legislation that may be in force. The discharger must also obtain any necessary approvals from other agencies.

Administration of the *Act*, the *Regulation*, the registration and this registration letter will be carried out by staff from our Sub-Regional Office located at #205 Industrial Road G, Cranbrook, British Columbia, V1C 7G5, (telephone: (250) 489-8540) or by staff from our Regional Office located at #401 - 333 Victoria Street, Nelson, British Columbia, V1L 4K3. Plans, data and reports pertinent to the *Regulation* registration and this letter are to be submitted to the *Manager* care of the Sub-Regional office address at Cranbrook, British Columbia in the form required by the *Regulation* or in the form required by the *Manager*. The ministry uses a reference number to track monitoring data associated with discharges. The site reference number for this discharge is E207269.

Registration Reference Documents

Acceptance of this registration under the *Regulation* is based on the following documents:

1. Registration Form dated October 21, 2003.
2. Environmental Impact Study dated October 2003 and prepared by Dayton & Knight Ltd. Consulting Engineers in association with Piteau Associates Geotechnical and Hydrogeological Consultants.

- System dated November 2001 and prepared by Piteau Associates Geotechnical and Hydrogeological Consultants for Dayton & Knight Ltd.
5. Sewage Treatment and Disposal Operating Plan dated October 2003 and prepared by Dayton & Knight Ltd. Consulting Engineers.
 6. Letter dated February 9, 2001 to the District of Invermere from the Regional Waste Manager regarding ammonia.

Treatment Plant Works

The existing treatment plant works are three aerated lagoons with subsurface aeration, influent and effluent flow meters, three infiltration basins (i.e. numbers 1, 2 and 3) and an emergency outfall discharging to Toby Creek and related appurtenances. The upgraded treatment plant will include an improved head works building with mechanical screen and influent flow meter, an upgraded blower building with a stand by generator, raising the berm on treatment aeration cell number 1, a new liner in aeration cell number 2, improved aeration in treatment lagoon number 3, new transfer piping for improved hydraulics between the lagoons and between the lagoons and the infiltration basins, raising and partitioning infiltration basins number 1 and 3 to form infiltration basins number 1A, 1B, 3A and 3B, construction of infiltration basins numbers 4A and 4B, an effluent flow meter, the existing outfall to Toby Creek for emergency use only and related appurtenances approximately as shown on the attached Site Plan marked Figure 1. The upgraded treatment plant shall be complete on or before March 31, 2005. The plant maximum daily flow and discharge to ground is 2275 m³/day. The effluent quality shall be BOD₅ of 45 mg/L and TSS of 60 mg/L. Other effluent quality requirements are to be in accordance with the *Regulation*.

Use of Emergency Outfall to Toby Creek

The use of the emergency outfall to Toby Creek is prohibited unless approved by the Manager and confirmed in writing. Additional monitoring may be required when discharging effluent via the emergency outfall.

Biosolids (Sludge) Disposal

Biosolids (sludge) and screenings from the treatment plant must be disposed in accordance with an authorization issued under the *Act* or the Organic Matter Recycling Regulation or as approved in writing by the Regional Manager.

Semi-solid Waste

The discharger shall not accept semi-solid wastes at the treatment plant unless approved by the Manager. Semi-solid wastes mean septic tank pumpage, holding tank solids or sludge from sewage facilities.

Plant Design

The treatment plant design must be in accordance with Schedule 7 of the *Regulation* and meet reliability Category II.

Additional Works

The works are to be designed to allow for additional facilities in future to reduce effluent ammonia levels if necessary to protect the environment.

Operating Plan

The operating plan dated October 2003 is acceptable provided the discharger makes provision to review and improve the operating plan in accordance with the operating plan guidance document. The operating plan guidance document is available at:

http://wlapwww.gov.bc.ca/epd/epdpa/mpp/guidance_3.htm

The discharger shall also append to the operating plan the following documents:

1. this registration letter.
2. the Operating Plan Guidance document.
3. the Municipal Sewage Regulation
4. the Municipal Sewage Regulation Compliance Guideline
5. the Environmental Impact Studies prepared by Dayton & Knight Ltd.
6. the Environmental Data Quality Assurance Regulation
7. the Spill Reporting Regulation
8. the Environmental Operators Certification Program Guide
9. the flow meter calibration frequency and procedure.

Operator Qualifications and Certification

The discharger shall ensure that the treatment plant is classified and the treatment plant operators certified in accordance with Part 6, Section 22 of the *Regulation*.

Monitoring

The discharger shall undertake monitoring in accordance with Part 7 and applicable conditions of Schedule 6 of the *Regulation* subject to the requirements as follows:

Sampling and Analysis

Sampling and analysis shall be in accordance with Part 7, Section 25 of the *Regulation*.

Please note the requirement to submit data in accordance with the *Environmental Data Quality Assurance Regulation* as per Section 25 (3) of the *Regulation*.

Discharge Monitoring and Groundwater Monitoring

In accordance with Part 7, Section 26 and 27 of the *Regulation* the discharger shall undertake the following monitoring program:

Sampling Location Frequency/Type

	Plant Effluent³	Well #5	Well # 10A	Well #11	Well # 117
Parameter					
pH (field test)	M/I	Q/I	Q/I	Q/I	Q/I
temperature (field test)	M/I	Q/I	Q/I	Q/I	Q/I
flow	D/CON.				
BOD ₅ ¹	M/G				
TOC ²	QY/G				
TSS ³	M/G				
ammonia (as nitrogen)	Q/G	Q/G/P	Q/G/P	Q/G/P	Q/G/P
nitrate (as nitrogen)	Q/G	Q/G/P	Q/G/P	Q/G/P	Q/G/P
nitrite (as nitrogen)	Q/G	Q/G/P	Q/G/P	Q/G/P	Q/G/P
sodium	Q/G	Q/G/P	Q/G/P	Q/G/P	Q/G/P
chloride	Q/G	Q/G/P	Q/G/P	Q/G/P	Q/G/P

1. BOD₅ - means the 5-day biochemical oxygen demand.
2. TOC - means total organic carbon
3. TSS - means total suspended solids or non-filterable residue.

Sampling Frequency:

- D - means daily.
- M - means monthly.
- Q - means quarterly
- QY - means quarterly for one year

Sample Type:

G - means grab sample.

CON. - means continuous using a data logger. (Note: Flow meters shall be calibrated. The flow meter calibration frequency and procedures shall be contained in the operating plan.)

I - means field insitu test.

P - means the water in the well has been purged prior to obtaining the grab sample.

Monitoring for Plan Operation Purposes

The discharger is expected to undertake additional monitoring for plant operation purposes. The monitoring program outlined in this letter may not be adequate for plant operation purposes.

Environmental Monitoring System (EMS) Numbers

The following are the EMS site numbers assigned to the monitoring sites listed above. These numbers are to be used when entering data directly into the Ministry EMS database in accordance with Part 7, Section 28 (2) of the *Regulation*. Monitoring data shall be submitted to the Ministry data base quarterly within 30 days of the end of each quarter.

For information on the use of EMS and the electronic data transfer utility please refer to the following websites:

http://wlapwww.gov.bc.ca/epd/ems_edt.html.

<http://wlapwww.gov.bc.ca/epd/labsys/index.htm#EMS>

Name	EMS Number	Description
Invermere STP Effluent	E207269	Sample at the treatment plant prior to discharge to the infiltration basins.
Well #5	E207272	(See attached site plan Figure 2)
Well # 10A	E207275	(See attached site plan Figure 2)
Well # 11	E207276	(See attached site plan Figure 2)
Well # 117	E207278	(See attached site plan Figure 2)

GPS Coordinates

The discharger shall submit to the *Manager* the GPS coordinates for all sampling sites listed above on or before October 31, 2004.

Reporting Requirements

The discharger shall report monitoring data in accordance with Part 7, Section 28 of the *Regulation* and in accordance with the following requirements:

In accordance with Part 7, Section 28(3) of the *Regulation* the discharger shall submit an annual report and do so in accordance with the annual report requirements of Section 28 of the *Regulation*. The annual report shall be made available to the public by posting it on the internet. The first annual report is due within 120 days of the end of 2004.

Monitoring Program Changes

The *Manager* may modify the monitoring program from time to time. The annual report shall contain recommendations regarding changes (additions/deletions/modifications) to the monitoring program.

If you have any questions concerning this registration, please contact our Cranbrook Sub-Regional Office at (250) 489-8540.

Yours truly,

A handwritten signature in black ink, appearing to read "R.W. Baker". The signature is fluid and cursive, with the first letters of each name being capitalized and prominent.

R.W. Baker, P.Eng.
Assistant Regional Waste Manager

cc: Brian Walker, P.Eng, Dayton and Knight Ltd.
Dan Flegel, MWLAP, Cranbrook
Manager, Pollution and Assessment Division, Environment Canada
224 West Esplanade, North Vancouver, B.C. V7M 3H7



**District of Invermere
Wastewater Treatment Plant**

APPENDIX 3

Raw Data & Lab Certification of Analysis Reports



CERTIFICATE OF ANALYSIS

<p>Work Order : CG2500462</p> <p>Client : District of Invermere</p> <p>Contact : N Smith</p> <p>Address : 1101 Industrial Rd #1 Invermere BC Canada V0A 1K0</p> <p>Telephone : ---</p> <p>Project :</p> <p>PO : ---</p> <p>C-O-C number : ---</p> <p>Sampler : CORY BREW</p> <p>Site : ---</p> <p>Quote number : CG2022INVR1000001</p> <p>No. of samples received : 4</p> <p>No. of samples analysed : 4</p>	<p>Page : 1 of 4</p> <p>Laboratory : ALS Environmental - Calgary</p> <p>Account Manager : Patryk Wojciak</p> <p>Address : 2559 29th Street NE Calgary AB Canada T1Y 7B5</p> <p>Telephone : +1 403 407 1800</p> <p>Date Samples Received : 15-Jan-2025 08:10</p> <p>Date Analysis : 15-Jan-2025</p> <p>Commenced :</p> <p>Issue Date : 21-Jan-2025 12:35</p>
---	--

This report supersedes any previous report(s) with this reference. Results apply to the sample(s) as submitted. This document shall not be reproduced, except in full.

This Certificate of Analysis contains the following information:

- General Comments
- Analytical Results

Additional information pertinent to this report will be found in the following separate attachments: Quality Control Report, QC Interpretive report to assist with Quality Review and Sample Receipt Notification (SRN).

Signatories

This document has been electronically signed by the authorized signatories below. Electronic signing is conducted in accordance with US FDA 21 CFR Part 11.

<i>Signatories</i>	<i>Position</i>	<i>Laboratory Department</i>
Catherine Fong	Lab Analyst	Inorganics, Calgary, Alberta
Hannah Phung	Lab Assistant	Inorganics, Calgary, Alberta
Harpreet Chawla	Team Leader - Inorganics	Inorganics, Calgary, Alberta
Harpreet Chawla	Team Leader - Inorganics	Metals, Calgary, Alberta
Katarzyna Glinka	Analyst	Inorganics, Calgary, Alberta
Shirley Li	Team Leader - Inorganics	Inorganics, Calgary, Alberta



General Comments

The analytical methods used by ALS are developed using internationally recognized reference methods (where available), such as those published by US EPA, APHA Standard Methods, ASTM, ISO, Environment Canada, BC MOE, and Ontario MOE. Refer to the ALS Quality Control Interpretive report (QCI) for applicable references and methodology summaries. Reference methods may incorporate modifications to improve performance.

Where a reported less than (<) result is higher than the LOR, this may be due to primary sample extract/digestate dilution and/or insufficient sample for analysis.

Where the LOR of a reported result differs from standard LOR, this may be due to high moisture content, insufficient sample (reduced weight employed) or matrix interference.

Please refer to Quality Control Interpretive report (QCI) for information regarding Holding Time compliance.

Key : CAS Number: Chemical Abstracts Services number is a unique identifier assigned to discrete substances
LOR: Limit of Reporting (detection limit).
Measurement Uncertainty: The reported uncertainties in this report are expanded uncertainties calculated using a coverage factor of 2, which gives a level of confidence of approximately 95%.
Surrogate: An analyte that is similar in behavior to target analyte(s), but that does not occur naturally in environmental samples. For applicable tests, surrogates are added to samples prior to analysis as a check on recovery.

<i>Unit</i>	<i>Description</i>
°C	degrees celsius
mg/L	milligrams per litre
pH units	pH units

>: greater than.

<: less than.

Test results reported relate only to the samples as received by the laboratory.

UNLESS OTHERWISE STATED on SRN or QCI Report, ALL SAMPLES WERE RECEIVED IN ACCEPTABLE CONDITION.

Qualifiers

<i>Qualifier</i>	<i>Description</i>
DLDS	<i>Detection Limit Raised: Dilution required due to high Dissolved Solids / Electrical Conductivity.</i>
LPMB	<i>Lab-Preserved for Total Metals. Sample received with pH > 2 and preserved at the lab. Total Metals results may be biased low.</i>



Analytical Results

CG2500462-001
 Sub-Matrix:Wastewater
 (Matrix: Water)

Client sample ID: E207269 STP - TEMP 6.8°C, PH 7.75
 Client sampling date / time: 14-Jan-2025 14:30

Analyte	CAS Number	Result	LOR	Unit	Method/Lab	Prep Date	Analysis Date	QCLot
Physical Tests								
pH	---	8.03	0.10	pH units	E108/CG	15-Jan-2025	15-Jan-2025	1840334
Solids, total suspended [TSS]	---	36.6	1.0	mg/L	E160-L/CG	-	17-Jan-2025	1842955
Temperature, sample	---	20.6	0.10	°C	E218/CG	-	16-Jan-2025	-
Anions and Nutrients								
Ammonia, total (as N)	7664-41-7	41.7	5.00	mg/L	E298/CG	15-Jan-2025	16-Jan-2025	1840232
Chloride	16887-00-6	75.1	0.50	mg/L	E235.Cl-L/CG	15-Jan-2025	15-Jan-2025	1840741
Nitrate (as N)	14797-55-8	<0.0250 ^{DLDB}	0.0250	mg/L	E235.NO3-L/CG	15-Jan-2025	15-Jan-2025	1840743
Nitrite (as N)	14797-65-0	0.0050	0.0050	mg/L	E235.NO2-L/CG	15-Jan-2025	15-Jan-2025	1840742
Phosphorus, total	7723-14-0	7.03	0.200	mg/L	E372-U/CG	20-Jan-2025	20-Jan-2025	1844184
Total Metals								
Sodium, total	7440-23-5	65.9 ^{LPHB}	0.050	mg/L	E420/CG	16-Jan-2025	16-Jan-2025	1840439
Aggregate Organics								
Carbonaceous biochemical oxygen demand [CBOD]	---	24.5	6.0	mg/L	E555/CG	-	15-Jan-2025	1840710

Please refer to the General Comments section for an explanation of any result qualifiers detected.

Analytical Results

CG2500462-002
 Sub-Matrix:Wastewater
 (Matrix: Water)

Client sample ID: E207275 - WELL #10A - TEMP 9.8°C, PH 7.63 ELEV 13.35'
 Client sampling date / time: 14-Jan-2025 15:25

Analyte	CAS Number	Result	LOR	Unit	Method/Lab	Prep Date	Analysis Date	QCLot
Physical Tests								
pH	---	7.80	0.10	pH units	E108/CG	15-Jan-2025	15-Jan-2025	1840334
Temperature, sample	---	20.6	0.10	°C	E218/CG	-	16-Jan-2025	-
Anions and Nutrients								
Ammonia, total (as N)	7664-41-7	5.05	5.00	mg/L	E298/CG	15-Jan-2025	16-Jan-2025	1840232
Chloride	16887-00-6	84.6	0.50	mg/L	E235.Cl-L/CG	15-Jan-2025	15-Jan-2025	1840741
Nitrate (as N)	14797-55-8	0.297	0.0250	mg/L	E235.NO3-L/CG	15-Jan-2025	15-Jan-2025	1840743
Nitrite (as N)	14797-65-0	0.0067	0.0050	mg/L	E235.NO2-L/CG	15-Jan-2025	15-Jan-2025	1840742
Total Metals								
Sodium, total	7440-23-5	56.6	0.050	mg/L	E420/CG	16-Jan-2025	16-Jan-2025	1840439

Please refer to the General Comments section for an explanation of any result qualifiers detected.

Analytical Results

CG2500462-003
 Sub-Matrix:Wastewater
 (Matrix: Water)

Client sample ID: E207276 - WELL #11 - TEMP 9.7°C, PH 7.22 ELEV 15.45'
 Client sampling date / time: 14-Jan-2025 15:10

Analyte	CAS Number	Result	LOR	Unit	Method/Lab	Prep Date	Analysis Date	QCLot
Physical Tests								
pH	---	7.51	0.10	pH units	E108/CG	15-Jan-2025	15-Jan-2025	1840334
Temperature, sample	---	20.6	0.10	°C	E218/CG	-	16-Jan-2025	-



Analytical Results

CG2500462-003

Sub-Matrix:Wastewater

(Matrix: Water)

Client sample ID: E207276 - WELL #11 - TEMP 9.7°C, PH 7.22 ELEV 15.45'

Client sampling date / time: 14-Jan-2025 15:10

Analyte	CAS Number	Result	LOR	Unit	Method/Lab	Prep Date	Analysis Date	QCLot
Anions and Nutrients								
Ammonia, total (as N)	7664-41-7	0.372	0.0050	mg/L	E298/CG	15-Jan-2025	15-Jan-2025	1840232
Chloride	16887-00-6	79.4	0.50	mg/L	E235.Cl-L/CG	15-Jan-2025	15-Jan-2025	1840741
Nitrate (as N)	14797-55-8	5.49	0.0250	mg/L	E235.NO3-L/CG	15-Jan-2025	15-Jan-2025	1840743
Nitrite (as N)	14797-65-0	0.0128	0.0050	mg/L	E235.NO2-L/CG	15-Jan-2025	15-Jan-2025	1840742
Total Metals								
Sodium, total	7440-23-5	63.2	0.050	mg/L	E420/CG	16-Jan-2025	16-Jan-2025	1840439

Please refer to the General Comments section for an explanation of any result qualifiers detected.

Analytical Results

CG2500462-004

Sub-Matrix:Wastewater

(Matrix: Water)

Client sample ID: E207278 - WELL #117 - TEMP 8.8°C, PH 8.46 ELEV 11.45'

Client sampling date / time: 14-Jan-2025 15:00

Analyte	CAS Number	Result	LOR	Unit	Method/Lab	Prep Date	Analysis Date	QCLot
Physical Tests								
pH	---	8.25	0.10	pH units	E108/CG	15-Jan-2025	15-Jan-2025	1840334
Temperature, sample	---	20.6	0.10	°C	E218/CG	-	16-Jan-2025	-
Anions and Nutrients								
Ammonia, total (as N)	7664-41-7	0.489	0.0050	mg/L	E298/CG	15-Jan-2025	15-Jan-2025	1840232
Chloride	16887-00-6	26.7	0.10	mg/L	E235.Cl-L/CG	15-Jan-2025	15-Jan-2025	1840741
Nitrate (as N)	14797-55-8	0.338	0.0050	mg/L	E235.NO3-L/CG	15-Jan-2025	15-Jan-2025	1840743
Nitrite (as N)	14797-65-0	<0.0010	0.0010	mg/L	E235.NO2-L/CG	15-Jan-2025	15-Jan-2025	1840742
Total Metals								
Sodium, total	7440-23-5	7.38	0.050	mg/L	E420/CG	16-Jan-2025	16-Jan-2025	1840439

Please refer to the General Comments section for an explanation of any result qualifiers detected.



CERTIFICATE OF ANALYSIS

<p>Work Order : CG2500777</p> <p>Client : District of Invermere</p> <p>Contact : Doug Hagen</p> <p>Address : 1101 Industrial Rd #1 Invermere BC Canada V0A 1K0</p> <p>Telephone : ---</p> <p>Project :</p> <p>PO : ---</p> <p>C-O-C number : ---</p> <p>Sampler : CB</p> <p>Site : ---</p> <p>Quote number : CG2022INVR1000001</p> <p>No. of samples received : 1</p> <p>No. of samples analysed : 1</p>	<p>Page : 1 of 2</p> <p>Laboratory : ALS Environmental - Calgary</p> <p>Account Manager : Patryk Wojciak</p> <p>Address : 2559 29th Street NE Calgary AB Canada T1Y 7B5</p> <p>Telephone : +1 403 407 1800</p> <p>Date Samples Received : 22-Jan-2025 08:00</p> <p>Date Analysis : 22-Jan-2025</p> <p>Commenced :</p> <p>Issue Date : 27-Jan-2025 14:57</p>
--	---

This report supersedes any previous report(s) with this reference. Results apply to the sample(s) as submitted. This document shall not be reproduced, except in full.

This Certificate of Analysis contains the following information:

- General Comments
- Analytical Results

Additional information pertinent to this report will be found in the following separate attachments: Quality Control Report, QC Interpretive report to assist with Quality Review and Sample Receipt Notification (SRN).

Signatories

This document has been electronically signed by the authorized signatories below. Electronic signing is conducted in accordance with US FDA 21 CFR Part 11.

<i>Signatories</i>	<i>Position</i>	<i>Laboratory Department</i>
Anthony Calero	Supervisor - Inorganic	Inorganics, Calgary, Alberta
Catherine Fong	Lab Analyst	Inorganics, Calgary, Alberta
Hannah Phung	Lab Assistant	Inorganics, Calgary, Alberta
Patryk Wojciak	Account Manager	Inorganics, Calgary, Alberta



CERTIFICATE OF ANALYSIS

<p>Work Order : CG2501314</p> <p>Client : District of Invermere</p> <p>Contact : Doug Hagen</p> <p>Address : 1101 Industrial Rd #1 Invermere BC Canada V0A 1K0</p> <p>Telephone : ---</p> <p>Project :</p> <p>PO : ---</p> <p>C-O-C number : ---</p> <p>Sampler : Cory Breav</p> <p>Site : ---</p> <p>Quote number : CG2022INVR1000001</p> <p>No. of samples received : 1</p> <p>No. of samples analysed : 1</p>	<p>Page : 1 of 2</p> <p>Laboratory : ALS Environmental - Calgary</p> <p>Account Manager : Patryk Wojciak</p> <p>Address : 2559 29th Street NE Calgary AB Canada T1Y 7B5</p> <p>Telephone : +1 403 407 1800</p> <p>Date Samples Received : 05-Feb-2025 10:40</p> <p>Date Analysis : 05-Feb-2025</p> <p>Commenced</p> <p>Issue Date : 10-Feb-2025 17:30</p>
--	---

This report supersedes any previous report(s) with this reference. Results apply to the sample(s) as submitted. This document shall not be reproduced, except in full.

This Certificate of Analysis contains the following information:

- General Comments
- Analytical Results

Additional information pertinent to this report will be found in the following separate attachments: Quality Control Report, QC Interpretive report to assist with Quality Review and Sample Receipt Notification (SRN).

Signatories

This document has been electronically signed by the authorized signatories below. Electronic signing is conducted in accordance with US FDA 21 CFR Part 11.

<i>Signatories</i>	<i>Position</i>	<i>Laboratory Department</i>
Catherine Fong	Lab Analyst	Inorganics, Calgary, Alberta
Hannah Phung	Lab Assistant	Inorganics, Calgary, Alberta
Patryk Wojciak	Account Manager	Inorganics, Calgary, Alberta
Shirley Li	Team Leader - Inorganics	Inorganics, Calgary, Alberta



CERTIFICATE OF ANALYSIS

<p>Work Order : CG2501603</p> <p>Client : District of Invermere</p> <p>Contact : Sewer</p> <p>Address : 1101 Industrial Rd #1 Invermere BC Canada V0A 1K0</p> <p>Telephone : 250-342-5234</p> <p>Project :</p> <p>PO : ---</p> <p>C-O-C number : ---</p> <p>Sampler : Cory Breau</p> <p>Site : District of Invermere</p> <p>Quote number : CG2022INVR1000001</p> <p>No. of samples received : 1</p> <p>No. of samples analysed : 1</p>	<p>Page : 1 of 2</p> <p>Laboratory : ALS Environmental - Calgary</p> <p>Account Manager : Patryk Wojciak</p> <p>Address : 2559 29th Street NE Calgary AB Canada T1Y 7B5</p> <p>Telephone : +1 403 407 1800</p> <p>Date Samples Received : 13-Feb-2025 06:47</p> <p>Date Analysis : 13-Feb-2025</p> <p>Commenced</p> <p>Issue Date : 24-Feb-2025 15:45</p>
--	---

This report supersedes any previous report(s) with this reference. Results apply to the sample(s) as submitted. This document shall not be reproduced, except in full.

This Certificate of Analysis contains the following information:

- General Comments
- Analytical Results

Additional information pertinent to this report will be found in the following separate attachments: Quality Control Report, QC Interpretive report to assist with Quality Review and Sample Receipt Notification (SRN).

Signatories

This document has been electronically signed by the authorized signatories below. Electronic signing is conducted in accordance with US FDA 21 CFR Part 11.

<i>Signatories</i>	<i>Position</i>	<i>Laboratory Department</i>
Anthony Calero	Supervisor - Inorganic	Inorganics, Calgary, Alberta
Catherine Fong	Lab Analyst	Inorganics, Calgary, Alberta
Hannah Phung	Lab Assistant	Inorganics, Calgary, Alberta
Patryk Wojciak	Account Manager	Inorganics, Calgary, Alberta
Shirley Li	Team Leader - Inorganics	Inorganics, Calgary, Alberta



CERTIFICATE OF ANALYSIS

<p>Work Order : CG2502495</p> <p>Client : District of Invermere</p> <p>Contact : Doug Hagen</p> <p>Address : 1101 Industrial Rd #1 Invermere BC Canada V0A 1K0</p> <p>Telephone : ---</p> <p>Project :</p> <p>PO : ---</p> <p>C-O-C number : ---</p> <p>Sampler : CORY BREW</p> <p>Site : District of Invermere</p> <p>Quote number : CG2022INVR1000001</p> <p>No. of samples received : 1</p> <p>No. of samples analysed : 1</p>	<p>Page : 1 of 2</p> <p>Laboratory : ALS Environmental - Calgary</p> <p>Account Manager : Patryk Wojciak</p> <p>Address : 2559 29th Street NE Calgary AB Canada T1Y 7B5</p> <p>Telephone : +1 403 407 1800</p> <p>Date Samples Received : 05-Mar-2025 08:05</p> <p>Date Analysis : 05-Mar-2025</p> <p>Commenced</p> <p>Issue Date : 11-Mar-2025 14:42</p>
--	---

This report supersedes any previous report(s) with this reference. Results apply to the sample(s) as submitted. This document shall not be reproduced, except in full.

This Certificate of Analysis contains the following information:

- General Comments
- Analytical Results

Additional information pertinent to this report will be found in the following separate attachments: Quality Control Report, QC Interpretive report to assist with Quality Review and Sample Receipt Notification (SRN).

Signatories

This document has been electronically signed by the authorized signatories below. Electronic signing is conducted in accordance with US FDA 21 CFR Part 11.

<i>Signatories</i>	<i>Position</i>	<i>Laboratory Department</i>
Anthony Calero	Supervisor - Inorganic	Inorganics, Calgary, Alberta
Catherine Fong	Lab Analyst	Inorganics, Calgary, Alberta
Hannah Phung	Lab Assistant	Inorganics, Calgary, Alberta
Patryk Wojciak	Account Manager	Inorganics, Calgary, Alberta



CERTIFICATE OF ANALYSIS

<p>Work Order : CG2503111</p> <p>Client : District of Invermere</p> <p>Contact : Doug Hagen</p> <p>Address : 1101 Industrial Rd #1 Invermere BC Canada V0A 1K0</p> <p>Telephone : ---</p> <p>Project : ---</p> <p>PO : ---</p> <p>C-O-C number : ---</p> <p>Sampler : CORY BREAU</p> <p>Site : ---</p> <p>Quote number : CG2022INVR1000001</p> <p>No. of samples received : 1</p> <p>No. of samples analysed : 1</p>	<p>Page : 1 of 2</p> <p>Laboratory : ALS Environmental - Calgary</p> <p>Account Manager : Patryk Wojciak</p> <p>Address : 2559 29th Street NE Calgary AB Canada T1Y 7B5</p> <p>Telephone : +1 403 407 1800</p> <p>Date Samples Received : 19-Mar-2025 08:10</p> <p>Date Analysis : 19-Mar-2025</p> <p>Commenced</p> <p>Issue Date : 25-Mar-2025 16:16</p>
--	---

This report supersedes any previous report(s) with this reference. Results apply to the sample(s) as submitted. This document shall not be reproduced, except in full.

This Certificate of Analysis contains the following information:

- General Comments
- Analytical Results

Additional information pertinent to this report will be found in the following separate attachments: Quality Control Report, QC Interpretive report to assist with Quality Review and Sample Receipt Notification (SRN).

Signatories

This document has been electronically signed by the authorized signatories below. Electronic signing is conducted in accordance with US FDA 21 CFR Part 11.

<i>Signatories</i>	<i>Position</i>	<i>Laboratory Department</i>
Anthony Calero	Supervisor - Inorganic	Inorganics, Calgary, Alberta
Hannah Phung	Lab Assistant	Inorganics, Calgary, Alberta
Harpreet Chawla	Team Leader - Inorganics	Inorganics, Calgary, Alberta
Patryk Wojciak	Account Manager	Inorganics, Calgary, Alberta



CERTIFICATE OF ANALYSIS

<p>Work Order : CG2504173</p> <p>Client : District of Invermere</p> <p>Contact : Doug Hagen</p> <p>Address : 1101 Industrial Rd #1 Invermere BC Canada V0A 1K0</p> <p>Telephone : ---</p> <p>Project :</p> <p>PO : ---</p> <p>C-O-C number : ---</p> <p>Sampler : Scott Travis</p> <p>Site : District of Invermere</p> <p>Quote number : CG2022INVR1000001</p> <p>No. of samples received : 1</p> <p>No. of samples analysed : 1</p>	<p>Page : 1 of 2</p> <p>Laboratory : ALS Environmental - Calgary</p> <p>Account Manager : Patryk Wojciak</p> <p>Address : 2559 29th Street NE Calgary AB Canada T1Y 7B5</p> <p>Telephone : +1 403 407 1800</p> <p>Date Samples Received : 09-Apr-2025 08:10</p> <p>Date Analysis : 09-Apr-2025</p> <p>Commenced</p> <p>Issue Date : 16-Apr-2025 10:02</p>
---	---

This report supersedes any previous report(s) with this reference. Results apply to the sample(s) as submitted. This document shall not be reproduced, except in full.

This Certificate of Analysis contains the following information:

- General Comments
- Analytical Results

Additional information pertinent to this report will be found in the following separate attachments: Quality Control Report, QC Interpretive report to assist with Quality Review and Sample Receipt Notification (SRN).

Signatories

This document has been electronically signed by the authorized signatories below. Electronic signing is conducted in accordance with US FDA 21 CFR Part 11.

<i>Signatories</i>	<i>Position</i>	<i>Laboratory Department</i>
Harpreet Chawla	Team Leader - Inorganics	Inorganics, Calgary, Alberta
Ruifang Zheng	Analyst	Inorganics, Calgary, Alberta
Shirley Li	Team Leader - Inorganics	Inorganics, Calgary, Alberta



CERTIFICATE OF ANALYSIS

<p>Work Order : CG2504914</p> <p>Client : District of Invermere</p> <p>Contact : Doug Hagen</p> <p>Address : 1101 Industrial Rd #1 Invermere BC Canada V0A 1K0</p> <p>Telephone : ---</p> <p>Project : ---</p> <p>PO : ---</p> <p>C-O-C number : ---</p> <p>Sampler : CORY BREAU</p> <p>Site : ---</p> <p>Quote number : CG2022INVR1000001</p> <p>No. of samples received : 4</p> <p>No. of samples analysed : 4</p>	<p>Page : 1 of 4</p> <p>Laboratory : ALS Environmental - Calgary</p> <p>Account Manager : Patryk Wojciak</p> <p>Address : 2559 29th Street NE Calgary AB Canada T1Y 7B5</p> <p>Telephone : +1 403 407 1800</p> <p>Date Samples Received : 23-Apr-2025 09:12</p> <p>Date Analysis : 23-Apr-2025</p> <p>Commenced : ---</p> <p>Issue Date : 29-Apr-2025 15:47</p>
--	---

This report supersedes any previous report(s) with this reference. Results apply to the sample(s) as submitted. This document shall not be reproduced, except in full.

This Certificate of Analysis contains the following information:

- General Comments
- Analytical Results

Additional information pertinent to this report will be found in the following separate attachments: Quality Control Report, QC Interpretive report to assist with Quality Review and Sample Receipt Notification (SRN).

Signatories

This document has been electronically signed by the authorized signatories below. Electronic signing is conducted in accordance with US FDA 21 CFR Part 11.

<i>Signatories</i>	<i>Position</i>	<i>Laboratory Department</i>
George Huang	Supervisor - Inorganic	Metals, Calgary, Alberta
Hannah Phung	Lab Assistant	Inorganics, Calgary, Alberta
Harpreet Chawla	Team Leader - Inorganics	Inorganics, Calgary, Alberta
Katarzyna Glinka	Analyst	Inorganics, Calgary, Alberta
Patryk Wojciak	Account Manager	Inorganics, Calgary, Alberta
Shirley Li	Team Leader - Inorganics	Inorganics, Calgary, Alberta



General Comments

The analytical methods used by ALS are developed using internationally recognized reference methods (where available), such as those published by US EPA, APHA Standard Methods, ASTM, ISO, Environment Canada, BC MOE, and Ontario MOE. Refer to the ALS Quality Control Interpretive report (QCI) for applicable references and methodology summaries. Reference methods may incorporate modifications to improve performance. Where a reported less than (<) result is higher than the LOR, this may be due to primary sample extract/digestate dilution and/or insufficient sample for analysis.

Where the LOR of a reported result differs from standard LOR, this may be due to high moisture content, insufficient sample (reduced weight employed) or matrix interference.

Please refer to Quality Control Interpretive report (QCI) for information regarding Holding Time compliance.

Key : CAS Number: Chemical Abstracts Services number is a unique identifier assigned to discrete substances
LOR: Limit of Reporting (detection limit).
Measurement Uncertainty: The reported uncertainties in this report are expanded uncertainties calculated using a coverage factor of 2, which gives a level of confidence of approximately 95%.
Surrogate: An analyte that is similar in behavior to target analyte(s), but that does not occur naturally in environmental samples. For applicable tests, surrogates are added to samples prior to analysis as a check on recovery.

<i>Unit</i>	<i>Description</i>
°C	degrees celsius
mg/L	milligrams per litre
pH units	pH units

>: greater than.
<: less than.

Test results reported relate only to the samples as received by the laboratory.

UNLESS OTHERWISE STATED on SRN or QCI Report, ALL SAMPLES WERE RECEIVED IN ACCEPTABLE CONDITION.

Qualifiers

<i>Qualifier</i>	<i>Description</i>
LPMB	Lab-Preserved for Total Metals. Sample received with pH > 2 and preserved at the lab. Total Metals results may be biased low.



Analytical Results

CG2504914-001

Sub-Matrix: Wastewater

(Matrix: Water)

Client sample ID: E207269 STP - (Grab pH: 7.77 Temp: 16.2C)

Client sampling date / time: 22-Apr-2025 15:05

Analyte	CAS Number	Result	LOR	Unit	Method/Lab	Prep Date	Analysis Date	QCLot
Field Tests								
pH, field	---	7.91	0.10	pH units	EF001/CG	-	24-Apr-2025	-
Temperature, field	---	15.0	0.10	°C	EF001/CG	-	24-Apr-2025	-
Physical Tests								
pH	---	8.06	0.10	pH units	E108/CG	24-Apr-2025	24-Apr-2025	1964732
Solids, total suspended [TSS]	---	30.4	1.0	mg/L	E160-L/CG	-	28-Apr-2025	1969918
Temperature, sample	---	20.8	0.10	°C	E218/CG	-	23-Apr-2025	-
Anions and Nutrients								
Ammonia, total (as N)	7664-41-7	48.2	0.500	mg/L	E298/CG	27-Apr-2025	29-Apr-2025	1968512
Chloride	16887-00-6	75.6	0.50	mg/L	E235.Cl-L/CG	23-Apr-2025	23-Apr-2025	1963250
Nitrate (as N)	14797-55-8	0.108	0.0250	mg/L	E235.NO3-L/CG	23-Apr-2025	23-Apr-2025	1963251
Nitrite (as N)	14797-65-0	0.0068	0.0050	mg/L	E235.NO2-L/CG	23-Apr-2025	23-Apr-2025	1963252
Phosphorus, total	7723-14-0	6.29	0.200	mg/L	E372-U/CG	26-Apr-2025	29-Apr-2025	1968117
Total Metals								
Sodium, total	7440-23-5	59.8 ^{LPMB}	0.250	mg/L	E420/CG	28-Apr-2025	28-Apr-2025	1968921
Aggregate Organics								
Carbonaceous biochemical oxygen demand [CBOD]	---	60.8	20.0	mg/L	E555/CG	-	24-Apr-2025	1965234

Please refer to the General Comments section for an explanation of any result qualifiers detected.

Analytical Results

CG2504914-002

Sub-Matrix: Wastewater

(Matrix: Water)

Client sample ID: E207275 - Well #10A

Client sampling date / time: 22-Apr-2025 15:40

Analyte	CAS Number	Result	LOR	Unit	Method/Lab	Prep Date	Analysis Date	QCLot
Field Tests								
pH, field	---	7.48	0.10	pH units	EF001/CG	-	24-Apr-2025	-
Temperature, field	---	14.2	0.10	°C	EF001/CG	-	24-Apr-2025	-
Physical Tests								
pH	---	8.34	0.10	pH units	E108/CG	24-Apr-2025	24-Apr-2025	1964732
Temperature, sample	---	20.8	0.10	°C	E218/CG	-	23-Apr-2025	-
Anions and Nutrients								
Ammonia, total (as N)	7664-41-7	5.21	0.0500	mg/L	E298/CG	27-Apr-2025	29-Apr-2025	1968512
Chloride	16887-00-6	53.6	0.10	mg/L	E235.Cl-L/CG	23-Apr-2025	23-Apr-2025	1963250
Nitrate (as N)	14797-55-8	0.151	0.0050	mg/L	E235.NO3-L/CG	23-Apr-2025	23-Apr-2025	1963251
Nitrite (as N)	14797-65-0	0.0045	0.0010	mg/L	E235.NO2-L/CG	23-Apr-2025	23-Apr-2025	1963252
Total Metals								
Sodium, total	7440-23-5	45.7	0.050	mg/L	E420/CG	28-Apr-2025	28-Apr-2025	1968921

Please refer to the General Comments section for an explanation of any result qualifiers detected.



CERTIFICATE OF ANALYSIS

<p>Work Order : CG2505710</p> <p>Client : District of Invermere</p> <p>Contact : Doug Hagen</p> <p>Address : 1101 Industrial Rd #1 Invermere BC Canada V0A 1K0</p> <p>Telephone : ---</p> <p>Project :</p> <p>PO : ---</p> <p>C-O-C number : ---</p> <p>Sampler : SCOTT TRAVIS</p> <p>Site : ---</p> <p>Quote number : CG2022INVR1000001</p> <p>No. of samples received : 1</p> <p>No. of samples analysed : 1</p>	<p>Page : 1 of 2</p> <p>Laboratory : ALS Environmental - Calgary</p> <p>Account Manager : Patryk Wojciak</p> <p>Address : 2559 29th Street NE Calgary AB Canada T1Y 7B5</p> <p>Telephone : +1 403 407 1800</p> <p>Date Samples Received : 07-May-2025 12:20</p> <p>Date Analysis : 07-May-2025</p> <p>Commenced :</p> <p>Issue Date : 14-May-2025 16:39</p>
--	---

This report supersedes any previous report(s) with this reference. Results apply to the sample(s) as submitted. This document shall not be reproduced, except in full.

This Certificate of Analysis contains the following information:

- General Comments
- Analytical Results

Additional information pertinent to this report will be found in the following separate attachments: Quality Control Report, QC Interpretive report to assist with Quality Review and Sample Receipt Notification (SRN).

Signatories

This document has been electronically signed by the authorized signatories below. Electronic signing is conducted in accordance with US FDA 21 CFR Part 11.

<i>Signatories</i>	<i>Position</i>	<i>Laboratory Department</i>
Anthony Calero	Supervisor - Inorganic	Inorganics, Calgary, Alberta
Hannah Phung	Lab Assistant	Inorganics, Calgary, Alberta
Patryk Wojciak	Account Manager	Inorganics, Calgary, Alberta
Shirley Li	Team Leader - Inorganics	Inorganics, Calgary, Alberta



CERTIFICATE OF ANALYSIS

<p>Work Order : CG2506232</p> <p>Client : District of Invermere</p> <p>Contact : Doug Hagen</p> <p>Address : 1101 Industrial Rd #1 Invermere BC Canada V0A 1K0</p> <p>Telephone : ---</p> <p>Project :</p> <p>PO : ---</p> <p>C-O-C number : ---</p> <p>Sampler : CB</p> <p>Site : ---</p> <p>Quote number : CG2022INVR1000001</p> <p>No. of samples received : 2</p> <p>No. of samples analysed : 2</p>	<p>Page : 1 of 3</p> <p>Laboratory : ALS Environmental - Calgary</p> <p>Account Manager : Patryk Wojciak</p> <p>Address : 2559 29th Street NE Calgary AB Canada T1Y 7B5</p> <p>Telephone : +1 403 407 1800</p> <p>Date Samples Received : 14-May-2025 08:18</p> <p>Date Analysis : 14-May-2025</p> <p>Commenced</p> <p>Issue Date : 21-May-2025 16:36</p>
--	---

This report supersedes any previous report(s) with this reference. Results apply to the sample(s) as submitted. This document shall not be reproduced, except in full.

This Certificate of Analysis contains the following information:

- General Comments
- Analytical Results

Additional information pertinent to this report will be found in the following separate attachments: Quality Control Report, QC Interpretive report to assist with Quality Review and Sample Receipt Notification (SRN).

Signatories

This document has been electronically signed by the authorized signatories below. Electronic signing is conducted in accordance with US FDA 21 CFR Part 11.

<i>Signatories</i>	<i>Position</i>	<i>Laboratory Department</i>
Hannah Phung	Lab Assistant	Inorganics, Calgary, Alberta
Harpreet Chawla	Team Leader - Inorganics	Inorganics, Calgary, Alberta
Patryk Wojciak	Account Manager	Inorganics, Calgary, Alberta
Shirley Li	Team Leader - Inorganics	Inorganics, Calgary, Alberta



General Comments

The analytical methods used by ALS are developed using internationally recognized reference methods (where available), such as those published by US EPA, APHA Standard Methods, ASTM, ISO, Environment Canada, BC MOE, and Ontario MOE. Refer to the ALS Quality Control Interpretive report (QCI) for applicable references and methodology summaries. Reference methods may incorporate modifications to improve performance.

Where a reported less than (<) result is higher than the LOR, this may be due to primary sample extract/digestate dilution and/or insufficient sample for analysis.

Where the LOR of a reported result differs from standard LOR, this may be due to high moisture content, insufficient sample (reduced weight employed) or matrix interference.

Please refer to Quality Control Interpretive report (QCI) for information regarding Holding Time compliance.

Key : CAS Number: Chemical Abstracts Services number is a unique identifier assigned to discrete substances

LOR: Limit of Reporting (detection limit).

Measurement Uncertainty: The reported uncertainties in this report are expanded uncertainties calculated using a coverage factor of 2, which gives a level of confidence of approximately 95%.

Surrogate: An analyte that is similar in behavior to target analyte(s), but that does not occur naturally in environmental samples. For applicable tests, surrogates are added to samples prior to analysis as a check on recovery.

<i>Unit</i>	<i>Description</i>
°C	degrees celsius
µS/cm	microsiemens per centimetre
mg/L	milligrams per litre
pH units	pH units

>: greater than.

<: less than.

Test results reported relate only to the samples as received by the laboratory.

UNLESS OTHERWISE STATED on SRN or QCI Report, ALL SAMPLES WERE RECEIVED IN ACCEPTABLE CONDITION.



CERTIFICATE OF ANALYSIS

<p>Work Order : CG2507294</p> <p>Client : District of Invermere</p> <p>Contact : Doug Hagen</p> <p>Address : 1101 Industrial Rd #1 Invermere BC Canada V0A 1K0</p> <p>Telephone : ---</p> <p>Project :</p> <p>PO : ---</p> <p>C-O-C number : ---</p> <p>Sampler : ---</p> <p>Site : District of Invermere</p> <p>Quote number : CG2022INVR1000001</p> <p>No. of samples received : 1</p> <p>No. of samples analysed : 1</p>	<p>Page : 1 of 2</p> <p>Laboratory : ALS Environmental - Calgary</p> <p>Account Manager : Patryk Wojciak</p> <p>Address : 2559 29th Street NE Calgary AB Canada T1Y 7B5</p> <p>Telephone : +1 403 407 1800</p> <p>Date Samples Received : 04-Jun-2025 15:06</p> <p>Date Analysis : 04-Jun-2025</p> <p>Commenced :</p> <p>Issue Date : 11-Jun-2025 08:29</p>
---	---

This report supersedes any previous report(s) with this reference. Results apply to the sample(s) as submitted. This document shall not be reproduced, except in full.

This Certificate of Analysis contains the following information:

- General Comments
- Analytical Results

Additional information pertinent to this report will be found in the following separate attachments: Quality Control Report, QC Interpretive report to assist with Quality Review and Sample Receipt Notification (SRN).

Signatories

This document has been electronically signed by the authorized signatories below. Electronic signing is conducted in accordance with US FDA 21 CFR Part 11.

<i>Signatories</i>	<i>Position</i>	<i>Laboratory Department</i>
Catherine Fong	Lab Analyst	Inorganics, Calgary, Alberta
Hannah Phung	Lab Assistant	Inorganics, Calgary, Alberta
Harpreet Chawla	Team Leader - Inorganics	Inorganics, Calgary, Alberta
Patryk Wojciak	Account Manager	Inorganics, Calgary, Alberta



CERTIFICATE OF ANALYSIS

<p>Work Order : CG2508134</p> <p>Client : District of Invermere</p> <p>Contact : Doug Hagen</p> <p>Address : 1101 Industrial Rd #1 Invermere BC Canada V0A 1K0</p> <p>Telephone : ---</p> <p>Project :</p> <p>PO : ---</p> <p>C-O-C number : ---</p> <p>Sampler : CORY BREAU</p> <p>Site : ---</p> <p>Quote number : CG2022INVR1000001</p> <p>No. of samples received : 1</p> <p>No. of samples analysed : 1</p>	<p>Page : 1 of 2</p> <p>Laboratory : ALS Environmental - Calgary</p> <p>Account Manager : Patryk Wojciak</p> <p>Address : 2559 29th Street NE Calgary AB Canada T1Y 7B5</p> <p>Telephone : +1 403 407 1800</p> <p>Date Samples Received : 18-Jun-2025 08:58</p> <p>Date Analysis : 18-Jun-2025</p> <p>Commenced</p> <p>Issue Date : 24-Jun-2025 14:38</p>
--	---

This report supersedes any previous report(s) with this reference. Results apply to the sample(s) as submitted. This document shall not be reproduced, except in full.

This Certificate of Analysis contains the following information:

- General Comments
- Analytical Results

Additional information pertinent to this report will be found in the following separate attachments: Quality Control Report, QC Interpretive report to assist with Quality Review and Sample Receipt Notification (SRN).

Signatories

This document has been electronically signed by the authorized signatories below. Electronic signing is conducted in accordance with US FDA 21 CFR Part 11.

<i>Signatories</i>	<i>Position</i>	<i>Laboratory Department</i>
Hannah Phung	Lab Assistant	Inorganics, Calgary, Alberta
Harpreet Chawla	Team Leader - Inorganics	Inorganics, Calgary, Alberta
Patryk Wojciak	Account Manager	Inorganics, Calgary, Alberta
Shirley Li	Team Leader - Inorganics	Inorganics, Calgary, Alberta



CERTIFICATE OF ANALYSIS

<p>Work Order : CG2509340</p> <p>Client : District of Invermere</p> <p>Contact : Doug Hagen</p> <p>Address : 1101 Industrial Rd #1 Invermere BC Canada V0A 1K0</p> <p>Telephone : ---</p> <p>Project : SEWER WEEKLY</p> <p>PO : ---</p> <p>C-O-C number : ---</p> <p>Sampler : CORY BREAU</p> <p>Site : ---</p> <p>Quote number : CG2022INVR1000001</p> <p>No. of samples received : 1</p> <p>No. of samples analysed : 1</p>	<p>Page : 1 of 2</p> <p>Laboratory : ALS Environmental - Calgary</p> <p>Account Manager : Patryk Wojciak</p> <p>Address : 2559 29th Street NE Calgary AB Canada T1Y 7B5</p> <p>Telephone : +1 403 407 1800</p> <p>Date Samples Received : 09-Jul-2025 08:30</p> <p>Date Analysis : 09-Jul-2025</p> <p>Commenced : ---</p> <p>Issue Date : 15-Jul-2025 16:52</p>
--	--

This report supersedes any previous report(s) with this reference. Results apply to the sample(s) as submitted. This document shall not be reproduced, except in full.

This Certificate of Analysis contains the following information:

- General Comments
- Analytical Results

Additional information pertinent to this report will be found in the following separate attachments: Quality Control Report, QC Interpretive report to assist with Quality Review and Sample Receipt Notification (SRN).

Signatories

This document has been electronically signed by the authorized signatories below. Electronic signing is conducted in accordance with US FDA 21 CFR Part 11.

<i>Signatories</i>	<i>Position</i>	<i>Laboratory Department</i>
Hannah Phung	Lab Assistant	Inorganics, Calgary, Alberta
Harpreet Chawla	Team Leader - Inorganics	Inorganics, Calgary, Alberta
Patryk Wojciak	Account Manager	Inorganics, Calgary, Alberta
Shirley Li	Team Leader - Inorganics	Inorganics, Calgary, Alberta



CERTIFICATE OF ANALYSIS

<p>Work Order : CG2510214</p> <p>Client : District of Invermere</p> <p>Contact : Doug Hagen</p> <p>Address : 1101 Industrial Rd #1 Invermere BC Canada V0A 1K0</p> <p>Telephone : ---</p> <p>Project : SEWER QUARTERLY</p> <p>PO : ---</p> <p>C-O-C number : ---</p> <p>Sampler : ---</p> <p>Site : ---</p> <p>Quote number : CG2022INVR1000001</p> <p>No. of samples received : 5</p> <p>No. of samples analysed : 5</p>	<p>Page : 1 of 5</p> <p>Laboratory : ALS Environmental - Calgary</p> <p>Account Manager : Patryk Wojciak</p> <p>Address : 2559 29th Street NE Calgary AB Canada T1Y 7B5</p> <p>Telephone : +1 403 407 1800</p> <p>Date Samples Received : 23-Jul-2025 12:30</p> <p>Date Analysis : 24-Jul-2025</p> <p>Commenced : ---</p> <p>Issue Date : 29-Jul-2025 16:37</p>
---	---

This report supersedes any previous report(s) with this reference. Results apply to the sample(s) as submitted. This document shall not be reproduced, except in full.

This Certificate of Analysis contains the following information:

- General Comments
- Analytical Results

Additional information pertinent to this report will be found in the following separate attachments: Quality Control Report, QC Interpretive report to assist with Quality Review and Sample Receipt Notification (SRN).

Signatories

This document has been electronically signed by the authorized signatories below. Electronic signing is conducted in accordance with US FDA 21 CFR Part 11.

<i>Signatories</i>	<i>Position</i>	<i>Laboratory Department</i>
Hannah Phung	Lab Assistant	Inorganics, Calgary, Alberta
Harpreet Chawla	Team Leader - Inorganics	Inorganics, Calgary, Alberta
Harpreet Chawla	Team Leader - Inorganics	Metals, Calgary, Alberta
Patryk Wojciak	Account Manager	Inorganics, Calgary, Alberta
Shirley Li	Team Leader - Inorganics	Inorganics, Calgary, Alberta



General Comments

The analytical methods used by ALS are developed using internationally recognized reference methods (where available), such as those published by US EPA, APHA Standard Methods, ASTM, ISO, Environment Canada, BC MOE, and Ontario MOE. Refer to the ALS Quality Control Interpretive report (QCI) for applicable references and methodology summaries. Reference methods may incorporate modifications to improve performance.

Where a reported less than (<) result is higher than the LOR, this may be due to primary sample extract/digestate dilution and/or insufficient sample for analysis.

Where the LOR of a reported result differs from standard LOR, this may be due to high moisture content, insufficient sample (reduced weight employed) or matrix interference.

Please refer to Quality Control Interpretive report (QCI) for information regarding Holding Time compliance.

Key : CAS Number: Chemical Abstracts Services number is a unique identifier assigned to discrete substances
LOR: Limit of Reporting (detection limit).
Measurement Uncertainty: The reported uncertainties in this report are expanded uncertainties calculated using a coverage factor of 2, which gives a level of confidence of approximately 95%.
Surrogate: An analyte that is similar in behavior to target analyte(s), but that does not occur naturally in environmental samples. For applicable tests, surrogates are added to samples prior to analysis as a check on recovery.

<i>Unit</i>	<i>Description</i>
°C	degrees celsius
mg/L	milligrams per litre
pH units	pH units

>: greater than.

<: less than.

Test results reported relate only to the samples as received by the laboratory.

UNLESS OTHERWISE STATED on SRN or QCI Report, ALL SAMPLES WERE RECEIVED IN ACCEPTABLE CONDITION.

Qualifiers

<i>Qualifier</i>	<i>Description</i>
RRV	Reported result verified by repeat analysis.



Analytical Results

CG2510214-001

Sub-Matrix:Water

(Matrix: Water)

Client sample ID: E207269 STP - (Grab pH: 7.55 Temp: 19.3C)

Client sampling date / time: 22-Jul-2025 14:50

Analyte	CAS Number	Result	LOR	Unit	Method/Lab	Prep Date	Analysis Date	QCLot
Field Tests								
pH, field	---	7.73	0.10	pH units	EF001/CG	-	24-Jul-2025	-
Temperature, field	---	14.9	0.10	°C	EF001/CG	-	24-Jul-2025	-
Physical Tests								
Solids, total suspended [TSS]	---	62.5	1.0	mg/L	E160-L/CG	-	28-Jul-2025	2129730
Anions and Nutrients								
Ammonia, total (as N)	7664-41-7	5.50	0.250	mg/L	E298/CG	24-Jul-2025	24-Jul-2025	2124700
Chloride	16887-00-6	76.4	0.10	mg/L	E235.Cl-L/CG	24-Jul-2025	24-Jul-2025	2125372
Nitrate (as N)	14797-55-8	6.44	0.0050	mg/L	E235.NO3-L/CG	24-Jul-2025	24-Jul-2025	2125374
Nitrite (as N)	14797-65-0	5.97 ^{RRV}	0.0010	mg/L	E235.NO2-L/CG	24-Jul-2025	24-Jul-2025	2125373
Phosphorus, total	7723-14-0	7.02	0.200	mg/L	E372-U/CG	25-Jul-2025	28-Jul-2025	2126716
Total Metals								
Sodium, total	7440-23-5	61.5	0.250	mg/L	E420/CG	25-Jul-2025	26-Jul-2025	2124137
Aggregate Organics								
Carbonaceous biochemical oxygen demand [CBOD]	---	34.8	20.0	mg/L	E555/CG	-	24-Jul-2025	2125778

Please refer to the General Comments section for an explanation of any result qualifiers detected.

Analytical Results

CG2510214-002

Sub-Matrix:Water

(Matrix: Water)

Client sample ID: E207272 - WELL #5

Client sampling date / time: 22-Jul-2025 15:45

Analyte	CAS Number	Result	LOR	Unit	Method/Lab	Prep Date	Analysis Date	QCLot
Field Tests								
pH, field	---	7.89	0.10	pH units	EF001/CG	-	24-Jul-2025	-
Temperature, field	---	14.7	0.10	°C	EF001/CG	-	24-Jul-2025	-
Anions and Nutrients								
Ammonia, total (as N)	7664-41-7	0.0081	0.0050	mg/L	E298/CG	24-Jul-2025	24-Jul-2025	2124700
Chloride	16887-00-6	2.04	0.10	mg/L	E235.Cl-L/CG	24-Jul-2025	24-Jul-2025	2125372
Nitrate (as N)	14797-55-8	0.790	0.0050	mg/L	E235.NO3-L/CG	24-Jul-2025	24-Jul-2025	2125374
Nitrite (as N)	14797-65-0	0.0029 ^{RRV}	0.0010	mg/L	E235.NO2-L/CG	24-Jul-2025	24-Jul-2025	2125373
Total Metals								
Sodium, total	7440-23-5	3.95	0.050	mg/L	E420/CG	25-Jul-2025	26-Jul-2025	2124137

Please refer to the General Comments section for an explanation of any result qualifiers detected.

Analytical Results

CG2510214-003

Sub-Matrix:Water

(Matrix: Water)

Client sample ID: E207275 - WELL #10A

Client sampling date / time: 22-Jul-2025 15:20

Analyte	CAS Number	Result	LOR	Unit	Method/Lab	Prep Date	Analysis Date	QCLot
Field Tests								
pH, field	---	7.48	0.10	pH units	EF001/CG	-	24-Jul-2025	-



Analytical Results

CG2510214-003

Sub-Matrix:Water

(Matrix: Water)

Client sample ID: E207275 - WELL #10A

Client sampling date / time: 22-Jul-2025 15:20

Analyte	CAS Number	Result	LOR	Unit	Method/Lab	Prep Date	Analysis Date	QCLot
Field Tests								
Temperature, field	---	11.3	0.10	°C	EF001/CG	-	24-Jul-2025	-
Anions and Nutrients								
Ammonia, total (as N)	7664-41-7	5.87	0.0500	mg/L	E298/CG	24-Jul-2025	24-Jul-2025	2124700
Chloride	16887-00-6	67.8	0.10	mg/L	E235.CH-L/CG	24-Jul-2025	24-Jul-2025	2125372
Nitrate (as N)	14797-55-8	0.0918	0.0050	mg/L	E235.NO3-L/CG	24-Jul-2025	24-Jul-2025	2125374
Nitrite (as N)	14797-65-0	0.0045	0.0010	mg/L	E235.NO2-L/CG	24-Jul-2025	24-Jul-2025	2125373
Total Metals								
Sodium, total	7440-23-5	52.8	0.050	mg/L	E420/CG	25-Jul-2025	26-Jul-2025	2124137

Please refer to the General Comments section for an explanation of any result qualifiers detected.

Analytical Results

CG2510214-004

Sub-Matrix:Water

(Matrix: Water)

Client sample ID: E207276 - WELL #11

Client sampling date / time: 22-Jul-2025 15:35

Analyte	CAS Number	Result	LOR	Unit	Method/Lab	Prep Date	Analysis Date	QCLot
Field Tests								
pH, field	---	7.37	0.10	pH units	EF001/CG	-	24-Jul-2025	-
Temperature, field	---	11.7	0.10	°C	EF001/CG	-	24-Jul-2025	-
Anions and Nutrients								
Ammonia, total (as N)	7664-41-7	0.293	0.0050	mg/L	E298/CG	24-Jul-2025	24-Jul-2025	2124700
Chloride	16887-00-6	77.5	0.50	mg/L	E235.CH-L/CG	24-Jul-2025	24-Jul-2025	2125372
Nitrate (as N)	14797-55-8	10.9	0.0250	mg/L	E235.NO3-L/CG	24-Jul-2025	24-Jul-2025	2125374
Nitrite (as N)	14797-65-0	0.0090	0.0050	mg/L	E235.NO2-L/CG	24-Jul-2025	24-Jul-2025	2125373
Total Metals								
Sodium, total	7440-23-5	60.1	0.050	mg/L	E420/CG	25-Jul-2025	26-Jul-2025	2124137

Please refer to the General Comments section for an explanation of any result qualifiers detected.

Analytical Results

CG2510214-005

Sub-Matrix:Water

(Matrix: Water)

Client sample ID: E207278 - WELL #117

Client sampling date / time: 22-Jul-2025 15:10

Analyte	CAS Number	Result	LOR	Unit	Method/Lab	Prep Date	Analysis Date	QCLot
Field Tests								
pH, field	---	7.87	0.10	pH units	EF001/CG	-	24-Jul-2025	-
Temperature, field	---	11.7	0.10	°C	EF001/CG	-	24-Jul-2025	-
Anions and Nutrients								
Ammonia, total (as N)	7664-41-7	0.0206	0.0050	mg/L	E298/CG	24-Jul-2025	24-Jul-2025	2124700
Chloride	16887-00-6	2.23	0.10	mg/L	E235.CH-L/CG	24-Jul-2025	24-Jul-2025	2125372
Nitrate (as N)	14797-55-8	0.274	0.0050	mg/L	E235.NO3-L/CG	24-Jul-2025	24-Jul-2025	2125374
Nitrite (as N)	14797-65-0	<0.0010	0.0010	mg/L	E235.NO2-L/CG	24-Jul-2025	24-Jul-2025	2125373
Total Metals								



CERTIFICATE OF ANALYSIS

<p>Work Order : CG2511333</p> <p>Client : District of Invermere</p> <p>Contact : Doug Hagen</p> <p>Address : 1101 Industrial Rd #1 Invermere BC Canada V0A 1K0</p> <p>Telephone : ---</p> <p>Project : SEWER WEEKLY</p> <p>PO : ---</p> <p>C-O-C number : ---</p> <p>Sampler : CB</p> <p>Site : ---</p> <p>Quote number : CG2022INVR1000001</p> <p>No. of samples received : 1</p> <p>No. of samples analysed : 1</p>	<p>Page : 1 of 2</p> <p>Laboratory : ALS Environmental - Calgary</p> <p>Account Manager : Patryk Wojciak</p> <p>Address : 2559 29th Street NE Calgary AB Canada T1Y 7B5</p> <p>Telephone : +1 403 407 1800</p> <p>Date Samples Received : 13-Aug-2025 11:20</p> <p>Date Analysis : 13-Aug-2025</p> <p>Commenced : ---</p> <p>Issue Date : 19-Aug-2025 14:03</p>
--	---

This report supersedes any previous report(s) with this reference. Results apply to the sample(s) as submitted. This document shall not be reproduced, except in full.

This Certificate of Analysis contains the following information:

- General Comments
- Analytical Results

Additional information pertinent to this report will be found in the following separate attachments: Quality Control Report, QC Interpretive report to assist with Quality Review and Sample Receipt Notification (SRN).

Signatories

This document has been electronically signed by the authorized signatories below. Electronic signing is conducted in accordance with US FDA 21 CFR Part 11.

<i>Signatories</i>	<i>Position</i>	<i>Laboratory Department</i>
Hannah Phung	Lab Assistant	Inorganics, Calgary, Alberta
Harpreet Chawla	Team Leader - Inorganics	Inorganics, Calgary, Alberta
Patryk Wojciak	Account Manager	Inorganics, Calgary, Alberta
Shirley Li	Team Leader - Inorganics	Inorganics, Calgary, Alberta



CERTIFICATE OF ANALYSIS

<p>Work Order : CG2512160</p> <p>Client : District of Invermere</p> <p>Contact : Doug Hagen</p> <p>Address : 1101 Industrial Rd #1 Invermere BC Canada V0A 1K0</p> <p>Telephone : ---</p> <p>Project :</p> <p>PO : ---</p> <p>C-O-C number : ---</p> <p>Sampler : CORY B.</p> <p>Site : ---</p> <p>Quote number : CG2022INVR1000001</p> <p>No. of samples received : 1</p> <p>No. of samples analysed : 1</p>	<p>Page : 1 of 2</p> <p>Laboratory : ALS Environmental - Calgary</p> <p>Account Manager : Patryk Wojciak</p> <p>Address : 2559 29th Street NE Calgary AB Canada T1Y 7B5</p> <p>Telephone : +1 403 407 1800</p> <p>Date Samples Received : 27-Aug-2025 13:30</p> <p>Date Analysis : 27-Aug-2025</p> <p>Commenced</p> <p>Issue Date : 03-Sep-2025 07:19</p>
---	---

This report supersedes any previous report(s) with this reference. Results apply to the sample(s) as submitted. This document shall not be reproduced, except in full.

This Certificate of Analysis contains the following information:

- General Comments
- Analytical Results

Additional information pertinent to this report will be found in the following separate attachments: Quality Control Report, QC Interpretive report to assist with Quality Review and Sample Receipt Notification (SRN).

Signatories

This document has been electronically signed by the authorized signatories below. Electronic signing is conducted in accordance with US FDA 21 CFR Part 11.

<i>Signatories</i>	<i>Position</i>	<i>Laboratory Department</i>
Hannah Phung	Lab Assistant	Inorganics, Calgary, Alberta
Harpreet Chawla	Team Leader - Inorganics	Inorganics, Calgary, Alberta
Patryk Wojciak	Account Manager	Inorganics, Calgary, Alberta
Shirley Li	Team Leader - Inorganics	Inorganics, Calgary, Alberta



CERTIFICATE OF ANALYSIS

<p>Work Order : CG2512888</p> <p>Client : District of Invermere</p> <p>Contact : Doug Hagen</p> <p>Address : 1101 Industrial Rd #1 Invermere BC Canada V0A 1K0</p> <p>Telephone : ---</p> <p>Project :</p> <p>PO : ---</p> <p>C-O-C number : ---</p> <p>Sampler : CORY B.</p> <p>Site : ---</p> <p>Quote number : CG2022INVR1000001</p> <p>No. of samples received : 1</p> <p>No. of samples analysed : 1</p>	<p>Page : 1 of 2</p> <p>Laboratory : ALS Environmental - Calgary</p> <p>Account Manager : Patryk Wojciak</p> <p>Address : 2559 29th Street NE Calgary AB Canada T1Y 7B5</p> <p>Telephone : +1 403 407 1800</p> <p>Date Samples Received : 10-Sep-2025 09:55</p> <p>Date Analysis : 10-Sep-2025</p> <p>Commenced</p> <p>Issue Date : 16-Sep-2025 15:59</p>
---	---

This report supersedes any previous report(s) with this reference. Results apply to the sample(s) as submitted. This document shall not be reproduced, except in full.

This Certificate of Analysis contains the following information:

- General Comments
- Analytical Results

Additional information pertinent to this report will be found in the following separate attachments: Quality Control Report, QC Interpretive report to assist with Quality Review and Sample Receipt Notification (SRN).

Signatories

This document has been electronically signed by the authorized signatories below. Electronic signing is conducted in accordance with US FDA 21 CFR Part 11.

<i>Signatories</i>	<i>Position</i>	<i>Laboratory Department</i>
Hannah Phung	Lab Assistant	Inorganics, Calgary, Alberta
Harpreet Chawla	Team Leader - Inorganics	Inorganics, Calgary, Alberta
Patryk Wojciak	Account Manager	Inorganics, Calgary, Alberta



CERTIFICATE OF ANALYSIS

<p>Work Order : CG2513769</p> <p>Client : District of Invermere</p> <p>Contact : Doug Hagen</p> <p>Address : 1101 Industrial Rd #1 Invermere BC Canada V0A 1K0</p> <p>Telephone : ---</p> <p>Project :</p> <p>PO : ---</p> <p>C-O-C number : ---</p> <p>Sampler : RH</p> <p>Site : District of Invermere</p> <p>Quote number : CG2022INVR1000001</p> <p>No. of samples received : 1</p> <p>No. of samples analysed : 1</p>	<p>Page : 1 of 2</p> <p>Laboratory : ALS Environmental - Calgary</p> <p>Account Manager : Patryk Wojciak</p> <p>Address : 2559 29th Street NE Calgary AB Canada T1Y 7B5</p> <p>Telephone : +1 403 407 1800</p> <p>Date Samples Received : 24-Sep-2025 10:00</p> <p>Date Analysis : 24-Sep-2025</p> <p>Commenced</p> <p>Issue Date : 30-Sep-2025 16:24</p>
---	---

This report supersedes any previous report(s) with this reference. Results apply to the sample(s) as submitted. This document shall not be reproduced, except in full.

This Certificate of Analysis contains the following information:

- General Comments
- Analytical Results

Additional information pertinent to this report will be found in the following separate attachments: Quality Control Report, QC Interpretive report to assist with Quality Review and Sample Receipt Notification (SRN).

Signatories

This document has been electronically signed by the authorized signatories below. Electronic signing is conducted in accordance with US FDA 21 CFR Part 11.

<i>Signatories</i>	<i>Position</i>	<i>Laboratory Department</i>
Hannah Phung	Lab Assistant	Inorganics, Calgary, Alberta
Harpreet Chawla	Team Leader - Inorganics	Inorganics, Calgary, Alberta
Patryk Wojciak	Account Manager	Inorganics, Calgary, Alberta



CERTIFICATE OF ANALYSIS

<p>Work Order : CG2514712</p> <p>Client : District of Invermere</p> <p>Contact : Doug Hagen</p> <p>Address : 1101 Industrial Rd #1 Invermere BC Canada V0A 1K0</p> <p>Telephone : ---</p> <p>Project : SEWER WEEKLY</p> <p>PO : ---</p> <p>C-O-C number : ---</p> <p>Sampler : ST/RH</p> <p>Site : District of Invermere</p> <p>Quote number : CG2022INVR1000001</p> <p>No. of samples received : 1</p> <p>No. of samples analysed : 1</p>	<p>Page : 1 of 2</p> <p>Laboratory : ALS Environmental - Calgary</p> <p>Account Manager : Patryk Wojciak</p> <p>Address : 2559 29th Street NE Calgary AB Canada T1Y 7B5</p> <p>Telephone : +1 403 407 1800</p> <p>Date Samples Received : 09-Oct-2025 13:45</p> <p>Date Analysis : 09-Oct-2025</p> <p>Commenced : 16-Oct-2025 10:58</p> <p>Issue Date : 16-Oct-2025 10:58</p>
---	--

This report supersedes any previous report(s) with this reference. Results apply to the sample(s) as submitted. This document shall not be reproduced, except in full.

This Certificate of Analysis contains the following information:

- General Comments
- Analytical Results

Additional information pertinent to this report will be found in the following separate attachments: Quality Control Report, QC Interpretive report to assist with Quality Review and Sample Receipt Notification (SRN).

Signatories

This document has been electronically signed by the authorized signatories below. Electronic signing is conducted in accordance with US FDA 21 CFR Part 11.

<i>Signatories</i>	<i>Position</i>	<i>Laboratory Department</i>
Hannah Phung	Lab Assistant	Inorganics, Calgary, Alberta
Harpreet Chawla	Team Leader - Inorganics	Inorganics, Calgary, Alberta
Patryk Wojciak	Account Manager	Inorganics, Calgary, Alberta
Shirley Li	Team Leader - Inorganics	Inorganics, Calgary, Alberta



CERTIFICATE OF ANALYSIS

<p>Work Order : CG2515439</p> <p>Client : District of Invermere</p> <p>Contact : Doug Hagen</p> <p>Address : 1101 Industrial Rd #1 Invermere BC Canada V0A 1K0</p> <p>Telephone : ---</p> <p>Project : SEWER QUARTERLY</p> <p>PO : ---</p> <p>C-O-C number : ---</p> <p>Sampler : Scott Travis</p> <p>Site : ---</p> <p>Quote number : CG2022INVR1000001</p> <p>No. of samples received : 1</p> <p>No. of samples analysed : 1</p>	<p>Page : 1 of 2</p> <p>Laboratory : ALS Environmental - Calgary</p> <p>Account Manager : Patryk Wojciak</p> <p>Address : 2559 29th Street NE Calgary AB Canada T1Y 7B5</p> <p>Telephone : +1 403 407 1800</p> <p>Date Samples Received : 22-Oct-2025 10:10</p> <p>Date Analysis : 22-Oct-2025</p> <p>Commenced : 29-Oct-2025 13:13</p>
---	--

This report supersedes any previous report(s) with this reference. Results apply to the sample(s) as submitted. This document shall not be reproduced, except in full.

This Certificate of Analysis contains the following information:

- General Comments
- Analytical Results

Additional information pertinent to this report will be found in the following separate attachments: Quality Control Report, QC Interpretive report to assist with Quality Review and Sample Receipt Notification (SRN).

Signatories

This document has been electronically signed by the authorized signatories below. Electronic signing is conducted in accordance with US FDA 21 CFR Part 11.

<i>Signatories</i>	<i>Position</i>	<i>Laboratory Department</i>
Hannah Phung	Lab Assistant	Inorganics, Calgary, Alberta
Katarzyna Glinka	Analyst	Inorganics, Calgary, Alberta
Patryk Wojciak	Account Manager	Inorganics, Calgary, Alberta
Shirley Li	Team Leader - Inorganics	Inorganics, Calgary, Alberta
Shirley Li	Team Leader - Inorganics	Metals, Calgary, Alberta



CERTIFICATE OF ANALYSIS

<p>Work Order : CG2515849</p> <p>Client : District of Invermere</p> <p>Contact : Doug Hagen</p> <p>Address : 1101 Industrial Rd #1 Invermere BC Canada V0A 1K0</p> <p>Telephone : ---</p> <p>Project :</p> <p>PO : ---</p> <p>C-O-C number : ---</p> <p>Sampler : C. BREAU</p> <p>Site : ---</p> <p>Quote number : CG2022INVR1000001</p> <p>No. of samples received : 3</p> <p>No. of samples analysed : 3</p>	<p>Page : 1 of 4</p> <p>Laboratory : ALS Environmental - Calgary</p> <p>Account Manager : Patryk Wojciak</p> <p>Address : 2559 29th Street NE Calgary AB Canada T1Y 7B5</p> <p>Telephone : +1 403 407 1800</p> <p>Date Samples Received : 29-Oct-2025 09:05</p> <p>Date Analysis : 29-Oct-2025</p> <p>Commenced</p> <p>Issue Date : 03-Nov-2025 12:59</p>
--	---

This report supersedes any previous report(s) with this reference. Results apply to the sample(s) as submitted. This document shall not be reproduced, except in full.

This Certificate of Analysis contains the following information:

- General Comments
- Analytical Results

Additional information pertinent to this report will be found in the following separate attachments: Quality Control Report, QC Interpretive report to assist with Quality Review and Sample Receipt Notification (SRN).

Signatories

This document has been electronically signed by the authorized signatories below. Electronic signing is conducted in accordance with US FDA 21 CFR Part 11.

<i>Signatories</i>	<i>Position</i>	<i>Laboratory Department</i>
Harpreet Chawla	Team Leader - Inorganics	Metals, Calgary, Alberta
Patryk Wojciak	Account Manager	Inorganics, Calgary, Alberta
Shirley Li	Team Leader - Inorganics	Inorganics, Calgary, Alberta



General Comments

The analytical methods used by ALS are developed using internationally recognized reference methods (where available), such as those published by US EPA, APHA Standard Methods, ASTM, ISO, Environment Canada, BC MOE, and Ontario MOE. Refer to the ALS Quality Control Interpretive report (QCI) for applicable references and methodology summaries. Reference methods may incorporate modifications to improve performance.

Where a reported less than (<) result is higher than the LOR, this may be due to primary sample extract/digestate dilution and/or insufficient sample for analysis.

Where the LOR of a reported result differs from standard LOR, this may be due to high moisture content, insufficient sample (reduced weight employed) or matrix interference.

Please refer to Quality Control Interpretive report (QCI) for information regarding Holding Time compliance.

Key : CAS Number: Chemical Abstracts Services number is a unique identifier assigned to discrete substances

LOR: Limit of Reporting (detection limit).

Measurement Uncertainty: The reported uncertainties in this report are expanded uncertainties calculated using a coverage factor of 2, which gives a level of confidence of approximately 95%.

Surrogate: An analyte that is similar in behavior to target analyte(s), but that does not occur naturally in environmental samples. For applicable tests, surrogates are added to samples prior to analysis as a check on recovery.

<i>Unit</i>	<i>Description</i>
°C	degrees celsius
mg/L	milligrams per litre
pH units	pH units

>: greater than.

<: less than.

Test results reported relate only to the samples as received by the laboratory.

UNLESS OTHERWISE STATED on SRN or QCI Report, ALL SAMPLES WERE RECEIVED IN ACCEPTABLE CONDITION.



Analytical Results

CG2515849-001

Sub-Matrix:Water

(Matrix: Water)

Client sample ID: E207275 - WELL #10A

Client sampling date / time: 28-Oct-2025 15:25

Analyte	CAS Number	Result	LOR	Unit	Method/Lab	Prep Date	Analysis Date	QCLot
Field Tests								
pH, field	----	7.43	0.10	pH units	EF001/CG	-	29-Oct-2025	-
Temperature, field	----	13.1	0.10	°C	EF001/CG	-	29-Oct-2025	-
Anions and Nutrients								
Ammonia, total (as N)	7664-41-7	6.81	0.250	mg/L	E298/CG	30-Oct-2025	30-Oct-2025	2309394
Chloride	16887-00-6	69.0	0.10	mg/L	E235.Cl-L/CG	29-Oct-2025	29-Oct-2025	2307130
Nitrate (as N)	14797-55-8	0.114	0.0050	mg/L	E235.NO3-L/CG	29-Oct-2025	29-Oct-2025	2307127
Nitrite (as N)	14797-65-0	0.0106	0.0010	mg/L	E235.NO2-L/CG	29-Oct-2025	29-Oct-2025	2307128
Total Metals								
Sodium, total	7440-23-5	49.9	0.050	mg/L	E420/CG	30-Oct-2025	30-Oct-2025	2307960

Please refer to the General Comments section for an explanation of any result qualifiers detected.

Analytical Results

CG2515849-002

Sub-Matrix:Water

(Matrix: Water)

Client sample ID: E207276 - WELL #11

Client sampling date / time: 28-Oct-2025 15:15

Analyte	CAS Number	Result	LOR	Unit	Method/Lab	Prep Date	Analysis Date	QCLot
Field Tests								
pH, field	----	7.29	0.10	pH units	EF001/CG	-	29-Oct-2025	-
Temperature, field	----	15.9	0.10	°C	EF001/CG	-	29-Oct-2025	-
Anions and Nutrients								
Ammonia, total (as N)	7664-41-7	1.78	0.250	mg/L	E298/CG	30-Oct-2025	30-Oct-2025	2309394
Chloride	16887-00-6	77.9	0.10	mg/L	E235.Cl-L/CG	29-Oct-2025	29-Oct-2025	2307130
Nitrate (as N)	14797-55-8	0.0902	0.0050	mg/L	E235.NO3-L/CG	29-Oct-2025	29-Oct-2025	2307127
Nitrite (as N)	14797-65-0	0.0023	0.0010	mg/L	E235.NO2-L/CG	29-Oct-2025	29-Oct-2025	2307128
Total Metals								
Sodium, total	7440-23-5	59.8	0.050	mg/L	E420/CG	30-Oct-2025	30-Oct-2025	2307960

Please refer to the General Comments section for an explanation of any result qualifiers detected.

Analytical Results

CG2515849-003

Sub-Matrix:Water

(Matrix: Water)

Client sample ID: E207278 - WELL #117

Client sampling date / time: 28-Oct-2025 15:00

Analyte	CAS Number	Result	LOR	Unit	Method/Lab	Prep Date	Analysis Date	QCLot
Field Tests								
pH, field	----	7.72	0.10	pH units	EF001/CG	-	29-Oct-2025	-
Temperature, field	----	10.7	0.10	°C	EF001/CG	-	29-Oct-2025	-
Anions and Nutrients								
Ammonia, total (as N)	7664-41-7	0.0084	0.0050	mg/L	E298/CG	30-Oct-2025	30-Oct-2025	2309394
Chloride	16887-00-6	11.5	0.10	mg/L	E235.Cl-L/CG	29-Oct-2025	29-Oct-2025	2307130
Nitrate (as N)	14797-55-8	0.499	0.0050	mg/L	E235.NO3-L/CG	29-Oct-2025	29-Oct-2025	2307127



CERTIFICATE OF ANALYSIS

<p>Work Order : CG2516263</p> <p>Client : District of Invermere</p> <p>Contact : Doug Hagen</p> <p>Address : 1101 Industrial Rd #1 Invermere BC Canada V0A 1K0</p> <p>Telephone : ---</p> <p>Project : SEWER WEEKLY</p> <p>PO : ---</p> <p>C-O-C number : ---</p> <p>Sampler : Cory Breau</p> <p>Site : ---</p> <p>Quote number : CG2022INVR1000001</p> <p>No. of samples received : 1</p> <p>No. of samples analysed : 1</p>	<p>Page : 1 of 2</p> <p>Laboratory : ALS Environmental - Calgary</p> <p>Account Manager : Patryk Wojciak</p> <p>Address : 2559 29th Street NE Calgary AB Canada T1Y 7B5</p> <p>Telephone : +1 403 407 1800</p> <p>Date Samples Received : 05-Nov-2025 10:10</p> <p>Date Analysis : 05-Nov-2025</p> <p>Commenced : ---</p> <p>Issue Date : 12-Nov-2025 13:02</p>
--	---

This report supersedes any previous report(s) with this reference. Results apply to the sample(s) as submitted. This document shall not be reproduced, except in full.

This Certificate of Analysis contains the following information:

- General Comments
- Analytical Results

Additional information pertinent to this report will be found in the following separate attachments: Quality Control Report, QC Interpretive report to assist with Quality Review and Sample Receipt Notification (SRN).

Signatories

This document has been electronically signed by the authorized signatories below. Electronic signing is conducted in accordance with US FDA 21 CFR Part 11.

<i>Signatories</i>	<i>Position</i>	<i>Laboratory Department</i>
Hannah Phung	Lab Assistant	Inorganics, Calgary, Alberta
Patryk Wojciak	Account Manager	Inorganics, Calgary, Alberta
Shirley Li	Team Leader - Inorganics	Inorganics, Calgary, Alberta



CERTIFICATE OF ANALYSIS

<p>Work Order : CG2517018</p> <p>Client : District of Invermere</p> <p>Contact : Doug Hagen</p> <p>Address : 1101 Industrial Rd #1 Invermere BC Canada V0A 1K0</p> <p>Telephone : ---</p> <p>Project : SEWER WEEKLY</p> <p>PO : ---</p> <p>C-O-C number : ---</p> <p>Sampler : Cory Breau</p> <p>Site : ---</p> <p>Quote number : CG2022INVR1000001</p> <p>No. of samples received : 1</p> <p>No. of samples analysed : 1</p>	<p>Page : 1 of 2</p> <p>Laboratory : ALS Environmental - Calgary</p> <p>Account Manager : Patryk Wojciak</p> <p>Address : 2559 29th Street NE Calgary AB Canada T1Y 7B5</p> <p>Telephone : +1 403 407 1800</p> <p>Date Samples Received : 20-Nov-2025 10:55</p> <p>Date Analysis : 20-Nov-2025</p> <p>Commenced : ---</p> <p>Issue Date : 26-Nov-2025 12:35</p>
--	--

This report supersedes any previous report(s) with this reference. Results apply to the sample(s) as submitted. This document shall not be reproduced, except in full.

This Certificate of Analysis contains the following information:

- General Comments
- Analytical Results

Additional information pertinent to this report will be found in the following separate attachments: Quality Control Report, QC Interpretive report to assist with Quality Review and Sample Receipt Notification (SRN).

Signatories

This document has been electronically signed by the authorized signatories below. Electronic signing is conducted in accordance with US FDA 21 CFR Part 11.

<i>Signatories</i>	<i>Position</i>	<i>Laboratory Department</i>
Hannah Phung	Lab Assistant	Inorganics, Calgary, Alberta
Harpreet Chawla	Team Leader - Inorganics	Inorganics, Calgary, Alberta
Patryk Wojciak	Account Manager	Inorganics, Calgary, Alberta
Shirley Li	Team Leader - Inorganics	Inorganics, Calgary, Alberta



CERTIFICATE OF ANALYSIS

<p>Work Order : CG2517543</p> <p>Client : District of Invermere</p> <p>Contact : Doug Hagen</p> <p>Address : 1101 Industrial Rd #1 Invermere BC Canada V0A 1K0</p> <p>Telephone : ---</p> <p>Project : SEWER WEEKLY</p> <p>PO : ---</p> <p>C-O-C number : ---</p> <p>Sampler : Scott Travis</p> <p>Site : District of Invermere Sewer</p> <p>Quote number : CG2022INVR1000001</p> <p>No. of samples received : 1</p> <p>No. of samples analysed : 1</p>	<p>Page : 1 of 2</p> <p>Laboratory : ALS Environmental - Calgary</p> <p>Account Manager : Patryk Wojciak</p> <p>Address : 2559 29th Street NE Calgary AB Canada T1Y 7B5</p> <p>Telephone : +1 403 407 1800</p> <p>Date Samples Received : 03-Dec-2025 08:20</p> <p>Date Analysis : 03-Dec-2025</p> <p>Commenced : ---</p> <p>Issue Date : 10-Dec-2025 10:56</p>
--	--

This report supersedes any previous report(s) with this reference. Results apply to the sample(s) as submitted. This document shall not be reproduced, except in full.

This Certificate of Analysis contains the following information:

- General Comments
- Analytical Results

Additional information pertinent to this report will be found in the following separate attachments: Quality Control Report, QC Interpretive report to assist with Quality Review and Sample Receipt Notification (SRN).

Signatories

This document has been electronically signed by the authorized signatories below. Electronic signing is conducted in accordance with US FDA 21 CFR Part 11.

<i>Signatories</i>	<i>Position</i>	<i>Laboratory Department</i>
Hannah Phung	Lab Assistant	Inorganics, Calgary, Alberta
Harpreet Chawla	Team Leader - Inorganics	Inorganics, Calgary, Alberta
Patryk Wojciak	Account Manager	Inorganics, Calgary, Alberta
Shirley Li	Team Leader - Inorganics	Inorganics, Calgary, Alberta



CERTIFICATE OF ANALYSIS

<p>Work Order : CG2517923</p> <p>Client : District of Invermere</p> <p>Contact : Doug Hagen</p> <p>Address : 1101 Industrial Rd #1 Invermere BC Canada V0A 1K0</p> <p>Telephone : ---</p> <p>Project : SEWER WEEKLY</p> <p>PO : ---</p> <p>C-O-C number : ---</p> <p>Sampler : CB</p> <p>Site : ---</p> <p>Quote number : CG2022INVR1000001</p> <p>No. of samples received : 1</p> <p>No. of samples analysed : 1</p>	<p>Page : 1 of 2</p> <p>Laboratory : ALS Environmental - Calgary</p> <p>Account Manager : Patryk Wojciak</p> <p>Address : 2559 29th Street NE Calgary AB Canada T1Y 7B5</p> <p>Telephone : +1 403 407 1800</p> <p>Date Samples Received : 10-Dec-2025 13:10</p> <p>Date Analysis : 11-Dec-2025</p> <p>Commenced : ---</p> <p>Issue Date : 17-Dec-2025 12:56</p>
--	---

This report supersedes any previous report(s) with this reference. Results apply to the sample(s) as submitted. This document shall not be reproduced, except in full.

This Certificate of Analysis contains the following information:

- General Comments
- Analytical Results

Additional information pertinent to this report will be found in the following separate attachments: Quality Control Report, QC Interpretive report to assist with Quality Review and Sample Receipt Notification (SRN).

Signatories

This document has been electronically signed by the authorized signatories below. Electronic signing is conducted in accordance with US FDA 21 CFR Part 11.

<i>Signatories</i>	<i>Position</i>	<i>Laboratory Department</i>
Hannah Phung	Lab Assistant	Inorganics, Calgary, Alberta
Harpreet Chawla	Team Leader - Inorganics	Inorganics, Calgary, Alberta
Patryk Wojciak	Account Manager	Inorganics, Calgary, Alberta
Shirley Li	Team Leader - Inorganics	Inorganics, Calgary, Alberta



General Comments

The analytical methods used by ALS are developed using internationally recognized reference methods (where available), such as those published by US EPA, APHA Standard Methods, ASTM, ISO, Environment Canada, BC MOE, and Ontario MOE. Refer to the ALS Quality Control Interpretive report (QCI) for applicable references and methodology summaries. Reference methods may incorporate modifications to improve performance. Where a reported less than (<) result is higher than the LOR, this may be due to primary sample extract/digestate dilution and/or insufficient sample for analysis.

Where the LOR of a reported result differs from standard LOR, this may be due to high moisture content, insufficient sample (reduced weight employed) or matrix interference.

Please refer to Quality Control Interpretive report (QCI) for information regarding Holding Time compliance.

Key : CAS Number: Chemical Abstracts Services number is a unique identifier assigned to discrete substances
 LOR: Limit of Reporting (detection limit).
 Measurement Uncertainty: The reported uncertainties in this report are expanded uncertainties calculated using a coverage factor of 2, which gives a level of confidence of approximately 95%.
 Surrogate: An analyte that is similar in behavior to target analyte(s), but that does not occur naturally in environmental samples. For applicable tests, surrogates are added to samples prior to analysis as a check on recovery.

Unit	Description
°C	degrees celsius
mg/L	milligrams per litre
pH units	pH units

>: greater than.
 <: less than.

Test results reported relate only to the samples as received by the laboratory.

UNLESS OTHERWISE STATED on SRN or QCI Report, ALL SAMPLES WERE RECEIVED IN ACCEPTABLE CONDITION.

Analytical Results

CG2517923-001

Sub-Matrix: Wastewater

(Matrix: Water)

Client sample ID: E207267 STP - (Grab pH: 7.86 Temp: 8.3C)

Client sampling date / time: 09-Dec-2025 15:30

Analyte	CAS Number	Result	LOR	Unit	Method/Lab	Prep Date	Analysis Date	QCLot
Field Tests								
pH, field	---	7.74	0.10	pH units	EF001/CG	-	11-Dec-2025	-
Temperature, field	---	9.40	0.10	°C	EF001/CG	-	11-Dec-2025	-
Physical Tests								
Solids, total suspended [TSS]	---	22.3	1.0	mg/L	E160-L/CG	-	15-Dec-2025	2386336
Anions and Nutrients								
Phosphorus, total	7723-14-0	5.71	0.200	mg/L	E372-U/CG	15-Dec-2025	16-Dec-2025	2385998
Aggregate Organics								
Carbonaceous biochemical oxygen demand [CBOD]	---	12.6	6.0	mg/L	E555/CG	-	12-Dec-2025	2383816

Please refer to the General Comments section for an explanation of any result qualifiers detected.