



DISTRICT OF INVERMERE
914 8th Avenue PO Box 339
Invermere, BC V0A 1K0
www.invermere.net



Automated Curbside Waste, Recycling & Organics Collection Program



RECYCLEBC™

For more information visit www.invermere.net

Using Your Automated Curbside Waste and Recycling Collection Program

COLLECTION SCHEDULE

Automated waste collection is more efficient than manual collection. As a result, waste collection will now take less time and will limit wildlife access to curbside waste. The time saved on the road will reduce greenhouse gas emissions from collection vehicles by 25%. Waste will continue to be collected on Tuesdays and Wednesdays only. Recycling will be collected in your area on alternating Thursdays.

To view the collection calendar and map please visit:
<https://invermere.net/operations/waste/>

RECYCLE BC

As of November the District of Invermere will be partnering with RecycleBC. First collection will be November 7 for area A and November 14 for area B

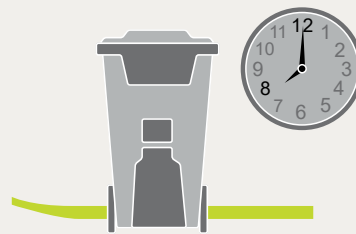
Now more items can be recycled (see our What Goes Where section) and plastic bags and bagged recyclables can no longer be accepted.



How to Use Your Cart

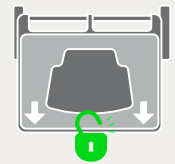
1 PARK IT

Carts should be on the street with the wheels placed against the curb or edge of the road. All carts should be out by 8am. Carts must not be placed out before 7am on your collection day.



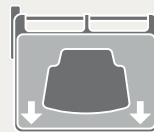
2 CLOSE IT/UNLOCK IT

The lid on your waste cart must be unlocked at the curbside and your recycling cart lid firmly shut.



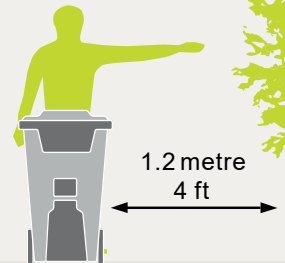
3 POINT IT

Arrows on the lid should point to centre of the road.



4 SPACE IT

Give at least 1.2 metres (4 ft) of clearance to any obstacle.



Help Our Collection Staff



DO NOT
 overfill carts or
 place additional
 waste on the lid



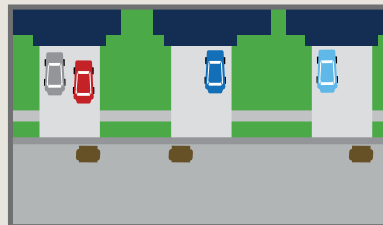
DO NOT
 put glass in the
 recycling cart



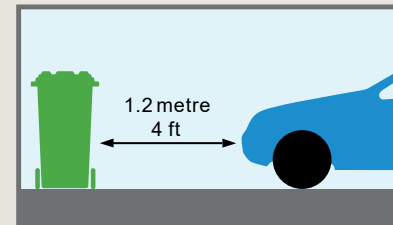
DO NOT
 put liquids or
 ash in either cart



DO NOT
 place bagged material in
 the recycling cart. Only
 loose material is accepted.



Where possible please place carts in front of your driveway and consider parking **OFF THE STREET** on collection days.



Park vehicles at least 1.2 metres (4 ft) away from carts if you cannot park off the street.

Industrial Park Transfer Station

This site is only to be used to drop off household waste. Furniture, appliances, contractor waste, and yard waste will not be accepted at this site. Only waste in residential bags that will fit through bear resistant lids will be accepted

Invermere Transfer Station

Hours: 7 days a week 8:30am - 5:30pm

Address: Industrial 1 Road, Invermere

Closed Christmas Day, New Years Day, Remembrance Day, Thanksgiving Day, and Family Day.

Hours are subject to change. For up to date hours of operation and a detailed listing of the types of waste and recycling accepted, please contact The Regional District of EastKootenay at 250 489 6900 or environmentalservicesdept@rdek.bc.ca

Columbia Valley Landfill

Please take all other waste to the Columbia Valley Landfill located at 1884 Windermere Loop Road. The Landfill is open 7 days a week 9am-6pm. Household garbage is free. For disposal costs associated with other than household waste please call the landfill at 250 489 6900 or visit rdek.bc.ca and search for the Columbia Valley Landfill User Fees



Inquiries & Contact Information

Each cart is equipped with a Radio Frequency Identification (RFID) tag that is registered to a specific residence providing an enhanced tracking system. When a cart is collected, its RFID tag is scanned by the truck to streamline customer inquiries, complaints, and compliance issues. If collection of your waste or recycling is missed please contact The Regional District of EastKootenay at 250 489 6900.

If you have an issue with a missing or damaged cart, please contact:
The District of Invermere at 250-342-9281

For more information visit:
<https://invermere.net/operations/waste/garbage>



DISTRICT OF INVERMERE
914 8th Avenue
PO Box 339
Invermere, BC V0A 1K0
www.invermere.net

WHAT GOES WHERE? PAPER & CONTAINERS



Recycle at curbside or the Recycling Transfer Station. Clean and dry paper only, empty and rinse all containers.

Paper



Newspapers, inserts, flyers



Magazines, catalogues, phone books



Moulded paper



Household paper



Paper bags and boxes



Shredded paper (contain in paper bag or box first)



Paper decorations



Boxboard boxes



Envelopes



Cardboard boxes

- 3 Greeting cards
- 3 Paper carry-out beverage trays
- 3 Paper gift wrap
- 3 Cores from paper towel and toilet tissue
- 3 Paper gift bags

Containers



Plastic bottles, jars and jugs



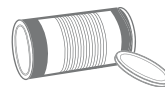
Plastic trays and containers



Caps, tops, lids and pumps



Plastic or paper cups, plates, bowls and lids



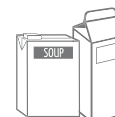
Metal cans



Spray containers (empty)



Foil wrap and containers



Cartons for soup, cream, etc.



Plastic garden pots and seedling trays

- 3 Plastic packaging for toys, batteries etc. Separate plastic from paper backing
- 3 Plastic pails less than 25L for laundry detergent, cat litter, etc.
- 3 Spiral wound cans and lids for frozen juice concentrate, chips, etc.
- 3 Plastic tubs for yogurt, margarine, etc.

NOT ACCEPTED



Hard and soft cover books



Plastic bags and overwrap



Clothing and textiles



Food, yard waste and wood

- 8 Non-paper gift wrap, foil wrap, cards or paper with glitter
- 8 Rubber bands, ribbons, bows
- 8 Padded envelopes
- 8 Bags and boxes with foil liners
- 8 Paper towels, napkins and tissues
- 8 Foil or plastic lined paper bags

NOT ACCEPTED



Plastic bags and overwrap



Electronics and appliances



Durable Products



Hazardous waste



Glass



Metal hangers, pots, pans and other scrap metal

- 8 Foam packaging
- 8 Chip or foil bags, candy wrappers
- 8 Stand-up pouches
- 8 Packaging labeled biodegradable or compostable
- 8 Wiring, metal cords, hardware
- 8 Clothing, textiles and shoes
- 8 Food and yard waste

WHAT GOES WHERE? DROP-OFF ONLY

Take these items to the Recycling Transfer Station.



Glass



Glass bottles - clear and coloured

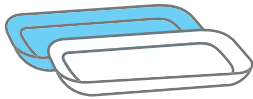


Glass jars - clear and coloured

NOT ACCEPTED

- 8 Drinking glasses, dishes, cookware
- 8 Window glass, mirrors
- 8 Ceramic products
- 8 Light bulbs or light fixtures

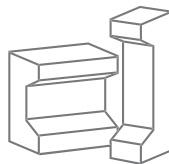
Foam Packaging



Foam meat trays
(remove absorbent pad)



Foam containers
and cups



Foam cushion packaging used
to protect electronics etc.

NOT ACCEPTED

- 8 Blue or pink foam insulation, packing chips and peanuts
- 8 Squishy or flexible foam, foam noodles

Want to recycle something else?

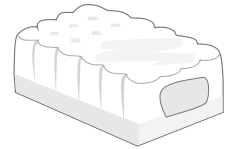
Search Recycle BC's Waste Wizard or download a full material list at RecycleBC.ca.

To recycle items that are not packaging, packaging-like products, single-use items, or paper, contact the Recycling Council of BC (RCBC) at RCBC.ca.

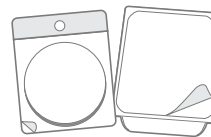
Flexible Plastics



Plastic bags



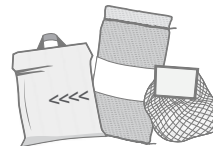
Outer bags and overwraps



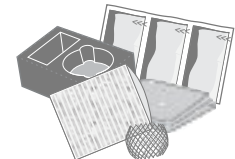
Flexible packaging
with plastic seal



Zipper-lock and
stand-up pouches



Woven plastic bags



Protective and squishy
cushion packaging



Crinkly wrappers and bags

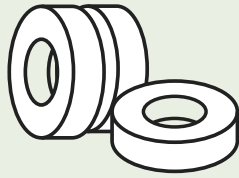
- 3 Bags for groceries, produce, newspapers
- 3 Overwrap for diapers, feminine hygiene products, paper towels, soft drink flats

NOT ACCEPTED

- 8 Crinkly Wrap for Tea, Floral Arrangements, etc.
- 8 Garbage Bags
- 8 Plastic Squeeze Tubes, Plastic-lined Paper
- 8 Paper-lined Plastic, Plastic Strapping
- 8 6-pack Rings, Biodegradable Plastic, Vinyl

Exclude batteries; medical sharps; bleach or aerosol containers with any contents remaining; containers with the words **COMBUSTIBLE**, **FLAMMABLE** or **VERYFLAMMABLE** on them (except cosmetic and beauty product containers); compressed gas cylinders, for example used propane cylinders; containers for paint, motor oil, vehicle lubricants, or antifreeze; or containers for pesticides with the words **DANGER**, **WARNING**, or **POISON**, and precautionary octagon or diamond symbols with skull and cross bones.

Provincial Product Stewardship Programs



TIRES

Columbia Valley Landfill,
Canadian Tire, K5 Mechanical,
Mister Tire, OK Tire, &
Walker's Repair
www.tsbc.ca



LIGHT BULBS

Invermere Home Hardware
www.productcare.org



OIL, FILTERS & ANTI-FREEZE

Castle Fuels & Walker's Repair Centre
www.bcusedoil.com



BATTERIES & CELL-PHONES

The Source, Invermere
Home Hardware & Rona
www.call2recycle.ca



PAINT

Invermere Home
Hardware & Rona
www.productcare.org



MEDICATIONS

Lambert-Kipp Pharmacy, &
Pharmasave
www.healthsteward.ca



SMOKE & CO2 ALARMS

Invermere Fire Department
www.productcare.org



SMALL APPLIANCES

Invermere Bottle Depot
www.return-it.ca



ELECTRONICS

Invermere Bottle Depot
www.return-it.ca

For an extensive list of accepted materials, please visit:

recyclebc.ca/what-can-i-recycle/

Curbside Waste

Unfortunately not all waste that is produced in the average household can be recycled. This is where the curbside waste collection comes in. Some examples would include: food scraps (if you don't compost); personal hygiene products; paper towels; tissues and napkins, diapers and sanitary products; bagged animal waste; etc.



New Program: Curbside Organics Collection

From June 2025, the District of Invermere is joining communities across BC and Canada by adding organics waste to the curbside waste collection program.

Compostable kitchen scraps and yard waste currently make up 30% of Invermere's regional landfill waste that we can divert to the new local composting facility.

This will produce Class B compost soil that will be used by the Regional District of East Kootenay.

Composting organics is the single most effective action we can take to reduce greenhouse gases and pollutants from the residential waste stream.



The new bear-resistant organics cart has a reinforced lid secured by clips.

How Will it Work?



May 2025:

You receive a new bear-resistant curbside organics cart and calendar.



June 2025:

Weekly pickup of organic waste begins.



September 2025:

Garbage and recycling shift to a bi-weekly collection schedule.

Residents need to remove the metal clips from the cart once set out for collection, or the cart will not be emptied.

Choose Your Own Kitchen Catcher

In place of providing a kitchen catcher for food scraps, the District will deduct \$15 from your first utility bill so you can choose a container that best fits your kitchen. Local stores sell different styles or you can repurpose another container.

Frequently Asked Questions:

Will this cost more?

Almost half the set-up cost is grant-funded, the remainder from the District's Environmental Fund. Extra curbside collection will increase utilities by less than \$5 per month. Landfill transportation costs will decrease and the landfill lifespan will increase.

Will it attract wildlife?

Currently food waste goes in regular garbage carts. Your new bear-resistant organics cart has a reinforced lid secured by clips, already used successfully in Golden, Squamish and on Vancouver Island. Carts should be stored indoors where possible.

Will it smell?

Food scraps may decompose in the new organics bin just as in the current garbage. Combining with yard waste and cardboard helps reduce moisture and odours. Weekly collection will help reduce smells.

I already compost...

Thank you for already reducing landfill waste! Around 11% of our landfill waste is organics that are not easy to compost at home, such as meat, dairy, baked goods, food-soiled paper products and wood utensils. They are all accepted in the new program.

Compostable Items

FOOD WASTE Cooking oils, fats and grease can be soaked in a paper towel or chilled to harden before going in the bin



Food scraps (peels, shells, meat, fats, leftovers)



Bones



Sauces, spreads, condiments



Dairy products



Tea bags, coffee grounds & filters

YARD WASTE



Twigs, sticks & small branches
(Maximum 1" diameter, 2 ft long)



Grass clippings & leaves



Flowers, bulbs, seeds, weeds



Cones, berries, fruit



Hay, straw, coconut planter liners

PET PRODUCTS



Kitty Litter



Animal bedding



Pet fur, hair, feathers



Pet food and treats

FOOD-SOILED PAPER PRODUCTS



Paper bags, napkins & towels



Pizza boxes



Newspapers, flyers, paper packets



Wood shavings



Wood/Bamboo utensils, sticks and dishes, toothpicks

OTHER

Prohibited Items



Ashes



Pet waste
(other than kitty litter)



Fruit & vegetable stickers, plastic bin liners, rubber bands, twist ties

If you can't determine if an item is compostable:

- 1) Review acceptable items at invermere.net/organics
- 2) Email environmentalplanner@invermere.net for clarification
- 3) Put it in your garbage bin – to avoid contamination, when in doubt, toss it out!

For more info:

invermere.net/organics

Questions or Comments:

environmentalplanner@invermere.net



Utility Billing and Payment

Utilities are billed semiannually with billing periods from April 1st- September 30th and October 1st- March 31st. Payment of utility bills can be made through online banking, please remember it can take up to 3 days to process your payment. Make sure you give yourself enough time for the payment to be processed to avoid penalties. Alternately payments can be made at the District of Invermere municipal office by cash, cheque or debit.

The Pre-Authorized Payment Plan is an easy way to make your District of Invermere payments—it eliminates cheque writing and postage costs. Please note your account must be in good standing to begin this program. Simply fill in the Pre-Authorized Payment Plan form and return to our office with a “VOID” cheque to enroll. On the form you can select either variable, to have the full amount of your bill withdrawn from your account on the due date or you can select fixed. If selecting fixed, please enter the amount you would like withdrawn from your bank account each month. This equal payment will be withdrawn on the 15th of each month. When your bill is issued, your credit that you built with the monthly installments will be applied to your bill. If there is a balance owing on the bill, this will be automatically withdrawn from your bank account on the due date to keep you in good standing. For further information on this program, please contact the District of Invermere office by email at info@invermere.net or by phone at 250-342-9281.



Community Bins

Don't have anywhere to store attractants between collection days? The District provides commercial bear-proof bins for public use that are accessible at:

Industrial Park Transfer Station
1101 Industrial Road 1, Athalmer, BC
(Next to the Public Works Yard)



As residents in wildlife habitat it is our responsibility to prevent conflict between people, bears and other wildlife. Keeping waste stored indoors until collection day and securing wildlife attractants is the MOST

EFFECTIVE way to keep people safe, prevent property damage, and avoid the unnecessary killing of bears that come into conflict with people.

It is everyone's responsibility in BC to prevent attracting dangerous wildlife to their property (BC Wildlife Act, Section 33.1). For more information on keeping wildlife wild and communities safe, visit www.wildsafebc.com

2025 CURBSIDE COLLECTION SCHEDULE



- Zone A - garbage
- Zone B - garbage
- Zone A - recycling
- Zone B - recycling
- Zone A - organics
- Zone B - organics

JANUARY

SUN	MON	TUE	WED	THU	FRI	SAT
			1	2	3	4
5	6	7	8	9	10	11
12	13	14	15	16	17	18
19	20	21	22	23	24	25
26	27	28	29	30	31	

FEBRUARY

SUN	MON	TUE	WED	THU	FRI	SAT
						1
2	3	4	5	6	7	8
9	10	11	12	13	14	15
16	17	18	19	20	21	22
23	24	25	26	27	28	

MARCH

SUN	MON	TUE	WED	THU	FRI	SAT
						1
2	3	4	5	6	7	8
9	10	11	12	13	14	15
16	17	18	19	20	21	22
23	24	25	26	27	28	29
30	31					

APRIL

SUN	MON	TUE	WED	THU	FRI	SAT
		1	2	3	4	5
6	7	8	9	10	11	12
13	14	15	16	17	18	19
20	21	22	23	24	25	26
27	28	29	30			

MAY

SUN	MON	TUE	WED	THU	FRI	SAT
				1	2	3
4	5	6	7	8	9	10
11	12	13	14	15	16	17
18	19	20	21	22	23	24
25	26	27	28	29	30	31

JUNE

SUN	MON	TUE	WED	THU	FRI	SAT
1	2	3	4	5	6	7
8	9	10	11	12	13	14
15	16	17	18	19	20	21
22	23	24	25	26	27	28
29	30					

Organics collection begins

No collection 1st July - stat holiday Zone A + B organics: 30th June

JULY

SUN	MON	TUE	WED	THU	FRI	SAT
		1	2	3	4	5
6	7	8	9	10	11	12
13	14	15	16	17	18	19
20	21	22	23	24	25	26
27	28	29	30	31		

AUGUST

SUN	MON	TUE	WED	THU	FRI	SAT
					1	2
3	4	5	6	7	8	9
10	11	12	13	14	15	16
17	18	19	20	21	22	23
24	25	26	27	28	29	30
31						

No collection 4th - stat holiday
Zone B organics: 6th Zone A + B garbage 3rd

No collection 1st - stat holiday Zone A organics: 2nd Zone A + B garbage 3rd

SEPTEMBER

SUN	MON	TUE	WED	THU	FRI	SAT
	1	2	3	4	5	6
7	8	9	10	11	12	13
14	15	16	17	18	19	20
21	22	23	24	25	26	27
28	29	30				

No collection 30th - stat holiday Zone A organics: 29th

OCTOBER

SUN	MON	TUE	WED	THU	FRI	SAT
			1	2	3	4
5	6	7	8	9	10	11
12	13	14	15	16	17	18
19	20	21	22	23	24	25
26	27	28	29	30	31	

Garbage collection goes bi-weekly

NOVEMBER

SUN	MON	TUE	WED	THU	FRI	SAT
						1
2	3	4	5	6	7	8
9	10	11	12	13	14	15
16	17	18	19	20	21	22
23	24	25	26	27	28	29
30						

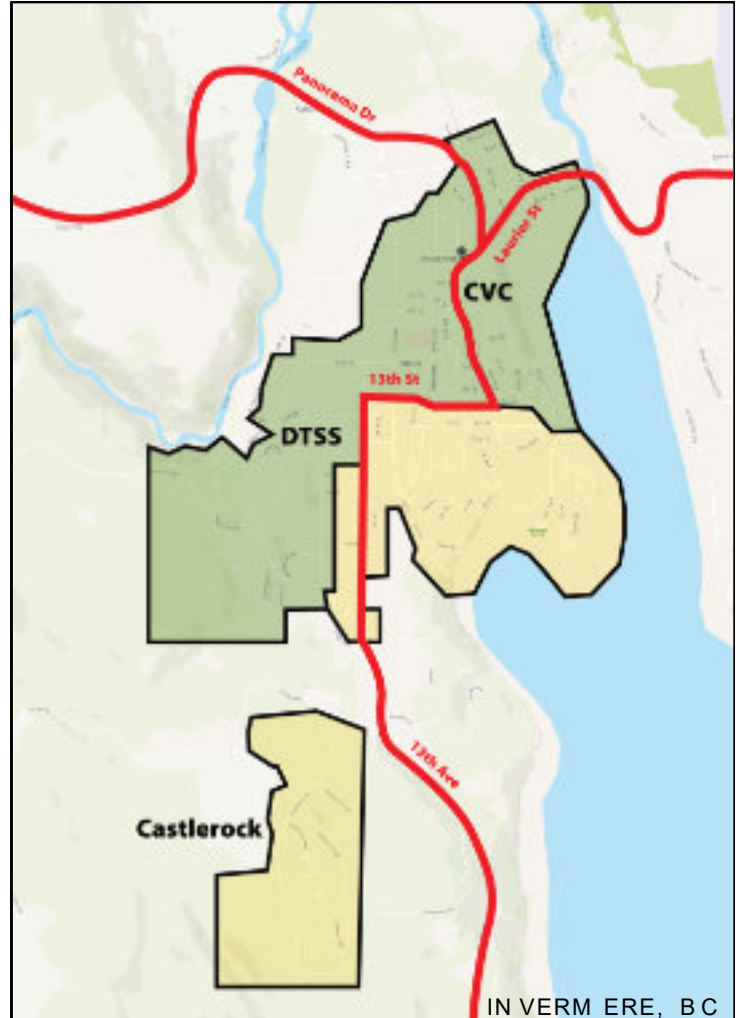
No collection 11th - stat holiday Zone A organics: 10th

DECEMBER

SUN	MON	TUE	WED	THU	FRI	SAT
	1	2	3	4	5	6
7	8	9	10	11	12	13
14	15	16	17	18	19	20
21	22	23	24	25	26	27
28	29	30	31	1	2	

No collection 25th, 26th & 1st - stat holidays
Zone A & B organics: 23rd, 24th
Zone B garbage & recycling: 23rd & 24th
Zone B organics: 29th
Zone A garbage & recycling: 31st & 2nd

CURBSIDE COLLECTION ZONES



ZONE A ZONE B

For a copy of Zone A or Zone B only schedules,
please visit
www.invermere.net/operations/waste
or scan the QR code

