

**DISTRICT OF INVERMERE**

**BYLAW NO. 1665**

A bylaw to amend the fee structures for the use of property held by the municipality for pleasure, recreation or community uses.

**WHEREAS** the *Community Charter* empowers Council to regulate, prohibit, impose requirements, and impose fees in relation to public places and buildings and other structures;

**WHEREAS** it is deemed desirable and expedient to amend these fees;

**NOW THEREFORE** the Council of the District of Invermere, in an open meeting assembled, enacts as follows:

1. This Bylaw shall be cited as "Parks and Facilities Fees Amendment Bylaw No. 1665, 2024."
2. Bylaw No. 1645, 2023 being "Parks and Facilities Amendment Bylaw No. 1645, 2023" is hereby repealed and the attached is substituted as Schedule "A" to "Parks and Facilities Regulation Bylaw No. 1559, 2019".

Read a First Time this 10<sup>th</sup> day of December, 2024.

Read a Second Time this 10<sup>th</sup> day of December, 2024.

Read a Third Time this 10<sup>th</sup> day of December, 2024.

**ADOPTED** this \_\_\_\_\_ day of \_\_\_\_\_, 2025.

\_\_\_\_\_  
MAYOR

\_\_\_\_\_  
CHIEF ADMINISTRATIVE OFFICER

Certified a true copy of Bylaw No. 1665, 2024  
this \_\_\_\_\_ day of \_\_\_\_\_, \_\_\_\_\_.

\_\_\_\_\_  
Corporate Officer

**SCHEDULE "A"**  
**FEES AND CHARGES**

**1. COLUMBIA VALLEY CENTRE**

**a. *Private/Commercial***

<b>CLASSIFICATION</b>	<b>2025-2027</b>
Weekend package (from 5:00 pm Friday to noon Sunday)	\$1,270
Full hall, full day <sup>1</sup>	\$735
Full hall, per hour <sup>1</sup>	\$125
Half hall, full day <sup>1</sup>	\$410
Half hall, per hour <sup>1</sup>	\$70
Kitchen only, full day	\$285
Kitchen only, per hour	\$50

<sup>1</sup> Hall rental includes kitchen access

Note: propane appliances in kitchen require propane fee

**b. *Registered not-for-profit/Community Groups\****

*\*Community group or individual offering a service to the community at very low rate or free*

<b>CLASSIFICATION</b>	<b>2025-2027</b>
Full hall, full day <sup>1</sup>	\$250
Full hall, per hour <sup>1</sup>	\$40
Half hall, full day <sup>1</sup>	\$185
Half hall, per hour <sup>1</sup>	\$30
Kitchen only, full day	\$130
Kitchen only, per hour	\$20

<sup>1</sup> Hall rental includes kitchen access

Note: propane appliances in kitchen require propane fee

**c. *Additional Fees***

<b>CLASSIFICATION</b>	<b>2025-2027</b>
Damage/clean-up deposit (weekend package)	\$1,000
Damage/clean-up deposit (excluding weekend package)	\$500
Non-emergency call out	As per current DOI charge-out rates policy

**d. Add-ons**

<b>CLASSIFICATION</b>	<b>2025-2027</b>
Rooftop Patio, per day	\$245
Rooftop Patio, per hour	\$40
Rooftop Patio – optional set-up by staff	\$105
Propane (for kitchen appliances)	\$70
Inside table/chair set-up/removal by staff – (setup diagram to be supplied by renter) <sup>2</sup>	\$590
8' folding banquet tables (min. order 10)	\$60
Retractable theatre seats <sup>2</sup>	\$290
Theatre curtains (for performance only) <sup>2</sup>	\$70
Aluminum executive staging <sup>2</sup>	\$255
Pipe & drape <sup>2</sup>	\$100

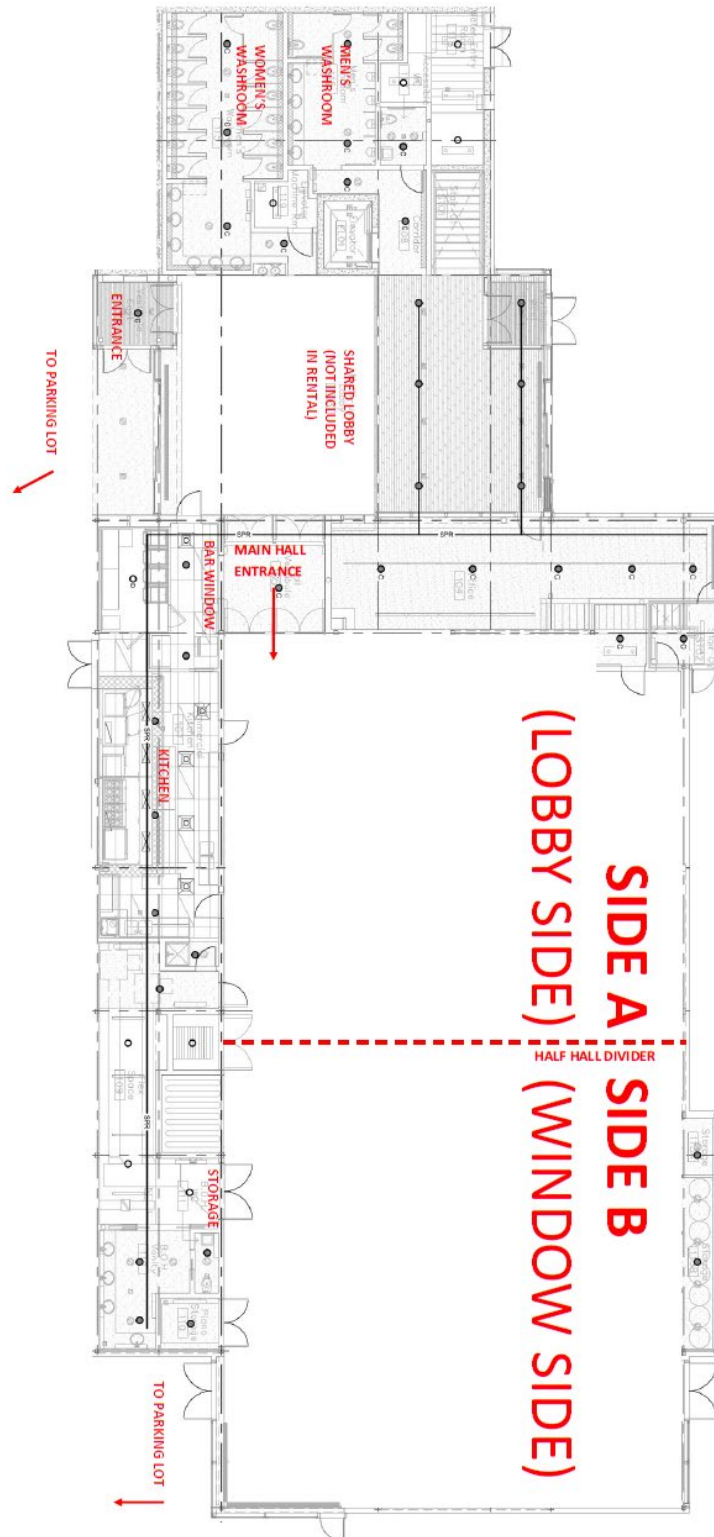
<sup>2</sup> Rental, installation and removal by District staff included in price

**e. Audio/Video Offerings**

<b>CLASSIFICATION</b>	<b>2025-2027</b>
Dedicated technician – 4-hour min. charge, per event	\$380
Dedicated technician, additional time, per hour	\$95
Audio (microphones, PA system), per day <sup>3</sup>	\$70
Video (screen, projector), per day <sup>3</sup>	\$70
Lighting (theatrical), per day <sup>3</sup>	\$70

<sup>3</sup> Operated by District of Invermere approved technician at hourly rate

**f. Columbia Valley Centre layout (for guidance purposes)**



**2. CPR LODGE:**

***a. Private/Commercial***

<b>CLASSIFICATION</b>	<b>2025-2027</b>
Private/commercial – weekend package (from noon Friday to noon Sunday)	\$530
Private/commercial - Friday to Sunday, per day <sup>4</sup>	\$300
Private/commercial - Monday to Thursday, per day	\$215
Private/commercial - Monday to Thursday, per hour	\$35
Damage/clean-up deposit	\$500
Non-emergency call out	As per current DOI charge-out rates policy

<sup>4</sup> CPR Lodge cannot be rented hourly Friday to Sunday under Private/Commercial classification

***b. Registered not-for-profit/Community Groups\****

*\*Community group or individual offering a service to the community at very low rate or free*

<b>CLASSIFICATION</b>	<b>2025-2027</b>
Not-for-profit/community, per day	\$155
Not-for-profit/community, per hour	\$25
Damage/clean-up deposit	\$500
Non-emergency call out	As per current DOI charge-out rates policy

**3. MNAP CONCESSION:**

***a. Private/Commercial***

<b>CLASSIFICATION</b>	<b>2025-2027</b>
Rental, per day	\$60
Damage/clean-up deposit	\$100
Non-emergency call out	As per current DOI charge-out rates policy

**b. Registered not-for-profit/Community Groups\***

*\*Community group or individual offering a service to the community at very low rate or free*

CLASSIFICATION	2025-2027
Rental, per day	\$35
Damage/clean-up deposit	\$100
Non-emergency call out	As per current DOI charge-out rates policy

**4. PARKS/GREEN SPACE (including, but not limited to Mount Nelson Athletic Park, Rotary Ball Park, Skatepark, Ball Diamonds, Play Fields, Tunnacliffe Heights Park, Pynelogs green space, Pothole Park, Westside Park, Lions Park, Castlerock Park, etc.):**

SPORTS	2025-2027
Adult sports, per game, up to 2 hours maximum	<i>free</i>
Adult sports, per day	\$35
Adult sports, per season	\$590
For profit sports camps, per day	\$60
School district/local youth leagues	<i>free</i>
Fitness classes, up to 2 hours max.	<i>free</i>
Fitness classes, per day	\$60
Damage/clean-up deposit	\$100
Non-emergency call out	As per current DOI charge-out rates policy

EVENTS/FUNCTIONS	2025-2027
For profit, per hour, up to 2 hours max.	<i>free</i>
For profit, per day	\$355
Not-for-profit, per hour, up to 2 hours max.	<i>free</i>
Not-for-profit, per day	\$120
Damage/clean-up deposit	\$100
Non-emergency call out	As per current DOI charge-out rates policy

**5. EQUIPMENT RENTAL**

	<b>2025-2027</b>
Mobile Vending Trailer, non-profit, per event <sup>5 6</sup>	\$110
Mobile Vending Trailer, private, per event <sup>5 6</sup>	\$225
Mobile Vending Trailer - damage/clean up deposit	\$500
Outdoor Movie Theatre <sup>5</sup>	\$2,250
Outdoor Movie Theatre – damage/clean-up deposit	\$500
SL75 Stageline Mobile Stage <sup>5</sup>	\$3,400
SL75 Stageline Mobile Stage - damage/clean-up deposit	\$1,000

<sup>5</sup> Delivery and pick up (if applicable) will be billed at actual costs.

<sup>6</sup> Maximum rental time 72 hours

All rentals (including free usage) MUST provide appropriate liability coverage and damage deposit in advance of the usage date/s. All fees must be paid in full in advance of the usage date/s.