



DISTRICT OF INVERMERE  
914 8th Avenue PO Box 339  
Invermere, BC V0A 1K0  
[www.invermere.net](http://www.invermere.net)



# Automated Curbside Waste and Recycling Collection Program



**RECYCLEBC™**

For more information visit [www.invermere.net](http://www.invermere.net)

# Using Your Automated Curbside Waste and Recycling Collection Program

## COLLECTION SCHEDULE

Automated waste collection is more efficient than manual collection. As a result, waste collection will now take less time and will limit wildlife access to curbside waste. The time saved on the road will reduce greenhouse gas emissions from collection vehicles by 25%. Waste will continue to be collected on Tuesdays and Wednesdays only. Recycling will be collected in your area on alternating Thursdays.

To view the collection calendar and map please visit:  
<https://invermere.net/operations/waste/>

## RECYCLE BC

As of November the District of Invermere will be partnering with Recycle BC. First collection will be November 7 for area A and November 14 for area B

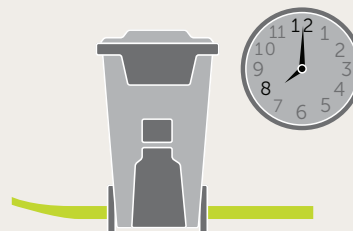
Now more items can be recycled (see our What Goes Where section) and **plastic bags and bagged recyclables can no longer be accepted.**



## How to Use Your Cart

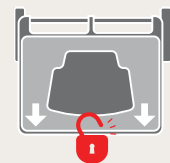
### 1 PARK IT

Carts should be on the street with the wheels placed against the curb or edge of the road. **All carts should be out by 8am.** Carts must not be placed out before 7am on your collection day.



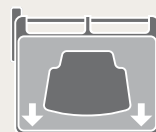
### 2 CLOSE IT/LOCK IT

The lid on your waste cart must be locked at the curbside and your recycling cart lid firmly shut.



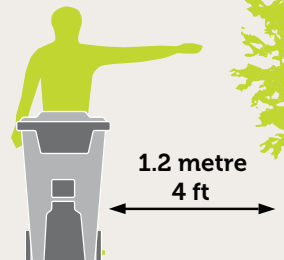
### 3 POINT IT

Arrows on the lid should point to centre of the road.



### 4 SPACE IT

Give at least 1.2 metres (4 ft) of clearance to any obstacle.



## Help Our Collection Staff



**DO NOT**  
overfill carts or place additional waste on the lid



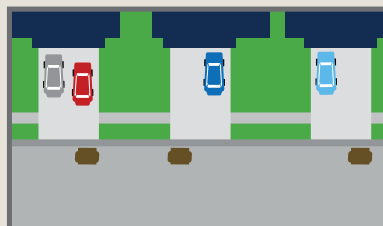
**DO NOT**  
put glass in the recycling cart



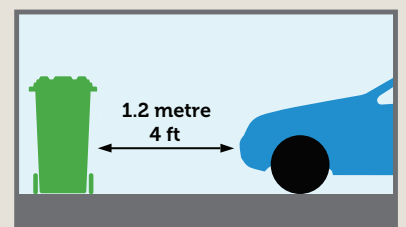
**DO NOT**  
put liquids or ash in either cart



**DO NOT**  
place bagged material in the recycling cart. Only loose material is accepted.



Where possible please place carts in front of your driveway and consider parking **OFF THE STREET** on collection days.



Park vehicles at least 1.2 meters (4 ft) away from carts if you cannot park off the street.

## Industrial Park Transfer Station

This site is only to be used to drop off household waste. Furniture, appliances, contractor waste, and yard waste will not be accepted at this site. Only waste in residential bags that will fit through bear resistant lids will be accepted

## Invermere Transfer Station

**Hours:** 7 days a week 8:30am - 5:30pm

**Address:** Industrial 1 Road, Invermere

Closed Christmas Day, New Years Day, Remembrance Day, Thanksgiving Day, and Family Day.

Hours are subject to change. For up to date hours of operation and a detailed listing of the types of waste and recycling accepted, please contact The Regional District of East Kootenay at 250 489 6900 or [environmentalservicesdept@rdek.bc.ca](mailto:environmentalservicesdept@rdek.bc.ca)

## Columbia Valley Landfill

Please take all other waste to the Columbia Valley Landfill located at 1884 Windermere Loop Road. The Landfill is open 7 days a week 9am-6pm. Household garbage is free. For disposal costs associated with other than household waste please call the landfill at 250 489 6900 or visit [rdek.bc.ca](http://rdek.bc.ca) and search for the Columbia Valley Landfill User Fees



## Inquiries & Contact Information

Each cart is equipped with a Radio Frequency Identification (RFID) tag that is registered to a specific residence providing an enhanced tracking system. When a cart is collected, its RFID tag is scanned by the truck to streamline customer inquiries, complaints, and compliance issues. If collection of your waste or recycling is missed please contact The Regional District of East Kootenay at 250 489 6900.

If you have an issue with a missing or damaged cart, please contact:

**The District of Invermere at 250-342-9281**

For more information visit:

<https://invermere.net/operations/waste/garbage>



**DISTRICT OF INVERMERE**  
914 8th Avenue  
PO Box 339  
Invermere, BC VOA 1K0  
[www.invermere.net](http://www.invermere.net)

For more information visit [www.invermere.net](http://www.invermere.net)





RECYCLEBC

# WHAT GOES WHERE? PAPER & CONTAINERS

Recycle at curbside or the Recycling Transfer Station. Clean and dry paper only, empty and rinse all containers.

## Paper



Newspapers, inserts, flyers



Magazines, catalogues, phone books



Moulded paper



Household paper



Paper bags and boxes



Shredded paper (contain in paper bag or box first)



Paper decorations



Boxboard boxes



Envelopes



Cardboard boxes

- ✓ Greeting cards
- ✓ Paper carry-out beverage trays
- ✓ Paper gift wrap
- ✓ Cores from paper towel and toilet tissue
- ✓ Paper gift bags

## Containers



Plastic bottles, jars and jugs



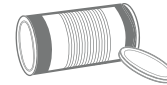
Plastic trays and containers



Caps, tops, lids and pumps



Plastic or paper cups, plates, bowls and lids



Metal cans



Spray containers (empty)



Foil wrap and containers



Cartons for soup, cream, etc.



Plastic garden pots and seedling trays

- ✓ Plastic packaging for toys, batteries etc. Separate plastic from paper backing
- ✓ Plastic pails less than 25L for laundry detergent, cat litter, etc.
- ✓ Spiral wound cans and lids for frozen juice concentrate, chips, etc.
- ✓ Plastic tubs for yogurt, margarine, etc.

## NOT ACCEPTED



Hard and soft cover books



Plastic bags and overwrap



Clothing and textiles



Food, yard waste and wood

- ✗ Non-paper gift wrap, foil wrap, cards or paper with glitter
- ✗ Rubber bands, ribbons, bows
- ✗ Padded envelopes
- ✗ Bags and boxes with foil liners
- ✗ Paper towels, napkins and tissues
- ✗ Foil or plastic lined paper bags

## NOT ACCEPTED



Plastic bags and overwrap



Electronics and appliances



Durable Products



Hazardous waste



Glass



Metal hangers, pots, pans and other scrap metal

- ✗ Foam packaging
- ✗ Chip or foil bags, candy wrappers
- ✗ Stand-up pouches
- ✗ Packaging labeled biodegradable or compostable
- ✗ Wiring, metal cords, hardware
- ✗ Clothing, textiles and shoes
- ✗ Food and yard waste

# WHAT GOES WHERE? DROP-OFF ONLY

Take these items to the Recycling Transfer Station.

## Glass



Glass bottles - clear and coloured

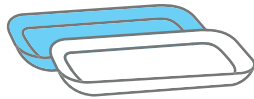


Glass jars - clear and coloured

### NOT ACCEPTED

- ✗ Drinking glasses, dishes, cookware
- ✗ Window glass, mirrors
- ✗ Ceramic products
- ✗ Light bulbs or light fixtures

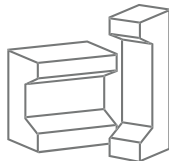
## Foam Packaging



Foam meat trays  
(remove absorbent pad)



Foam containers  
and cups



Foam cushion packaging used  
to protect electronics etc.

### NOT ACCEPTED

- ✗ Blue or pink foam insulation, packing chips and peanuts
- ✗ Squishy or flexible foam, foam noodles

### Want to recycle something else?

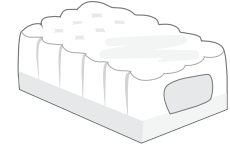
Search Recycle BC's Waste Wizard or download a full material list at [RecycleBC.ca](http://RecycleBC.ca).

To recycle items that are not packaging, packaging-like products, single-use items, or paper, contact the Recycling Council of BC (RCBC) at [RCBC.ca](http://RCBC.ca).

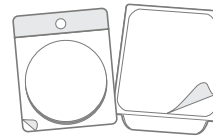
## Flexible Plastics



Plastic bags



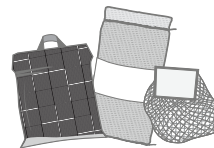
Outer bags and overwraps



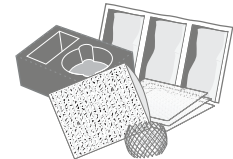
Flexible packaging  
with plastic seal



Zipper-lock and  
stand-up pouches



Woven plastic bags



Protective and squishy  
cushion packaging



Crinkly wrappers and bags

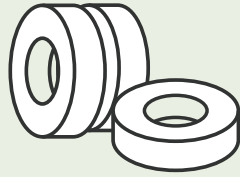
- ✓ Bags for groceries, produce, newspapers
- ✓ Overwrap for diapers, feminine hygiene products, paper towels, soft drink flats

### NOT ACCEPTED

- ✗ Crinkly Wrap for Tea, Floral Arrangements, etc.
- ✗ Garbage Bags
- ✗ Plastic Squeeze Tubes, Plastic-lined Paper
- ✗ Paper-lined Plastic, Plastic Strapping
- ✗ 6-pack Rings, Biodegradable Plastic, Vinyl

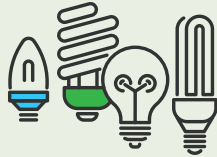
Exclude batteries; medical sharps; bleach or aerosol containers with any contents remaining; containers with the words **COMBUSTIBLE**, **FLAMMABLE** or **VERY FLAMMABLE** on them (except cosmetic and beauty product containers); compressed gas cylinders, for example used propane cylinders; containers for paint, motor oil, vehicle lubricants, or antifreeze; or containers for pesticides with the words **DANGER**, **WARNING**, or **POISON**, and precautionary octagon or diamond symbols with skull and cross bones.

# Provincial Product Stewardship Programs



## TIRES

Columbia Valley Landfill,  
Canadian Tire, K5 Mechanical,  
Mister Tire, OK Tire, &  
Walker's Repair  
[www.tsbc.ca](http://www.tsbc.ca)



## LIGHT BULBS

Invermere Home Hardware  
[www.productcare.org](http://www.productcare.org)



## OIL, FILTERS & ANTI-FREEZE

Castle Fuels & Walker's Repair Centre  
[www.bcusedoil.com](http://www.bcusedoil.com)



## BATTERIES & CELL-PHONES

The Source, Invermere Home Hardware & Rona  
[www.call2recycle.ca](http://www.call2recycle.ca)



## PAINT

Invermere Home Hardware & Rona  
[www.productcare.org](http://www.productcare.org)



## MEDICATIONS

Lambert-Kipp Pharmacy, & Pharmasave  
[www.healthsteward.ca](http://www.healthsteward.ca)



## SMOKE & CO2 ALARMS

Invermere Fire Department  
[www.productcare.org](http://www.productcare.org)



## SMALL APPLIANCES

Invermere Bottle Depot  
[www.return-it.ca](http://www.return-it.ca)



## ELECTRONICS

Invermere Bottle Depot  
[www.return-it.ca](http://www.return-it.ca)

*For an extensive list of accepted materials, please visit:*

[recyclebc.ca/what-can-i-recycle/](http://recyclebc.ca/what-can-i-recycle/)

## Curbside Waste

Unfortunately not all waste that is produced in the average household can be recycled. This is where the curbside waste collection comes in. Some examples would include: food scraps (if you don't compost); personal hygiene products; paper towels; tissues and napkins, diapers and sanitary products; bagged animal waste; etc.

For more information visit [www.invermere.net](http://www.invermere.net)



## Utility Billing and Payment

Utilities are billed semiannually with billing periods from April 1st - September 30th and October 1st - March 31st. Payment of utility bills can be made through online banking, please remember it can take up to 3 days to process your payment. Make sure you give yourself enough time for the payment to be processed to avoid penalties. Alternately payments can be made at the District of Invermere municipal office by cash, cheque or debit.

The Pre-Authorized Payment Plan is an easy way to make your District of Invermere payments—it eliminates cheque writing and postage costs. Please note your account must be in good standing to begin this program. Simply fill in the Pre-Authorized Payment Plan form and return to our office with a "VOID" cheque to enroll. On the form you can select either variable, to have the full amount of your bill withdrawn from your account on the due date or you can select fixed. If selecting fixed, please enter the amount you would like withdrawn from your bank account each month. This equal payment will be withdrawn on the 15th of each month. When your bill is issued, your credit that you built with the monthly installments will be applied to your bill. If there is a balance owing on the bill, this will be automatically withdrawn from your bank account on the due date to keep you in good standing. For further information on this program, please contact the District of Invermere office by email at [info@invermere.net](mailto:info@invermere.net) or by phone at 250-342-9281.



## Community Bins

Don't have anywhere to store attractants between collection days? The District provides commercial bear-proof bins for public use that are accessible at:

Industrial Park Transfer Station  
1101 Industrial Road 1, Athalmer, BC  
(Next to the Public Works Yard)



As residents in wildlife habitat it is our responsibility to prevent conflict between people, bears and other wildlife. Keeping waste stored indoors until collection day and securing wildlife attractants is the MOST

EFFECTIVE way to keep people safe, prevent property damage, and avoid the unnecessary killing of bears that come into conflict with people.

It is everyone's responsibility in BC to prevent attracting dangerous wildlife to their property (BC Wildlife Act, Section 33.1). For more information on keeping wildlife wild and communities safe, visit [www.wildsafebc.com](http://www.wildsafebc.com)



# Calendar

**JANUARY 2025**

SU	MO	TU	WE	TH	FR	SA
			1	A♻️	3	4
5	6	A B B♻️			10	11
12	13	A B A♻️			17	18
19	20	A B B♻️			24	25
26	27	A B A♻️			31	

**FEBRUARY 2025**

SU	MO	TU	WE	TH	FR	SA
						1
2	3	A B B♻️			7	8
9	10	A B A♻️			14	15
16	17	A B B♻️			21	22
23	24	A B A♻️			28	

**MARCH 2025**

SU	MO	TU	WE	TH	FR	SA
						1
2	3	A B B♻️			7	8
9	10	A B A♻️			14	15
16	17	A B B♻️			21	22
23	24	A B A♻️			28	29
30	31					

**APRIL 2025**

SU	MO	TU	WE	TH	FR	SA
						1
		A B B♻️			4	5
6	7	A B A♻️			11	12
13	14	A B B♻️			18	19
20	21	A B A♻️			25	26
27	28	A B				

**MAY 2025**

SU	MO	TU	WE	TH	FR	SA
						1
				B♻️	2	3
4	5	A B A♻️			9	10
11	12	A B B♻️			16	17
18	19	A B A♻️			23	24
25	26	A B B♻️			30	31

**JUNE 2025**

SU	MO	TU	WE	TH	FR	SA
1	2	A B A♻️			6	7
8	9	A B B♻️			13	14
15	16	A B A♻️			20	21
22	23	A B B♻️			27	28
29	A					

**JULY 2025**

SU	MO	TU	WE	TH	FR	SA
						1
			B A♻️		4	5
6	7	A B B♻️			11	12
13	14	A B A♻️			18	19
20	21	A B B♻️			25	26
27	28	A B A♻️				

**AUGUST 2025**

SU	MO	TU	WE	TH	FR	SA
						1
						2
3	4	A B B♻️			8	9
10	11	A B A♻️			15	16
17	18	A B B♻️			22	23
24	25	A B A♻️			29	30
31						

**SEPTEMBER 2025**

SU	MO	TU	WE	TH	FR	SA
						1
			A B B♻️		5	6
7	8	A B A♻️			12	13
14	15	A B B♻️			19	20
21	22	A B A♻️			26	27
28	29	A				

**OCTOBER 2025**

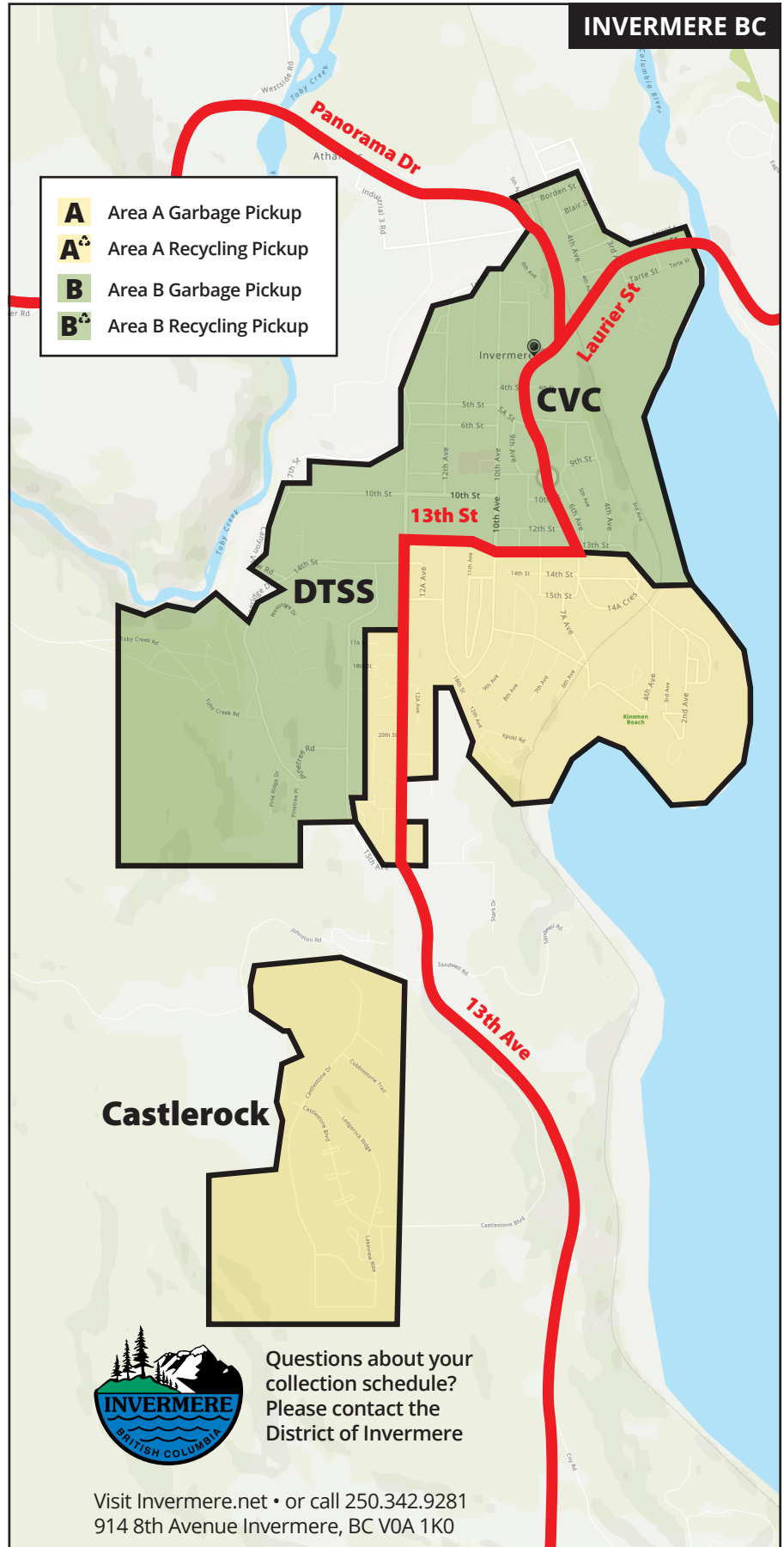
SU	MO	TU	WE	TH	FR	SA
						1
			B B♻️		3	4
5	6	A B A♻️			10	11
12	13	A B B♻️			17	18
19	20	A B A♻️			24	25
26	27	A B B♻️			31	

**NOVEMBER 2025**

SU	MO	TU	WE	TH	FR	SA
						1
2	3	A B A♻️			7	8
9	A	11	B B♻️		14	15
16	17	A B A♻️			21	22
23	24	A B B♻️			28	29
30						

**DECEMBER 2025**

SU	MO	TU	WE	TH	FR	SA
						1
			A B A♻️		5	6
7	8	A B B♻️			12	13
14	15	A B A♻️			19	20
21	B♻️	A B		25	26	27
28	A♻️	A B				



July 1st, 2025:  
November 11th, 2025:  
December 25th, 2025:  
January 1st, 2026:

Holiday Schedule A pickup moved to June 30th  
Holiday Schedule A pickup moved to November 10th  
Holiday Schedule B pickup moved to December 22nd  
Holiday Schedule A pickup moved to December 29th