



# 2025 Recycling & Garbage Collection Calendar



Keep this Recycling & Garbage Collection Calendar handy throughout the year for collection details, schedules and program information.



Questions about your collection schedule?  
Please contact the District of Invermere:  
Visit [Invermere.net](http://Invermere.net) • or call 250.342.9281  
914 8th Avenue Invermere, BC V0A 1K0

## How to use this Calendar

- A** Area A Garbage Pickup
- A<sup>♻️</sup>** Area A Recycling Pickup
- B** Area B Garbage Pickup
- B<sup>♻️</sup>** Area B Recycling Pickup

*Please note that Invermere's garbage bylaw does not allow garbage to be placed curbside before 7am the day of pickup because of issues with wildlife.*

# 2025 Recycling & Garbage Collection Calendar



## JANUARY 2025

| SUN | MON            | TUES           | WEDS           | THUR              | FRI | SAT |
|-----|----------------|----------------|----------------|-------------------|-----|-----|
|     | 30<br><b>B</b> | 31<br><b>A</b> | 1              | 2<br><b>A</b> ♻️  | 3   | 4   |
| 5   | 6              | 7<br><b>A</b>  | 8<br><b>B</b>  | 9<br><b>B</b> ♻️  | 10  | 11  |
| 12  | 13             | 14<br><b>A</b> | 15<br><b>B</b> | 16<br><b>A</b> ♻️ | 17  | 18  |
| 19  | 20             | 21<br><b>A</b> | 22<br><b>B</b> | 23<br><b>B</b> ♻️ | 24  | 25  |
| 26  | 27             | 28<br><b>A</b> | 29<br><b>B</b> | 30<br><b>A</b> ♻️ | 31  |     |

## FEBRUARY 2025

| SUN | MON | TUES           | WEDS           | THUR              | FRI | SAT |
|-----|-----|----------------|----------------|-------------------|-----|-----|
|     |     |                |                |                   |     | 1   |
| 2   | 3   | 4<br><b>A</b>  | 5<br><b>B</b>  | 6<br><b>B</b> ♻️  | 7   | 8   |
| 9   | 10  | 11<br><b>A</b> | 12<br><b>B</b> | 13<br><b>A</b> ♻️ | 14  | 15  |
| 16  | 17  | 18<br><b>A</b> | 19<br><b>B</b> | 20<br><b>B</b> ♻️ | 21  | 22  |
| 23  | 24  | 25<br><b>A</b> | 26<br><b>B</b> | 27<br><b>A</b> ♻️ | 28  |     |

# 2025 Recycling & Garbage Collection Calendar



## MARCH 2025

| SUN | MON | TUES           | WEDS           | THUR              | FRI | SAT |
|-----|-----|----------------|----------------|-------------------|-----|-----|
|     |     |                |                |                   |     | 1   |
| 2   | 3   | 4<br><b>A</b>  | 5<br><b>B</b>  | 6<br><b>B</b> ♻️  | 7   | 8   |
| 9   | 10  | 11<br><b>A</b> | 12<br><b>B</b> | 13<br><b>A</b> ♻️ | 14  | 15  |
| 16  | 17  | 18<br><b>A</b> | 19<br><b>B</b> | 20<br><b>B</b> ♻️ | 21  | 22  |
| 23  | 24  | 25<br><b>A</b> | 26<br><b>B</b> | 27<br><b>A</b> ♻️ | 28  | 29  |
| 30  | 31  |                |                |                   |     |     |

## APRIL 2025

| SUN | MON | TUES           | WEDS           | THUR              | FRI | SAT |
|-----|-----|----------------|----------------|-------------------|-----|-----|
|     |     | 1<br><b>A</b>  | 2<br><b>B</b>  | 3<br><b>B</b> ♻️  | 4   | 5   |
| 6   | 7   | 8<br><b>A</b>  | 9<br><b>B</b>  | 10<br><b>A</b> ♻️ | 11  | 12  |
| 13  | 14  | 15<br><b>A</b> | 16<br><b>B</b> | 17<br><b>B</b> ♻️ | 18  | 19  |
| 20  | 21  | 22<br><b>A</b> | 23<br><b>B</b> | 24<br><b>A</b> ♻️ | 25  | 26  |
| 27  | 28  | 29<br><b>A</b> | 30<br><b>B</b> |                   |     |     |

# 2025 Recycling & Garbage Collection Calendar



## MAY 2025

| SUN | MON | TUES           | WEDS           | THUR              | FRI | SAT |
|-----|-----|----------------|----------------|-------------------|-----|-----|
|     |     |                |                | 1<br><b>B</b> ♻️  | 2   | 3   |
| 4   | 5   | 6<br><b>A</b>  | 7<br><b>B</b>  | 8<br><b>A</b> ♻️  | 9   | 10  |
| 11  | 12  | 13<br><b>A</b> | 14<br><b>B</b> | 15<br><b>B</b> ♻️ | 16  | 17  |
| 18  | 19  | 20<br><b>A</b> | 21<br><b>B</b> | 22<br><b>A</b> ♻️ | 23  | 24  |
| 25  | 26  | 27<br><b>A</b> | 28<br><b>B</b> | 29<br><b>B</b> ♻️ | 30  | 31  |

## JUNE 2025

| SUN | MON            | TUES           | WEDS           | THUR              | FRI | SAT |
|-----|----------------|----------------|----------------|-------------------|-----|-----|
| 1   | 2              | 3<br><b>A</b>  | 4<br><b>B</b>  | 5<br><b>A</b> ♻️  | 6   | 7   |
| 8   | 9              | 10<br><b>A</b> | 11<br><b>B</b> | 12<br><b>B</b> ♻️ | 13  | 14  |
| 15  | 16             | 17<br><b>A</b> | 18<br><b>B</b> | 19<br><b>A</b> ♻️ | 20  | 21  |
| 22  | 23             | 24<br><b>A</b> | 25<br><b>B</b> | 26<br><b>B</b> ♻️ | 27  | 28  |
| 29  | 30<br><b>A</b> |                |                |                   |     |     |

# 2025 Recycling & Garbage Collection Calendar



## JULY 2025

| SUN | MON | TUES   | WEDS           | THUR              | FRI | SAT |
|-----|-----|--|----------------|-------------------|-----|-----|
|     |     | 1<br>Holiday Schedule A<br>pick up moved to<br>June 30th | 2<br><b>B</b>  | 3<br><b>A</b> ♻️  | 4   | 5   |
| 6   | 7   | 8<br><b>A</b>  | 9<br><b>B</b>  | 10<br><b>B</b> ♻️ | 11  | 12  |
| 13  | 14  | 15<br><b>A</b>   | 16<br><b>B</b> | 17<br><b>A</b> ♻️ | 18  | 19  |
| 20  | 21  | 22<br><b>A</b>   | 23<br><b>B</b> | 24<br><b>B</b> ♻️ | 25  | 26  |
| 27  | 28  | 29<br><b>A</b>   | 30<br><b>B</b> | 31<br><b>A</b> ♻️ |     |     |

## AUGUST 2025

| SUN      | MON | TUES           | WEDS           | THUR              | FRI | SAT |
|----------|-----|----------------|----------------|-------------------|-----|-----|
|          |     |                |                |                   | 1   | 2   |
| 3        | 4   | 5<br><b>A</b>  | 6<br><b>B</b>  | 7<br><b>B</b> ♻️  | 8   | 9   |
| 10       | 11  | 12<br><b>A</b> | 13<br><b>B</b> | 14<br><b>A</b> ♻️ | 15  | 16  |
| 17       | 18  | 19<br><b>A</b> | 20<br><b>B</b> | 21<br><b>B</b> ♻️ | 22  | 23  |
| 24<br>31 | 25  | 26<br><b>A</b> | 27<br><b>B</b> | 28<br><b>A</b> ♻️ | 29  | 30  |

# 2025 Recycling & Garbage Collection Calendar



## SEPTEMBER 2025

| SUN | MON | TUES           | WEDS           | THUR              | FRI | SAT |
|-----|-----|----------------|----------------|-------------------|-----|-----|
|     | 1   | 2<br><b>A</b>  | 3<br><b>B</b>  | 4<br><b>B</b> ♻️  | 5   | 6   |
| 7   | 8   | 9<br><b>A</b>  | 10<br><b>B</b> | 11<br><b>A</b> ♻️ | 12  | 13  |
| 14  | 15  | 16<br><b>A</b> | 17<br><b>B</b> | 18<br><b>B</b> ♻️ | 19  | 20  |
| 21  | 22  | 23<br><b>A</b> | 24<br><b>B</b> | 25<br><b>A</b> ♻️ | 26  | 27  |
| 28  | 29  | 30<br><b>A</b> |                |                   |     |     |

## OCTOBER 2025

| SUN | MON | TUES           | WEDS           | THUR              | FRI | SAT |
|-----|-----|----------------|----------------|-------------------|-----|-----|
|     |     |                | 1<br><b>B</b>  | 2<br><b>B</b> ♻️  | 3   | 4   |
| 5   | 6   | 7<br><b>A</b>  | 8<br><b>B</b>  | 9<br><b>A</b> ♻️  | 10  | 11  |
| 12  | 13  | 14<br><b>A</b> | 15<br><b>B</b> | 16<br><b>B</b> ♻️ | 17  | 18  |
| 19  | 20  | 21<br><b>A</b> | 22<br><b>B</b> | 23<br><b>A</b> ♻️ | 24  | 25  |
| 26  | 27  | 28<br><b>A</b> | 29<br><b>B</b> | 30<br><b>B</b> ♻️ | 31  |     |

# 2025 Recycling & Garbage Collection Calendar



## NOVEMBER 2025

| SUN      | MON         | TUES  | WEDS        | THUR           | FRI | SAT |
|----------|-------------|---|-------------|----------------|-----|-----|
|          |             |   |             |                |     | 1   |
| 2        | 3           | 4 <b>A</b>  | 5 <b>B</b>  | 6 <b>A</b> ♻️  | 7   | 8   |
| 9        | 10 <b>A</b> | 11<br>Holiday Schedule A<br>pick up moved to<br>November 10th | 12 <b>B</b> | 13 <b>B</b> ♻️ | 14  | 15  |
| 16       | 17          | 18 <b>A</b>   | 19 <b>B</b> | 20 <b>A</b> ♻️ | 21  | 22  |
| 23<br>30 | 24          | 25 <b>A</b>   | 26 <b>B</b> | 27 <b>B</b> ♻️ | 28  | 29  |

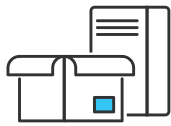
## DECEMBER 2025

| SUN | MON            | TUES        | WEDS        | THUR   | FRI | SAT |
|-----|----------------|-------------|-------------|--|-----|-----|
|     | 1              | 2 <b>A</b>  | 3 <b>B</b>  | 4 <b>A</b> ♻️  | 5   | 6   |
| 7   | 8              | 9 <b>A</b>  | 10 <b>B</b> | 11 <b>B</b> ♻️   | 12  | 13  |
| 14  | 15             | 16 <b>A</b> | 17 <b>B</b> | 18 <b>A</b> ♻️   | 19  | 20  |
| 21  | 22 <b>B</b> ♻️ | 23 <b>A</b> | 24 <b>B</b> | 25<br>Holiday Schedule B<br>pickup moved to<br>December 22nd | 26  | 27  |
| 28  | 29 <b>A</b> ♻️ | 30 <b>A</b> | 31 <b>B</b> | 1<br>Holiday Schedule A<br>pickup moved to<br>December 29th  |     |     |



# What goes where?

## Curbside Recycling (Invermere Residents)



### CARDBOARD

Exception: Cardboard covered in wax (like milk cartons) or soiled with food or grease (like pizza boxes)



### PAPER

Mixed household paper (such as newspaper, magazines, phone books, brochures, envelopes)



### TIN & ALUMINUM CANS

Food and beverage cans; labels off, rinse well.



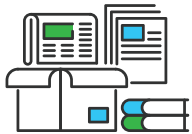
### PLASTICS NUMBERED 1-6

Grocery bags and household plastic numbered 1,2,3,4,5 or 6 (no un-numbered plastics). Plastics must be rinsed. No styrofoam even though it is marked 6.



No milk cartons, ice cream containers, disposable paper cups, glass, foil or styrofoam. These items can all be take to the Recycle BC Depot at the Invermere Transfer Station.

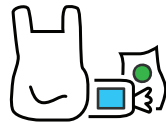
## Recycle BC Depot (at the Invermere Transfer Station)



### PAPER & CARD-BOARD PRODUCTS



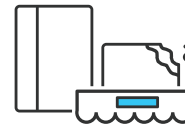
### CONTAINERS



### PLASTIC BAGS & OVERWRAP



### FLEXIBLE PACKAGING



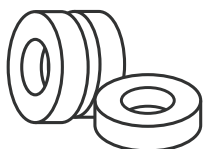
### STYROFOAM



### GLASS

✓ The Recycle BC Depot accepts more than 76 additional products that are not currently available through the curbside or Yellow Bin programs. From ziploc bags to styrofoam to foil pie tins. For an extensive list of accepted materials please visit [www.recyclebc.ca](http://www.recyclebc.ca) or [recyclebc.ca/what-can-i-recycle/](http://recyclebc.ca/what-can-i-recycle/)

## Provincial Product Stewardship Programs



### TIRES

Columbia Valley Landfill, Canadian Tire, K5 Mechanical, Mister Tire, OK Tire, & Walker's Repair [www.tsbc.ca](http://www.tsbc.ca)



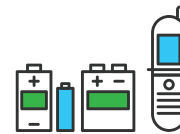
### LIGHT BULBS

Invermere Home Hardware [www.productcare.org](http://www.productcare.org)



### OIL, FILTERS & ANTI-FREEZE

Castle Fuels & Walker's Repair Centre [www.bcusedoil.com](http://www.bcusedoil.com)



### BATTERIES & CELL-PHONES

The Source, Invermere Home Hardware & Rona [www.call2recycle.ca](http://www.call2recycle.ca)



### PAINT

Invermere Home Hardware & Rona [www.productcare.org](http://www.productcare.org)



### MEDICATIONS

Lambert-Kipp Pharmacy, & Pharmasave [www.healthsteward.ca](http://www.healthsteward.ca)



### SMOKE & CO2 ALARMS

Invermere Fire Department [www.productcare.org](http://www.productcare.org)



### SMALL APPLIANCES

Invermere Bottle Depot [www.return-it.ca](http://www.return-it.ca)



### ELECTRONICS

Invermere Bottle Depot [www.return-it.ca](http://www.return-it.ca)

For an extensive list of accepted materials, please visit:

[recyclebc.ca/what-can-i-recycle/](http://recyclebc.ca/what-can-i-recycle/)

## Curbside Waste

Unfortunately not all waste that is produced in the average household can be recycled. This is where the curbside waste collection comes in. Some examples would include: food scraps (if you don't compost); personal hygiene products; paper towels; tissues and napkins, diapers and sanitary products; bagged animal waste; etc.





# Calendar

### JANUARY 2025

| SU | MO | TU      | WE | TH  | FR | SA |
|----|----|---------|----|-----|----|----|
|    |    |         | 1  | A♻️ | 3  | 4  |
| 5  | 6  | A B B♻️ |    |     | 10 | 11 |
| 12 | 13 | A B A♻️ |    |     | 17 | 18 |
| 19 | 20 | A B B♻️ |    |     | 24 | 25 |
| 26 | 27 | A B A♻️ |    |     | 31 |    |

### FEBRUARY 2025

| SU | MO | TU      | WE | TH | FR | SA |
|----|----|---------|----|----|----|----|
|    |    |         |    |    |    | 1  |
| 2  | 3  | A B B♻️ |    |    | 7  | 8  |
| 9  | 10 | A B A♻️ |    |    | 14 | 15 |
| 16 | 17 | A B B♻️ |    |    | 21 | 22 |
| 23 | 24 | A B A♻️ |    |    | 28 |    |

### MARCH 2025

| SU | MO | TU      | WE | TH | FR | SA |
|----|----|---------|----|----|----|----|
|    |    |         |    |    |    | 1  |
| 2  | 3  | A B B♻️ |    |    | 7  | 8  |
| 9  | 10 | A B A♻️ |    |    | 14 | 15 |
| 16 | 17 | A B B♻️ |    |    | 21 | 22 |
| 23 | 24 | A B A♻️ |    |    | 28 | 29 |
| 30 | 31 |         |    |    |    |    |

### APRIL 2025

| SU | MO | TU      | WE | TH | FR | SA |
|----|----|---------|----|----|----|----|
|    |    |         |    |    |    | 1  |
| 2  | 3  | A B B♻️ |    |    | 4  | 5  |
| 6  | 7  | A B A♻️ |    |    | 11 | 12 |
| 13 | 14 | A B B♻️ |    |    | 18 | 19 |
| 20 | 21 | A B A♻️ |    |    | 25 | 26 |
| 27 | 28 | A B     |    |    |    |    |

### MAY 2025

| SU | MO | TU      | WE | TH  | FR | SA |
|----|----|---------|----|-----|----|----|
|    |    |         |    |     |    | 1  |
| 2  | 3  |         |    | B♻️ | 2  | 3  |
| 4  | 5  | A B A♻️ |    |     | 9  | 10 |
| 11 | 12 | A B B♻️ |    |     | 16 | 17 |
| 18 | 19 | A B A♻️ |    |     | 23 | 24 |
| 25 | 26 | A B B♻️ |    |     | 30 | 31 |

### JUNE 2025

| SU | MO | TU      | WE | TH | FR | SA |
|----|----|---------|----|----|----|----|
| 1  | 2  | A B A♻️ |    |    | 6  | 7  |
| 8  | 9  | A B B♻️ |    |    | 13 | 14 |
| 15 | 16 | A B A♻️ |    |    | 20 | 21 |
| 22 | 23 | A B B♻️ |    |    | 27 | 28 |
| 29 | 30 | A       |    |    |    |    |

### JULY 2025

| SU | MO | TU      | WE | TH  | FR | SA |
|----|----|---------|----|-----|----|----|
|    |    |         |    |     |    | 1  |
| 2  | 3  |         |    | B♻️ | 4  | 5  |
| 6  | 7  | A B B♻️ |    |     | 11 | 12 |
| 13 | 14 | A B A♻️ |    |     | 18 | 19 |
| 20 | 21 | A B B♻️ |    |     | 25 | 26 |
| 27 | 28 | A B A♻️ |    |     |    |    |

### AUGUST 2025

| SU | MO | TU      | WE | TH | FR | SA |
|----|----|---------|----|----|----|----|
|    |    |         |    |    |    | 1  |
| 2  | 3  |         |    |    |    | 2  |
| 3  | 4  | A B B♻️ |    |    | 8  | 9  |
| 10 | 11 | A B A♻️ |    |    | 15 | 16 |
| 17 | 18 | A B B♻️ |    |    | 22 | 23 |
| 24 | 25 | A B A♻️ |    |    | 29 | 30 |
| 31 |    |         |    |    |    |    |

### SEPTEMBER 2025

| SU | MO | TU      | WE | TH | FR | SA |
|----|----|---------|----|----|----|----|
|    |    |         |    |    |    | 1  |
| 2  | 3  | A B B♻️ |    |    | 5  | 6  |
| 7  | 8  | A B A♻️ |    |    | 12 | 13 |
| 14 | 15 | A B B♻️ |    |    | 19 | 20 |
| 21 | 22 | A B A♻️ |    |    | 26 | 27 |
| 28 | 29 | A       |    |    |    |    |

### OCTOBER 2025

| SU | MO | TU      | WE | TH  | FR | SA |
|----|----|---------|----|-----|----|----|
|    |    |         |    |     |    | 1  |
| 2  | 3  |         |    | B♻️ | 3  | 4  |
| 5  | 6  | A B A♻️ |    |     | 10 | 11 |
| 12 | 13 | A B B♻️ |    |     | 17 | 18 |
| 19 | 20 | A B A♻️ |    |     | 24 | 25 |
| 26 | 27 | A B B♻️ |    |     | 31 |    |

### NOVEMBER 2025

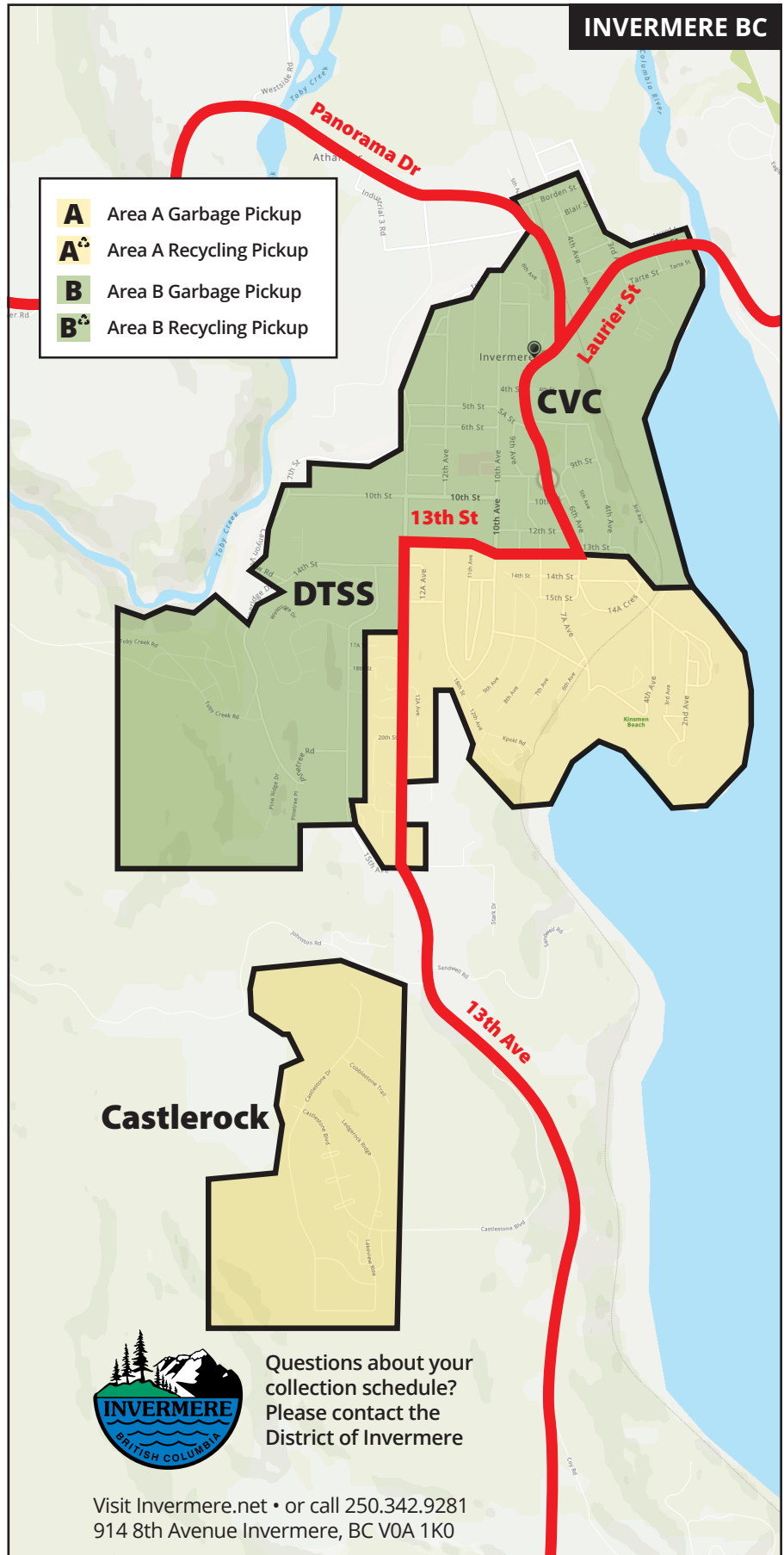
| SU | MO | TU      | WE | TH    | FR | SA |
|----|----|---------|----|-------|----|----|
|    |    |         |    |       |    | 1  |
| 2  | 3  | A B A♻️ |    |       | 7  | 8  |
| 9  | 10 | A       | 11 | B B♻️ | 14 | 15 |
| 16 | 17 | A B A♻️ |    |       | 21 | 22 |
| 23 | 24 | A B B♻️ |    |       | 28 | 29 |
| 30 |    |         |    |       |    |    |

### DECEMBER 2025

| SU | MO | TU      | WE  | TH | FR | SA |
|----|----|---------|-----|----|----|----|
|    |    |         |     |    |    | 1  |
| 2  | 3  | A B A♻️ |     |    | 5  | 6  |
| 7  | 8  | A B B♻️ |     |    | 12 | 13 |
| 14 | 15 | A B A♻️ |     |    | 19 | 20 |
| 21 | 22 | B♻️     | A B |    | 25 | 26 |
| 27 | 28 | A♻️     | A B |    |    |    |
| 29 | 30 |         |     |    |    |    |

July 1st, 2025:  
 November 11th, 2025:  
 December 25th, 2025:  
 January 1st, 2026:

Holiday Schedule A pick up moved to June 30th  
 Holiday Schedule A pick up moved to November 10th  
 Holiday Schedule B pickup moved to December 22nd  
 Holiday Schedule A pickup moved to December 29th



Questions about your collection schedule?  
 Please contact the District of Invermere

Visit [Invermere.net](http://Invermere.net) • or call 250.342.9281  
 914 8th Avenue Invermere, BC V0A 1K0