

DISTRICT OF INVERMERE

BYLAW NO. 1645, 2023

A bylaw to amend the fee structures for the use of property held by the municipality for pleasure, recreation or community uses.

WHEREAS the *Community Charter* empowers Council to regulate, prohibit, impose requirements, and impose fees in relation to public places and buildings and other structures;

WHEREAS it is deemed desirable and expedient to amend these fees;

NOW THEREFORE the Council of the District of Invermere, in open meeting assembled, enacts as follows:

1. This Bylaw shall be cited as "Parks and Facilities Fees Amendment Bylaw No. 1645, 2023."
2. Bylaw No. 1622, 2022 being "Parks and Facilities Amendment Bylaw No. 1622, 2022" is hereby repealed and the attached is substituted as Schedule "A" to "Parks and Facilities Regulation Bylaw No. 1559, 2019".

Read a First Time this 24th day of October, 2023.

Read a Second Time this 24th day of October, 2023.

Read a Third Time this 24th day of October, 2023.

ADOPTED this 14th day of November, 2023.

signed "Al Miller"

signed "Andrew Young"

MAYOR

CHIEF ADMINISTRATIVE OFFICER

Certified a true copy of Bylaw No. 1645, 2023
this ____ day of _____, _____.

Corporate Officer

SCHEDULE "A"
FEES AND CHARGES

1. COLUMBIA VALLEY CENTRE

a. Private/Commercial

CLASSIFICATION	2023	2024	2025	2026
weekend package (from 5:00 pm Friday to noon Sunday)	\$1,130	\$1,164	\$1,200	\$1,236
full hall, full day (includes kitchen, NO propane)	\$660	\$678	\$696	\$714
full hall, per hour	\$110	\$113	\$116	\$119
half hall, full day	\$360	\$372	\$384	\$396
half hall, per hour	\$60	\$62	\$64	\$66

b. Registered not-for-profit/Community Groups

CLASSIFICATION	2023	2024	2025	2026
full hall, full day (includes kitchen, NO propane)	\$222	\$228	\$234	\$240
full hall, per hour	\$37	\$38	\$39	\$40
half hall, full day	\$162	\$168	\$174	\$180
half hall, per hour	\$27	\$28	\$29	\$30

c. Additional Fees

CLASSIFICATION	2023	2024	2025	2026
damage deposit weekend package	\$1000	\$1000	\$1000	\$1000
damage deposit (excluding weekend package)	\$500	\$500	\$500	\$500
non-routine service call	\$156	\$160	\$165	\$170

d. Add-ons

CLASSIFICATION	2023	2024	2025	2026
roof top patio per day	\$220	\$228	\$236	\$244
roof top patio per hour	\$55	\$57	\$59	\$61
kitchen (use of propane)	\$63	\$65	\$67	\$69
set up tables and chairs (setup diagram to be supplied by renter)	\$525	\$540	\$556	\$573
8' banquet tables (minimum 10)	\$52	\$54	\$56	\$58
set up and take down of theatre seats	\$225	\$232	\$239	\$246
curtains (operated by approval personnel)	\$63	\$65	\$67	\$69
aluminum executive staging	\$225	\$232	\$239	\$246
pipe & drape	\$90	\$93	\$96	\$99
Mobile vending trailer (plus damage deposit)	\$100	\$103	\$106	\$109
outdoor movie theatre*	\$2,000	\$2,060	\$2,122	\$2,186

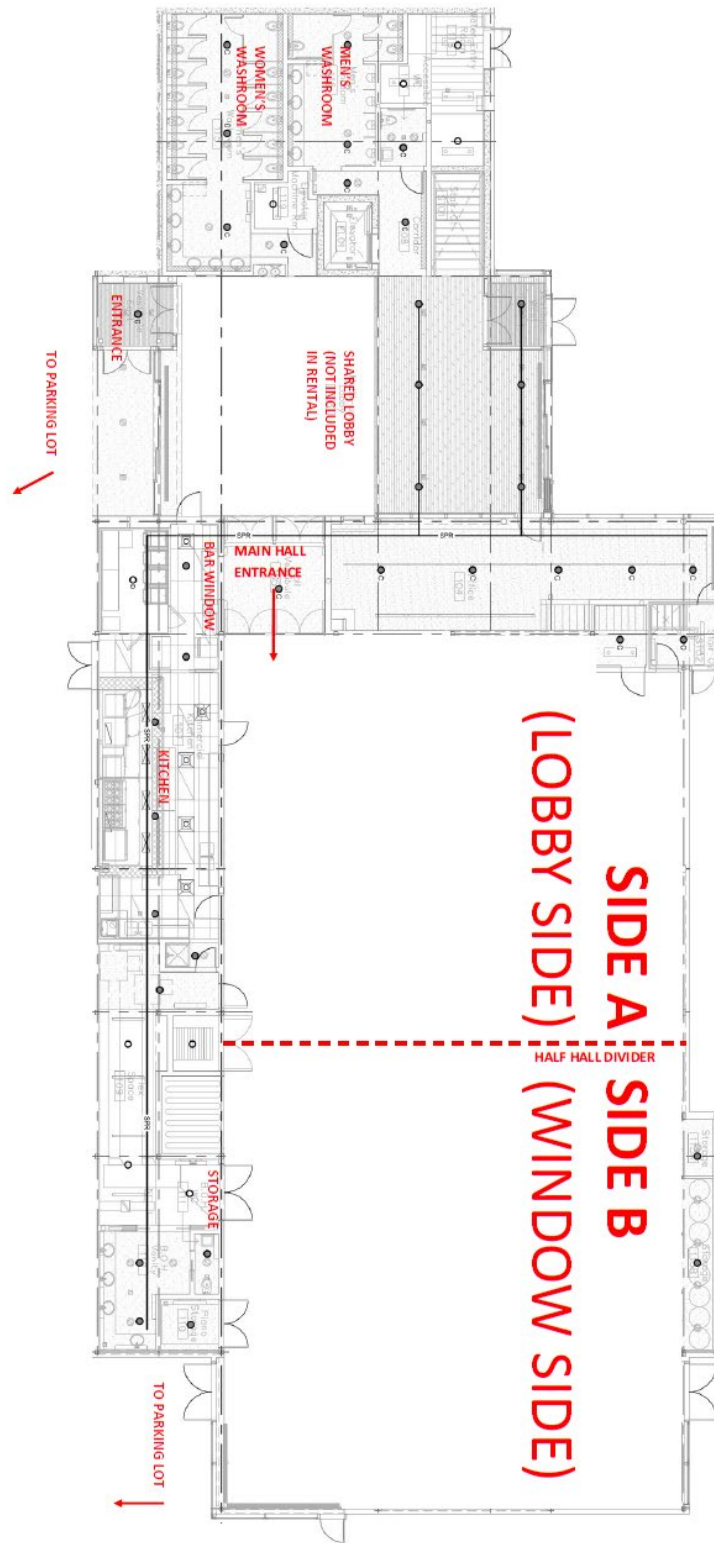
*outside of the District of Invermere user groups will be billed at actual costs

e. Audio and Video Offerings

CLASSIFICATION	2023	2024	2025	2026
dedicated technician minimum 4 hours	\$375	\$375	\$375	\$375
dedicated technician over and above minimum 4 hours, per hour	\$95	\$95	\$95	\$95
audio (microphone(s), music, PA sound system) per day (**)	\$63	\$65	\$67	\$69
video (screen, projector) per day	\$63	\$65	\$67	\$69
lighting per day (**)	\$63	\$65	\$67	\$69

**operated by District of Invermere approved technician

f. Columbia Valley Centre layout (for guidance purposes)



2. CPR LODGE:

CLASSIFICATION	2023	2024	2025	2026
private/commercial - weekend package (from noon Friday to noon Sunday)	\$370	\$381	\$392	\$404
private/commercial - Friday to Sunday, per day***	\$265	\$273	\$281	\$289
private/commercial - Monday to Thursday, per day	\$192	\$198	\$204	\$210
private/commercial - Monday to Thursday, per hour	\$32	\$33	\$34	\$35
not-for-profit/meetings, per day	\$132	\$138	\$144	150
not-for-profit/meetings, per hour	\$22	\$23	\$24	\$25
non-routine service call	\$156	\$160	\$165	\$170
damage deposit weekend package	\$500	\$500	\$500	\$500
damage deposit (excluding weekend package)	\$150	\$150	\$150	\$150

***CPR Lodge cannot be rented hourly Friday to Sunday

3. MNAP CONCESSION:

CLASSIFICATION	2023	2024	2025	2026
youth, per day	\$32	\$33	\$34	\$35
adult, per day	\$53	\$55	\$57	\$59
non-routine service call	\$156	\$160	\$165	\$170
damage deposit	\$50	\$50	\$50	\$50

4. PARKS/GREENSPACE (including, but not limited to Mount Nelson Athletic Park, Rotary Ball Park, Skatepark, Ball Diamonds, Play Fields, Tunnacliffe Heights Park, Pynelogs greenspace, Pothole Park, Westside Park, Lions Park, Castlerock Park, etc.):

SPORTS	2023	2024	2025	2026
adult sports, per game up to 2 hours maximum	<i>free</i>	<i>free</i>	<i>free</i>	<i>free</i>
adult sports, per day	\$32	\$33	\$34	\$35
adult sports, per season	\$525	\$540	\$556	\$573
for profit sports camps, per day	\$53	\$55	\$57	\$59
school district/local youth leagues	<i>free</i>	<i>free</i>	<i>free</i>	<i>free</i>
fitness classes up to 2 hours max.	<i>free</i>	<i>free</i>	<i>free</i>	<i>free</i>
fitness classes, per day	\$53	\$55	\$57	\$59
non-routine service call	\$156	\$160	\$165	\$170

damage deposit	\$100	\$100	\$100	\$100
----------------	-------	-------	-------	-------

PRIVATE FUNCTIONS/EVENTS	2023	2024	2025	2026
for profit/private, per hour up to 2 hours maximum	<i>free</i>	<i>free</i>	<i>free</i>	<i>free</i>
for profit/private, per day	\$315	\$324	\$334	\$344
not-for-profit, per hour up to 2 hours maximum	<i>free</i>	<i>free</i>	<i>free</i>	<i>free</i>
not-for-profit organizations, per day	\$105	\$108	\$111	\$114
non-routine service call	\$156	\$160	\$165	\$170
damage deposit	\$100	\$100	\$100	\$100

All functions (including free usage) MUST provide appropriate liability coverage and damage deposit in advance of the usage date/s. Hall rental fees must be paid in full in advance of the usage date/s.