



DISTRICT OF INVERMERE
914 8th Avenue PO Box 339
Invermere, BC V0A 1K0
www.invermere.net

Using Your Automated Curbside Waste and Recycling Collection Program

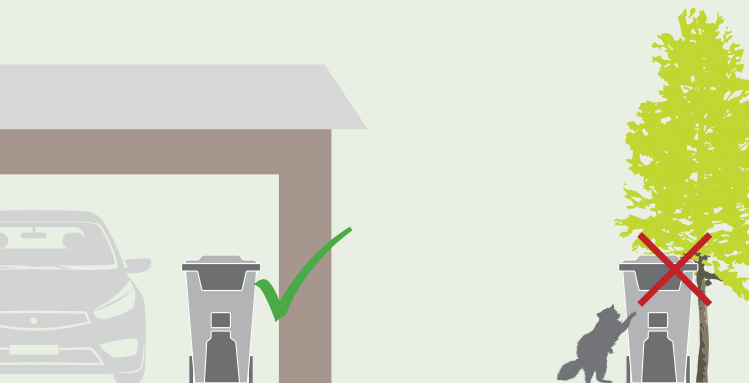
COLLECTION SCHEDULE

Automated waste collection is more efficient than manual collection. As a result, waste collection will now take less time and will limit wildlife access to curbside waste. The time saved on the road will reduce greenhouse gas emissions from collection vehicles by 25%. Waste will continue to be collected on Tuesdays and Wednesdays only. Recycling will be collected in your area on alternating Thursdays.

To view the collection calendar and map please visit:
<https://invermere.net/operations/waste/>

WILDLIFE AND WASTE

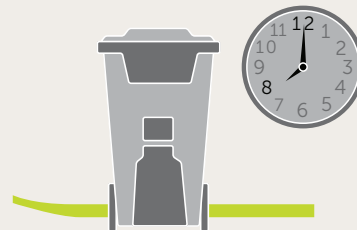
In order to lower the attraction to wildlife, please store all waste indoors between collection days. Storing your waste and recycling in a secured location, like a garage or shed, is the most effective way to lower wildlife interaction.



How to Use Your Cart

1 PARK IT

Carts should be on the street with the wheels placed against the curb or edge of the road. **All carts should be out by 8am.** Carts must not be placed out before 7am on your collection day.



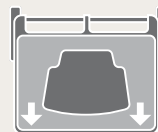
2 CLOSE IT/LOCK IT

The lid on your waste cart must be locked at the curbside and your recycling cart lid firmly shut.



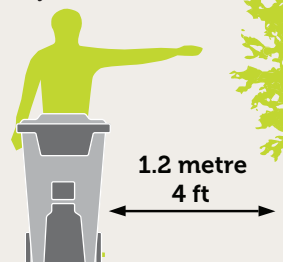
3 POINT IT

Arrows on the lid should point to centre of the road.



4 SPACE IT

Give at least 1.2 metres (4 ft) of clearance to any obstacle.



Help Our Collection Staff



DO NOT overfill carts or place additional waste on the lid



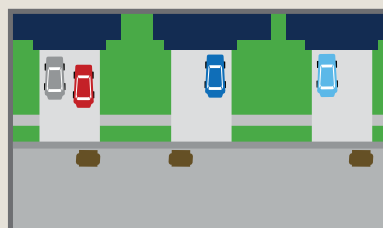
DO NOT put glass in the recycling cart



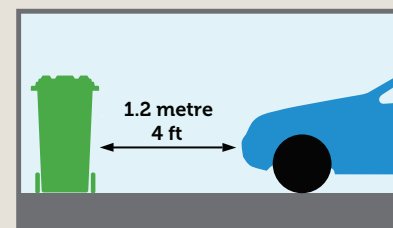
DO NOT put liquids or ash in either cart



Place waste and smaller loose recycling items in bags within your carts to reduce fly away litter during tipping process



Where possible please place carts in front of your driveway and consider parking **OFF THE STREET** on collection days.



Park vehicles at least 1.2 metres (4 ft) away from carts if you cannot park off the street.

Industrial Park Transfer Station

This site is only to be used to drop off household waste. Furniture, appliances, contractor waste, and yard waste will not be accepted at this site. Only waste in residential bags that will fit through bear resistant lids will be accepted

Invermere Transfer Station is open 7 days a week from 8:30am - 5:30pm

Closed Christmas Day, New Years Day, Remembrance Day, Thanksgiving Day, and Family Day.

Hours are subject to change. For up to date hours of operation and a detailed listing of the types of waste and recycling accepted, please contact The Regional District of East Kootenay at 250 489 6900 or environmentalservicesdept@rdek.bc.ca

Columbia Valley Landfill

Please take all other waste to the Columbia Valley Landfill loc, at 1884 Windermere Loop Road. The Landfill is open 7 days a week 9am-6pm. Household garbage is free. For disposal costs associated with other than household waste please call the landfill at 250 489 6900 or visit rdek.bc.ca and search for the Columbia Valley Landfill User Fees

Inquiries & Contact Information

Each cart is equipped with a Radio Frequency Identification (RFID) tag that is registered to a specific residence providing an enhanced tracking system. When a cart is collected, its RFID tag is scanned by the truck to streamline customer inquiries, complaints, and compliance issues. If collection of your waste or recycling is missed please contact The Regional District of East Kootenay at 250 489 6900.

If you have an issue with a missing or damaged cart, please contact:

The District of Invermere at 250-342-9281

For more information visit:

<https://invermere.net/operations/waste/garbage>



DISTRICT OF INVERMERE
914 8th Avenue
PO Box 339
Invermere, BC V0A 1K0
www.invermere.net

Utility Billing and Payment:

Utilities are billed semiannually with billing periods from April 1st - September 30th and October 1st - March 31st. Payment of utility bills can be made through online banking, please remember it can take up to 3 days to process your payment. Make sure you give yourself enough time for the payment to be processed to avoid penalties. Alternately payments can be made at the District of Invermere municipal office by cash, cheque or debit.

The Pre-Authorized Payment Plan is an easy way to make your District of Invermere payments—it eliminates cheque writing and postage costs. Please note your account must be in good standing to begin this program. Simply fill in the Pre-Authorized Payment Plan form and return to our office with a "VOID" cheque to enroll. On the form you can select either variable, to have the full amount of your bill withdrawn from your account on the due date or you can select fixed. If selecting fixed, please enter the amount you would like withdrawn from your bank account each month. This equal payment will be withdrawn on the 15th of each month. When your bill is issued, your credit that you built with the monthly installments will be applied to your bill. If there is a balance owing on the bill, this will be automatically withdrawn from your bank account on the due date to keep you in good standing. For further information on this program, please contact the District of Invermere office by email at info@invermere.net or by phone at 250-342-9281.

Community Bins

Don't have anywhere to store attractants between collection day? The City provides commercial bear-proof bins for public use that are accessible at:

Industrial Park Transfer Station
1101 Industrial Road 1, Athalmer, BC
(Next to the Public Works Yard)



As residents in wildlife habitat it is our responsibility to prevent conflict between people, bears and other wildlife. Keeping waste stored indoors until collection day and securing wildlife attractants is the MOST

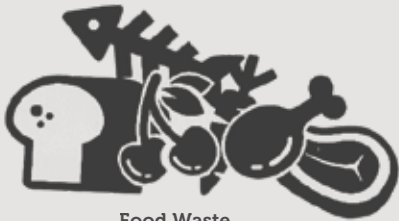
EFFECTIVE way to keep people safe, prevent property damage, and avoid the unnecessary killing of bears that come into conflict with people.

It is everyone's responsibility in BC to prevent attracting dangerous wildlife to their property (BC Wildlife Act, Section 33.1). For more information on keeping wildlife wild and communities safe, visit www.wildsafebc.com



What Goes Where

Curbside Waste



Food Waste



Plastic Bags or
Garbage of Any Kind



Window & Mirror
Drinking Glasses & Ceramics



Personal Hygiene
Products



Clothes &
Textiles



Paper Towels
Tissues, Napkins



Coffee Grounds,
Tea Bags
& Paper Filters



Diapers
& Sanitary
Products



Styrofoam Packaging &
Food/Drink Containers



Bagged Animal
Waste

Curbside Recycling



Mixed Household
Containers



Chip Cans



Clam Shell
Packaging



Flattened Plastic
Milk Jugs



Plastic
Food Trays



Cardboard & Paper
Cardboard flattened to a max
1 metre x 1 metre



Magazines &
Phone Books



Paper Egg Cartons



Food Cans & Tins



Tetra Pak
Containers



Books
Hardcover removed



Newspapers
& Flyers

Recycle Depot or Transfer Station

These items represent only a small sampling of what should be returned to the Recycling Depot or Transfer Station.

For a full list of materials please visit the appropriate website:

www.return-it.ca/locations/invermere-bottle-depot-recyc | www.rdek.bc.ca/departments/environmentalservices



Automotive
Batteries



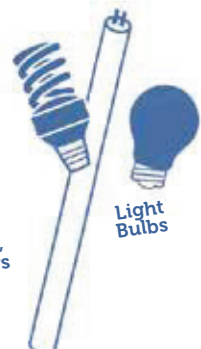
Paint & Solvents



Small Appliances



TV's, Computers,
Monitors, Printers
& Scanners



Light
Bulbs



Alkaline Batteries



E-Toys &
Electronics



Used Motor
Oil & Filters



Furniture



Tires



Calendar

JANUARY 2024

SU	MO	TU	WE	TH	FR	SA
	1	A B A♻️			5	6
7	8	A B B♻️			12	13
14	5	A B A♻️			19	20
21	22	A B B♻️			26	27
28	29	A B				

FEBRUARY 2024

SU	MO	TU	WE	TH	FR	SA
				A♻️	2	3
4	5	A B B♻️			9	10
11	12	A B A♻️			16	17
18	19	A B B♻️			23	24
25	26	A B A♻️				

MARCH 2024

SU	MO	TU	WE	TH	FR	SA
					1	2
3	4	A B B♻️			8	9
10	11	A B A♻️			15	16
17	18	A B B♻️			22	23
24	25	A B A♻️			29	30
31						

APRIL 2024

SU	MO	TU	WE	TH	FR	SA
	1	A B B♻️			5	6
7	8	A B A♻️			12	13
14	15	A B B♻️			19	20
21	22	A B A♻️			26	27
28	29	A				

MAY 2024

SU	MO	TU	WE	TH	FR	SA
			B B♻️		3	4
5	6	A B A♻️			10	11
12	13	A B B♻️			17	18
19	20	A B A♻️			24	25
26	27	A B B♻️			31	

JUNE 2024

SU	MO	TU	WE	TH	FR	SA
						1
2	3	A B A♻️			7	8
9	10	A B B♻️			14	15
16	17	A B A♻️			21	22
23	24	A B B♻️			28	29
30						

JULY 2024

SU	MO	TU	WE	TH	FR	SA
	1	A B A♻️			5	6
7	8	A B B♻️			12	13
14	15	A B A♻️			19	20
21	22	A B B♻️			26	27
28	29	A B				

AUGUST 2024

SU	MO	TU	WE	TH	FR	SA
				A♻️	2	3
4	5	A B B♻️			6	10
11	12	A B A♻️			16	17
18	19	A B B♻️			23	24
25	26	A B A♻️			30	31

SEPTEMBER 2024

SU	MO	TU	WE	TH	FR	SA
1	2	A B B♻️			6	7
8	9	A B A♻️			13	14
15	16	A B B♻️			20	21
22	23	A B A♻️			27	28
29	30					

OCTOBER 2024

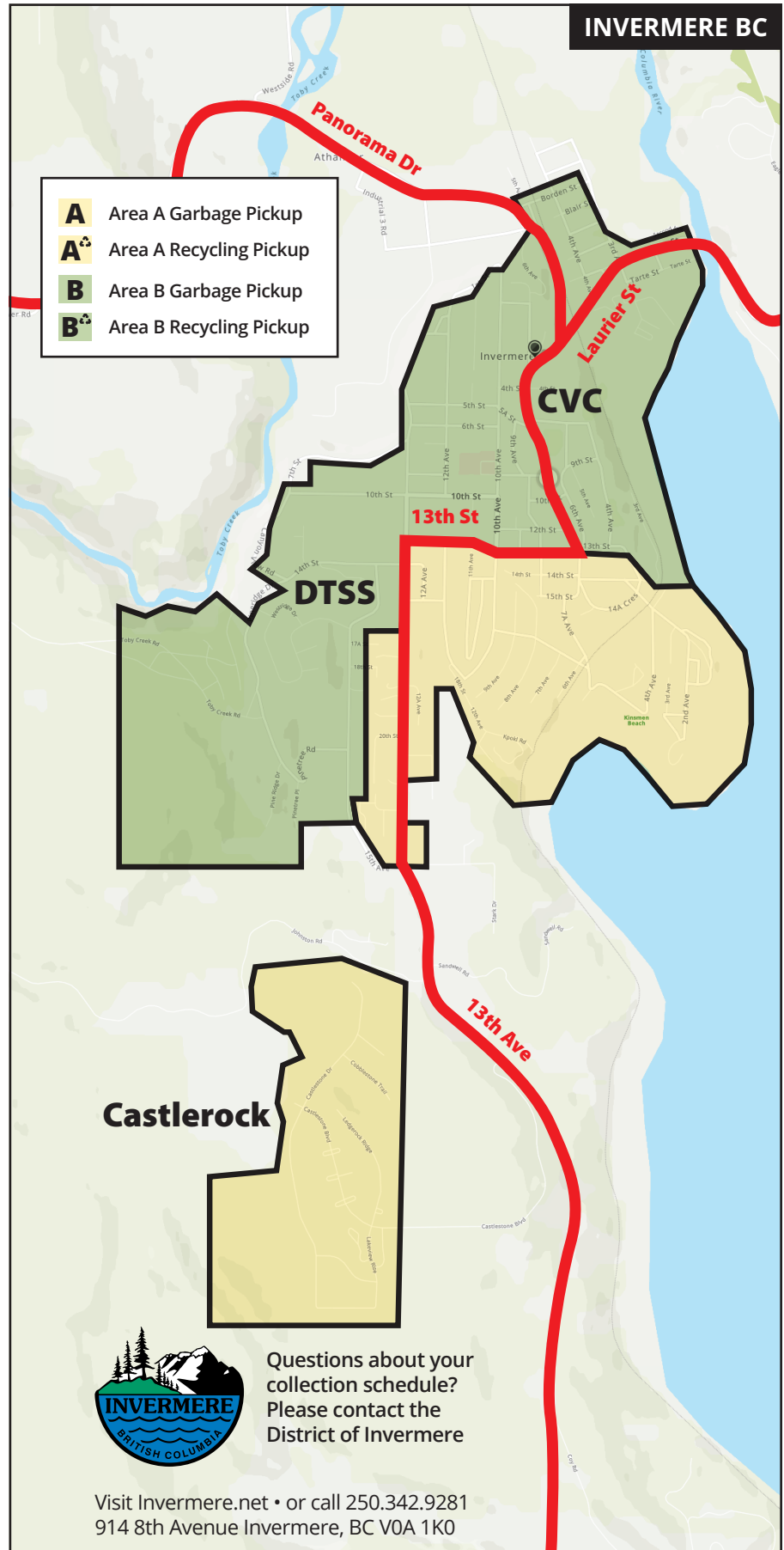
SU	MO	TU	WE	TH	FR	SA
		A B B♻️			4	5
6	7	A B A♻️			11	12
13	14	A B B♻️			18	19
20	21	A B A♻️			25	26
27	28	A B B♻️				

NOVEMBER 2024

SU	MO	TU	WE	TH	FR	SA
					1	2
3	4	A B A♻️			8	9
10	11	A B B♻️			15	16
17	18	A B A♻️			22	23
24	25	A B B♻️			29	30

DECEMBER 2024

SU	MO	TU	WE	TH	FR	SA
1	2	A B A♻️			6	7
8	9	A B B♻️			13	14
15	16	A B A♻️			20	21
22		B A	25	26	B♻️	28
29		B A	1	A♻️		



Questions about your collection schedule?
Please contact the District of Invermere

Visit [Invermere.net](https://www.invermere.net) • or call 250.342.9281
914 8th Avenue Invermere, BC V0A 1K0