

# DISTRICT OF INVERMERE

## 2022 FIRESMART™ REBATE PROGRAM



**Table of Contents**

Invermere FireSmart Rebate program ..... 1

Eligible activities ..... 2

Property, Homeowner and Assessor Information..... 4

FireSmart Home Ignition Zone Assessment Score Card..... 5

Assessor’s Comments and Recommendations ..... 9

Suggested Rebate Workplan ..... 11

Work Hours and Material Cost Estimate Form related to Rebate Workplan ..... 12

Post-Assessment / Rebate Eligibility ..... 14

## Invermere FireSmart Rebate program

The FireSmart Rebate program offers financial support for homeowners to take steps to FireSmart their homes. Through funding received under the Union of BC Municipalities' FireSmart Community Funding & Supports program within the Community Resiliency Investment (CRI) program, the District of Invermere offers up to \$500 rebates to residents who take steps to FireSmart their homes or property. The Invermere FireSmart Rebate program started in 2020, and its impact on the community has been growing every year since then.

### How to participate

1. Contact Invermere FireSmart to schedule a free FireSmart Home Assessment.  
  
Email [FireSmart@Invermere.net](mailto:FireSmart@Invermere.net) or call (250) 342-3200 ext. 1303
2. Take action on the mitigation recommendations outlined during the home assessment, and in line with the work plan.  
Keep track of hours worked and keep all receipts.
3. Contact Invermere FireSmart to schedule a post-assessment for confirmation and approval of the completed work on the property.
4. Submit receipts/hours worked to Invermere FireSmart and the District of Invermere will emit your rebate and mail it to you.

If eligible, the homeowner will be reimbursed 50% of material and labour costs, to a maximum rebate of \$500 per property.

The FireSmart Rebate program is available for registration from May 1<sup>st</sup> to October 31<sup>st</sup>, 2022, on a first-come-first-served basis. The deadline to complete the recommended work and request a rebate is November 30<sup>th</sup>, 2022.

Assessments completed in 2021 but not acted upon are valid under the 2022 Rebate program.

## Eligible activities

The CRI program provides funding for FireSmart activities on homes and residential properties. Eligible activities are outlined in the table below<sup>1</sup>.

Home / Non-combustible Zone (0 to 1.5 meters)	
Roofing	Installation of Class A UL/ASTM fire-rated roofing (e.g. Metal, clay tile or asphalt shingles)
	Installation of non-combustible gutters
	Removal of needles, leaves and other combustible materials (e.g. overhanging branches)
	Installation of closed eaves and vents with 3 mm (1/8") screening or ASTM ember resistant rated vents
Siding	Installation of ignition resistant (fibre cement board, log) or non-combustible (stucco, metals, brick/stone)
	Correction of all gaps, cracks, missing siding or holes where embers could accumulate, lodge or penetrate
	Create 15 cm ground-to-siding non-combustible clearance
Windows and doors	Installation of tempered glass in all doors and windows
	Installation of multi-pane glass small/medium and treated in all windows and doors
	Correction of gaps in doors (including garage doors) where embers could accumulate, lodge or penetrate
Balcony, Deck, Porch or Open Foundation	Ensure that there are no gaps or cracks where embers could accumulate, lodge or penetrate
	Removal of combustible debris under balcony, deck, porch or open foundation
	Deck constructed of heavy timber, non-combustible/fire-rated construction with non-combustible surface
Yard / Zone 1 (1.5 to 10 metres)	
Woodpiles	Relocate woodpiles more than 10 metres from home
Outbuildings	Relocate unmitigated outbuildings more than 10 metres (50 feet) from home
Trees	Replacement or removal of mixed wood and/or conifer species
Surface vegetation	Ensure a well-maintained lawn (10 cm or shorter, low flammability, low growing discontinuous plants)
	Removal of flammable plants, continuous plants or tall-growing plants
	Removal of twigs, branches, logs and accumulations of tree needles or leaves and other combustible materials
Yard / Zone 2 (10 to 30 metres)	
Forest	Planting of healthy and properly spaced deciduous
	Replacement or thinning of mixed wood (both deciduous and conifer)
	Creation of separated and thinned conifers (if present)
Surface vegetation	Removal of surface vegetation within 10-30 metres
	Removal or proper spacing of flammable shrubs within 10-30 metres
	Removal of low tree branches within 2 metres of the ground

<sup>1</sup> As per the FireSmart Assessment Work Hours Estimate Form, Updated 01/18/2022. <https://firesmartbc.ca/wp-content/uploads/2020/06/FireSmart-Assessment-Work-Hours-Estimate-Form-CRI.pdf>

## Property, Homeowner and Assessor Information

Homeowner Name:

Homeowner Phone:

Homeowner Email:

Property Address:

Assessor's Name and Contact info:

Date of Assessment:

# FIRESMART™ HOME IGNITION ZONE ASSESSMENT SCORE CARD



HOME ADDRESS:

For each Hazard Factor - select one point rating score and enter in score column on right.

## HOME

HAZARD FACTOR		CHARACTERISTICS AND POINT RATINGS				SCORE
1	Roof material	Fire-Rated - good condition <i>(metal, clay, asphalt shingles)</i>		Fire-Rated - poor condition or unrated <i>(wood shakes)</i>		
		0		30		
2	Gutter type and roof cleanliness	Non-combustible gutter - no debris	Combustible gutter - no debris	Non-combustible gutter with debris	Combustible gutter with debris	
		0	6	10	16	
3	Vents and openings	Non-combustible, fire-rated vents or vents with 3 mm screening		Combustible vents, not fire-rated or without 3 mm screening		
		0		6		
4	Eaves	Closed or Boxed-in eaves		Open eaves		
		0		6		
5	Building exterior or siding	Non-combustible or ignition resistant <i>(fibre cement, stucco, log, metal, brick/stone)</i>		Combustible or non-ignition resistant <i>(vinyl, wood)</i>		
		0		6		
6	Building exterior condition	No gaps, cracks or holes		Gaps, cracks or holes		
		0		6		
7	Ground-to-siding clearance	15 cm non-combustible vertical ground-to-siding clearance		No 15 cm non-combustible vertical ground-to-siding clearance		
		0		30		
8	Balcony, deck, porch	N/A, no gaps or cracks, heavy timber, non-combustible or fire-rated construction with non-combustible surface and no combustible debris under deck		Gaps or cracks, no heavy timber or fire-rated construction with combustible surface and combustible debris under deck		
		0		30		

## HOME

HAZARD FACTOR		CHARACTERISTICS AND POINT RATINGS				SCORE	
9	Position on slope	Building is located on the bottom or lower portion of hill		Building is located on the mid to upper portion or crest of hill			
		0		6			
10	Window Glass	Tempered	Multi-pane / Thermal		Single pane		
		Any Size	Small-Medium <i>Less than 1 m x 1 m</i>	Large <i>More than 1 m x 1 m</i>	Small-Medium <i>Less than 1 m x 1 m</i>	Large <i>More than 1 m x 1 m</i>	
		0	1	2	4	6	
<b>HAZARD SCORE - Total for HOME</b>							

## NON-COMBUSTIBLE ZONE

(0 - 1.5 metres from HOME)

HAZARD FACTOR		CHARACTERISTICS AND POINT RATINGS		SCORE		
11	1.5 m from the ground-level exterior footprint of the structure including any attachments or extensions	Non-combustible surface, no combustible debris, materials, fences or plants present		Combustible surface, combustible debris, materials, fences or plants present		
		0		30		
<b>HAZARD SCORE - Total for Non-Combustible Zone</b>						

## ZONE 1

(1.5 - 10 metres from HOME)

HAZARD FACTOR		CHARACTERISTICS AND POINT RATINGS		SCORE		
12	Woodpiles and other combustible materials <i>(eg. stored vehicles)</i>	More than 10 m from home		Less than 10 m from home		
		0		30		
13	Outbuildings not meeting FireSmart™ guidelines	More than 10 m from home		Less than 10 m from home		
		0		30		

## ZONE 1

(1.5 - 10 metres from HOME)

HAZARD FACTOR		CHARACTERISTICS AND POINT RATINGS			SCORE
14	Forest vegetation (trees)	Deciduous (leafy) - (poplar, aspen, birch)	Mixedwood (mix of tree types) - both deciduous (leafy) and coniferous (evergreen)	Coniferous (evergreen) - (spruce, pine, fir, cedar)	
		0	30	30	
15	Surface vegetation and combustible materials	Grass less than 10 cm long or non-combustible surface, low flammability plants		Grass more than 10 cm long or high flammability plants, accumulated needles, branches, logs	
		0		30	
<b>HAZARD SCORE - Total for Zone 1</b>					

## ZONE 2

(10 - 30 metres from HOME)

HAZARD FACTOR		CHARACTERISTICS AND POINT RATINGS			SCORE
16	Forest vegetation (trees)	Deciduous (leafy) - (poplar, aspen, birch)	Mixedwood (mix of tree types) - both deciduous (leafy) and coniferous (evergreen)	Coniferous (evergreen) - (spruce, pine, fir, cedar)	
				Separated	
		0	10	10	30
17	Flammable shrub spacing (coniferous - eg. cedar or juniper)	None	Scattered	Abundant	
		0	5	10	
18	Surface vegetation	None	Scattered	Abundant	
		0	5	10	
19	Low-lying tree branches (coniferous)	None		Present	
		0		10	
<b>HAZARD SCORE - Total for Zone 2</b>					



## ZONE 3

(30-100 metres from HOME) Complete where applicable

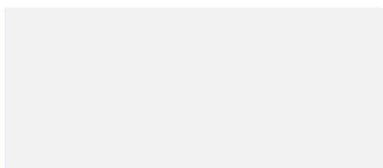
HAZARD FACTOR	CHARACTERISTICS AND POINT RATINGS	SCORE
Assess hazard factors 16 - 19 above for Zone 3 and enter score at right		
<b>HAZARD SCORE - Total for Zone 3</b>		

## TOTAL PROPERTY SCORE

HOME IGNITION ZONE ASSESSMENT TOTALS		SCORE
Home	Home and attachments ( <i>deck</i> )	
Non-Combustible Zone	0 - 1.5 m from home	
Zone 1	1.5 m - 10 m from home	
Zone 2	10 m - 30 m from home	
<b>Home and Non-Combustible Zone, Zone 1 and Zone 2 - SCORE:</b>		
Zone 3 ( <i>if applicable</i> )	30 - 100 m from home	
<b>TOTAL SCORE:</b>		

## HAZARD LEVEL

<b>Low</b> < 21 points	<b>Moderate</b> 21-29 points	<b>High</b> 30 - 35 points	<b>Extreme</b> > 35 points
---------------------------	---------------------------------	-------------------------------	-------------------------------



TOTAL SCORE OF HOME, NON-COMBUSTIBLE ZONE, ZONE 1, ZONE 2 AND ZONE 3

\* Note - FireSmart™ and associated Marks are trademarks of the Canadian Interagency Forest Fire Centre (CIFFC)

**PLEASE READ - Legal Disclaimer** - The information contained herein provides general information only. While it is believed to be accurate, it is provided without representation or warranty of any kind, including as to its accuracy or its suitability for the purpose(s) for which you may wish to rely on it. Accordingly any and all use of or reliance on such information shall be in your own discretion and at your own risk. For greater clarity, Canadian Interagency Forest Fire Centre (CIFFC) (FireSmart Canada) accepts no responsibility or liability for any injury, loss or damage, whether direct, indirect, special, incidental, punitive or consequential, that any person may sustain as a result of the information in, the results of, or anything done or omitted pursuant to, this assessment.

## HAZARD FACTOR GUIDE

Photos and graphics show condition of 'characteristic' by hazard factor



Open Eaves



Closed Eaves

**HAZARD FACTOR 4:**  
EAVES



**HAZARD FACTOR 7:**  
GROUND TO SIDING CLEARANCE

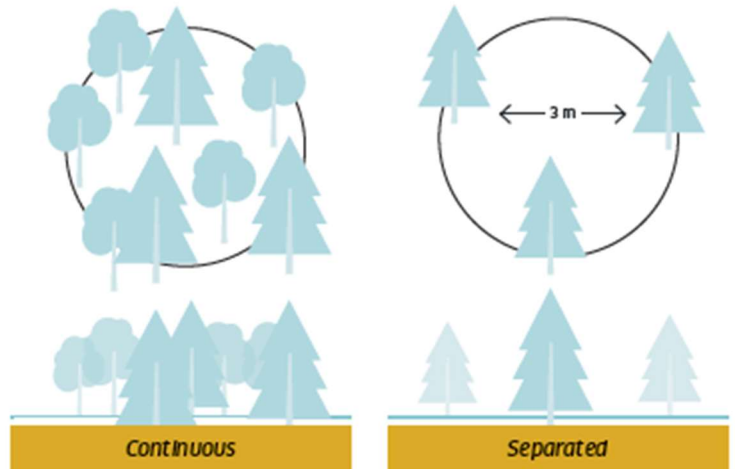


Mid to upper portion  
or crest of hill



Bottom or lower  
portion of hill

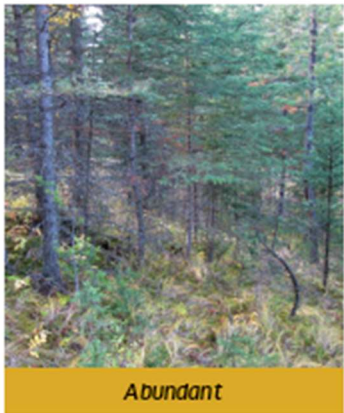
**HAZARD FACTOR 9:**  
POSITION ON SLOPE



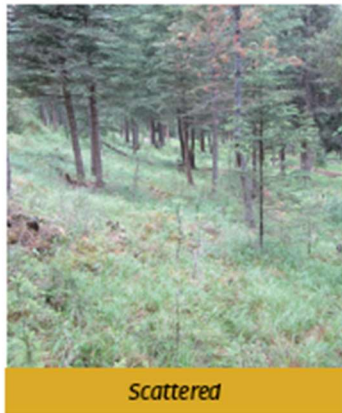
Continuous

Separated

**HAZARD FACTOR 16:**  
FOREST VEGETATION (TREES)



Abundant



Scattered

**HAZARD FACTOR 17:**  
FLAMMABLE SHRUB SPACING



Present



None

**HAZARD FACTOR 19:**  
LOW-LYING TREE BRANCHES



Abundant



Scattered

**HAZARD FACTOR 18:**  
SURFACE VEGETATION

## Assessor's Comments and Recommendations

Home / Non-combustible Zone (0 to 1.5 metres)

Yard / Zone 1 (1.5 to 10 metres)

Yard / Zone 2 (10 to 30 metres)

**Yard / Zone 3 (30 to 100 metres) – *Not applicable for Rebate***

**Home Considerations**

- ✓ Is your roof in poor condition? A roof in poor condition will not protect from sparks and embers. Fire resistance deteriorates over time; check manufacturer guidelines to assess roof condition and potential fire resistance.
- ✓ Is your chimney clean? Does it have proper clearances, screens and spark arrestors?
- ✓ Have you discussed wildfire damage and loss with your insurance provider?

**Yard Considerations**

- ✓ Is the area within 10 metres of buildings free of flammable trees, other vegetation and combustible materials?
- ✓ Are large capacity propane tanks within 10 metres of buildings? Are they clear of vegetation?
- ✓ Is fire suppression equipment readily available? Shovels, rakes, buckets and hoses should be easily accessible.
- ✓ Are burn barrels screened and at least 10 metres from combustible materials and buildings?
- ✓ Are overhead power lines clear of vegetation? Contact your service provider for assistance with removing trees in proximity to utility lines.

## Suggested Rebate Workplan

Following are the Local FireSmart Representative recommendations applicable to the Invermere FireSmart Rebate program and aligning with the homeowner's goals, capacities and willingness.

Priority 1:

---

---

Priority 2:

---

---

Priority 3:

---

---

Comments:

---

---

## Work Hours and Material Cost Estimate Form related to Rebate Workplan

The CRI program provides funding for FireSmart activities on homes and residential properties. Eligible activities are outlined in the table below<sup>2</sup>.

Eligible FireSmart Activity		Estimated Labour Hours <sup>3</sup>	Estimated Material Cost	Estimated Total Cost
<b>Home / Non-combustible Zone (0 to 1.5 meters)</b>				
Roofing	Installation of Class A UL/ASTM fire-rated roofing (Metal, clay tile or asphalt shingles)			
	Installation of non-combustible gutters			
	Removal of needles, leaves and other combustible materials (e.g. overhanging branches)			
	Installation of closed eaves and vents with 3 mm (1/8") screening or ASTM ember resistant rated vents			
Siding	Installation of ignition resistant (fibre cement board, log) or non-combustible (stucco, metals, brick/stone)			
	Correction of all gaps, cracks, missing siding or holes where embers could accumulate, lodge or penetrate			
	Create 15 cm ground-to-siding non-combustible clearance			
Windows and doors	Installation of tempered glass in all doors and windows			
	Installation of multi-pane glass small/medium and treated in all windows and doors			
	Correction of gaps in doors (including garage doors) where embers could accumulate, lodge or penetrate			
Balcony, Deck, Porch or Open Foundation	Ensure that there are no gaps or cracks where embers could accumulate, lodge or penetrate			
	Removal of combustible debris under balcony, deck, porch or open foundation			
	Deck is constructed out of heavy timbre, non-combustible or fire-rated construction with non-combustible surface			

<sup>2</sup> As per the FireSmart Assessment Work Hours Estimate Form, Updated 01/18/2022. <https://firesmartbc.ca/wp-content/uploads/2020/06/FireSmart-Assessment-Work-Hours-Estimate-Form-CRI.pdf>

<sup>3</sup> The cost per hour is \$29.00/hr. and is based on the *FireSmart Canada hourly volunteer compensation rate*.

Eligible FireSmart Activity		Estimated Labour Hours <sup>4</sup>	Estimated Material Cost	Estimated Total Cost
<b>Yard / Zone 1 (1.5 to 10 metres)</b>				
Woodpiles	Relocate woodpiles more than 10 metres from home			
Unmitigated outbuildings	Relocate outbuildings more than 10 metres (50 feet) from home			
Trees	Replacement or removal of mixed wood and/or conifer species			
Surface vegetation	Ensure a well-maintained lawn (10 cm or shorter, low flammability, low growing discontinuous plants)			
	Removal of flammable plants, continuous plants or tall-growing plants			
	Removal of twigs, branches, logs and accumulations of tree needles or leaves and other combustible materials			
<b>Yard / Zone 2 (10 to 30 metres)</b>				
Forest	Planting of healthy and properly spaced deciduous			
	Replacement or thinning of mixed wood (both deciduous and conifer)			
	Creation of separated and thinned conifers (if present)			
Surface vegetation	Removal of surface vegetation within 10-30 metres			
	Removal or proper spacing of flammable shrubs within 10-30 metres			
	Removal of low tree branches within 2 metres of the ground			

<sup>4</sup> The cost per hour is \$29.00/hr. and is based on the *FireSmart Canada hourly volunteer compensation rate*.

## Post-Assessment / Rebate Eligibility

A post-assessment by a Local FireSmart Representative is mandatory to claim a rebate. Upon completion of recommended activities, contact the Invermere FireSmart program to schedule a post-assessment to confirm eligibility for the rebate.

Email [FireSmart@Invermere.net](mailto:FireSmart@Invermere.net) or call (250) 342-3200 ext. 1303

Invermere FireSmart Representative Name:

---

Date of Visit:

---

Confirmed Eligibility for Rebate (Yes / No):

---

Eligible amount (up to \$500):

---

Comments:

---

*Thank you for doing your part in making our community more resilient to wildfires.*

