



Transportation Master Plan District of Invermere

Public Information Session

March 2, 2022



URBAN
SYSTEMS

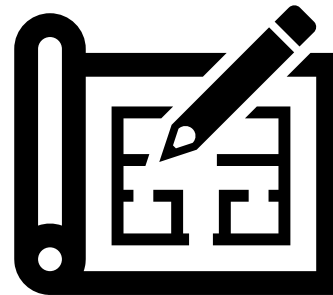
How to Participate in Zoom





What is a Transportation Master Plan?

- A **long-term** plan for the municipality's transportation network
- Considers all transportation modes (walking, bicycling, driving)
- Gives an idea of **what** improvements will be required and **when**
- Considers **population and employment** growth
- Considers new and emerging **technologies, trends and policies**



Why are we updating the 2006 Transportation Study?



To reflect changes in expected growth patterns which have resulted in changing needs for road network improvements



To improve safety for walking, rolling, bicycling and driving, through innovation and new industry standards

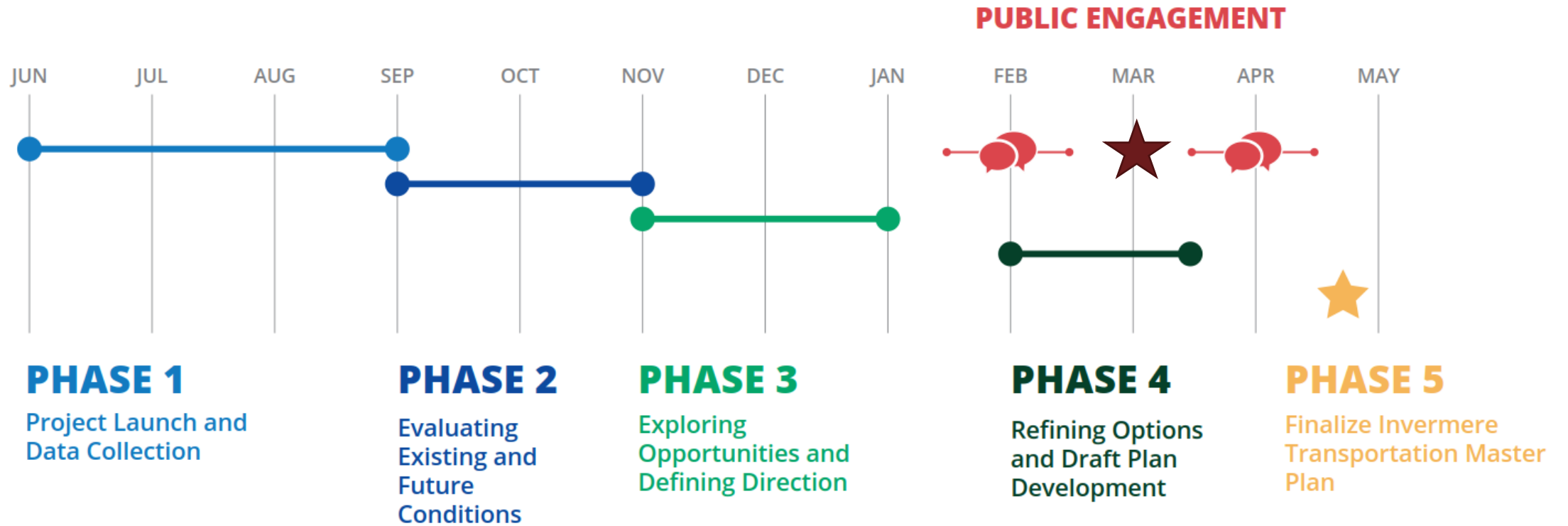


To develop a strategy for prioritizing new transportation improvement projects and policy changes



To ensure that there's a continued effort to integrate transportation improvements with the Joint Active Transportation Plan recommendations

Project Progress





Phase 1 – Project Launch & Data Collection



DISTRICT OF INVERMERE

UPDATED TRANSPORTATION STUDY



This report is prepared for the sole use of District of Invermere. No representations of any kind are made by Urban Systems Ltd. or its employees to any party with whom Urban Systems Ltd. does not have a contract.

0953.0062.13 / January 2006

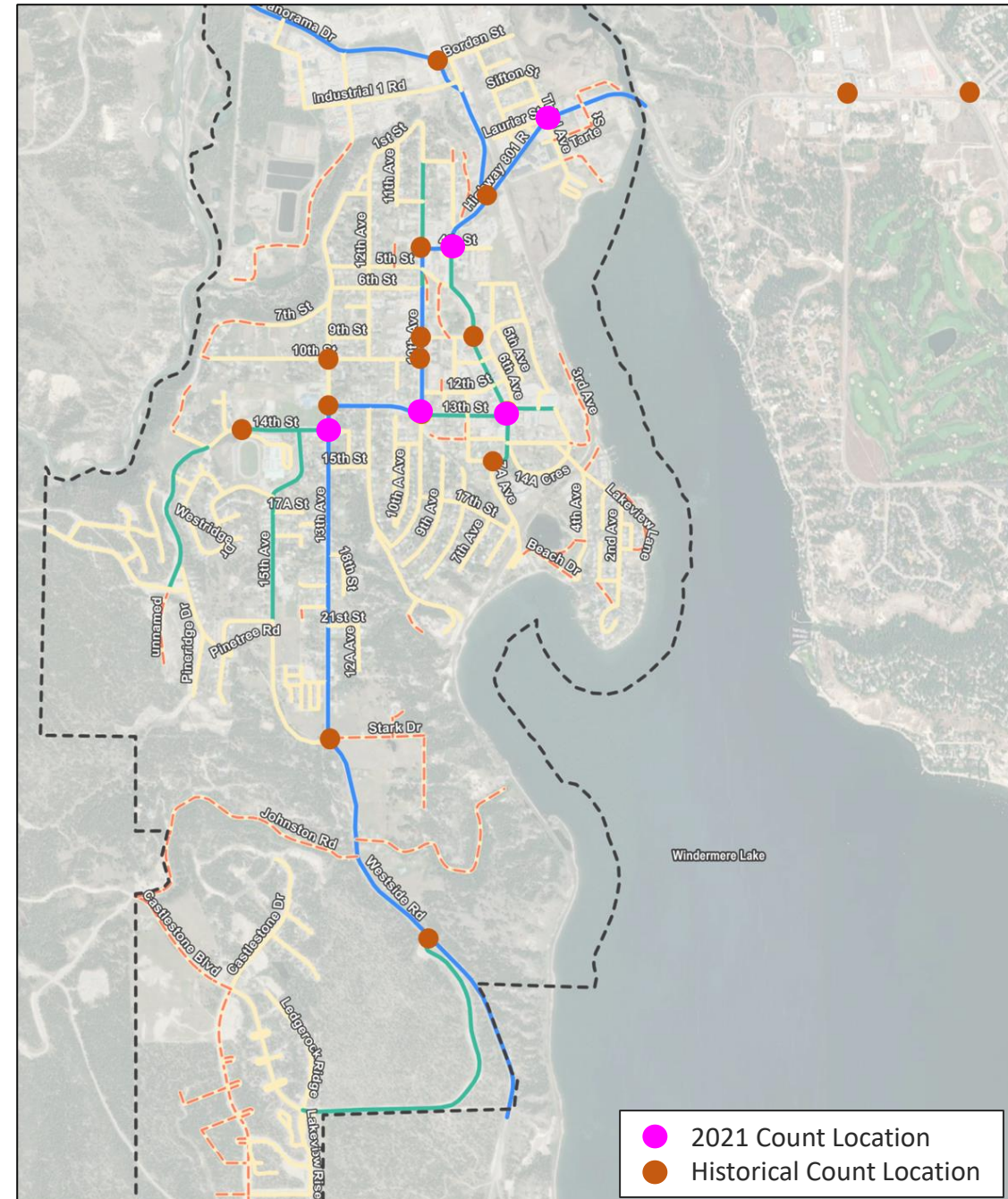
URBANSYSTEMS.
100-2886 Sunridge Way NE
Calgary AB T1Y 7H9
Telephone: 403-291-1193
Fax: 403-291-1374





Phase 1 – Project Launch & Data Collection

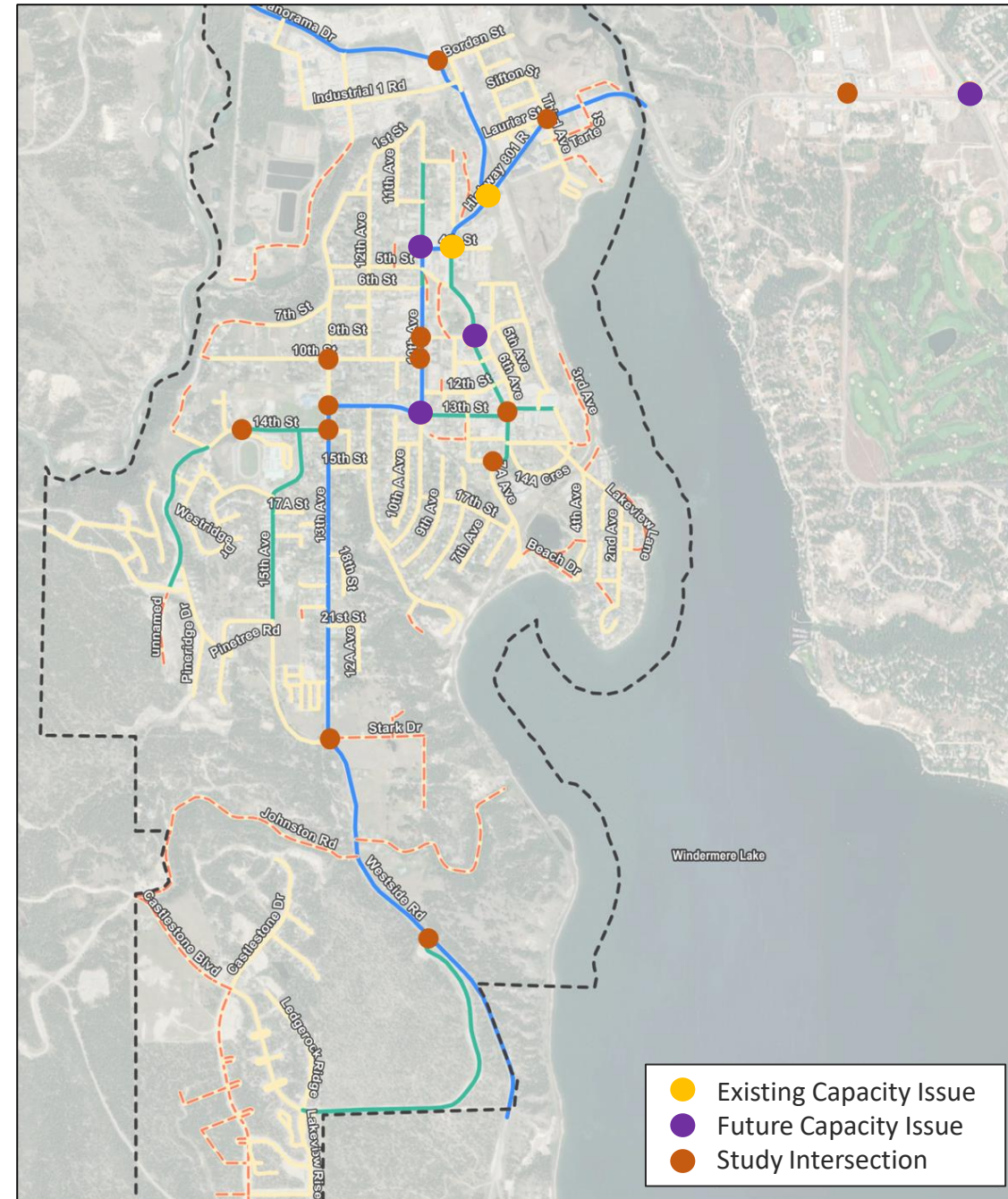
- Traffic counts
- Historical traffic counts
- Road and trail network inventory
- Review of census data





Phase 2 – Evaluating Existing & Future Conditions

- Existing traffic capacity issues at
 - Panorama Drive and Third Street
 - 7 Ave and 4 St
- Future traffic capacity issues at
 - Highway 95 & Athalmer
 - Panorama Drive and Third Street
 - 7 Ave and 4 St
 - 10 Ave and 4 St
 - 7 Ave and 9 St
 - 10 Ave and 13 St





Phase 3 – Exploring Opportunities and Defining Direction



Transportation Plan Vision Statement

Invermere's transportation network is safe, accessible, connected, and **sustainable**. It provides **healthy** and **economical** mobility options where residents and visitors alike can travel accessibly by their mode of choice, experiencing the small-town character in a **beautiful mountain setting**.





Phase 3 – Exploring Opportunities & Defining Direction - Goals



Safe

Improve the safety and accessibility for all road users, prioritizing vulnerable road users.

Connected

Provide both direct and enjoyable route options to destinations within the community.

Ecologically Sustainable

Commit to sustainably growing and improving its transportation network to ensure the well-being of the current and future community.

Economically Sustainable

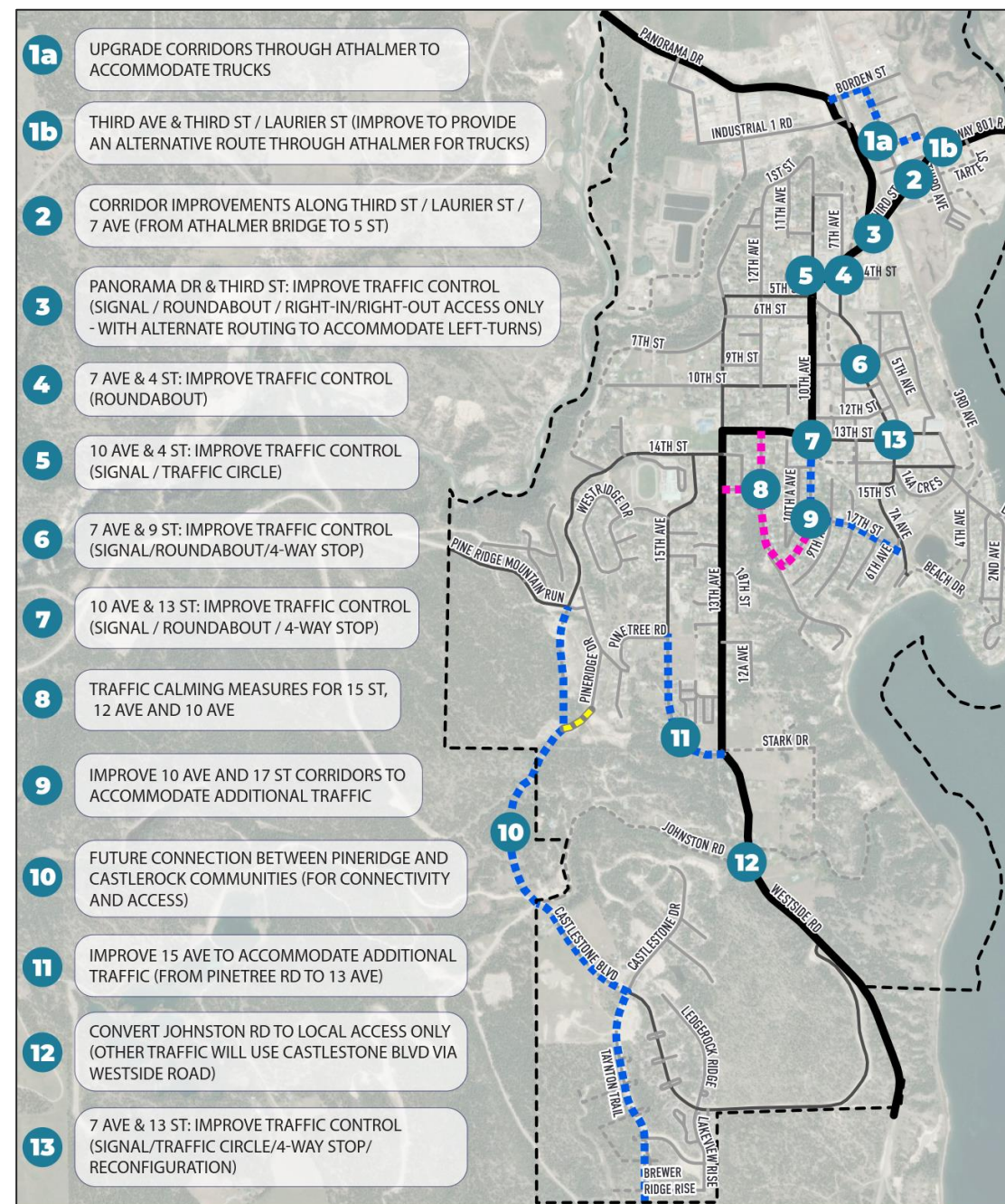
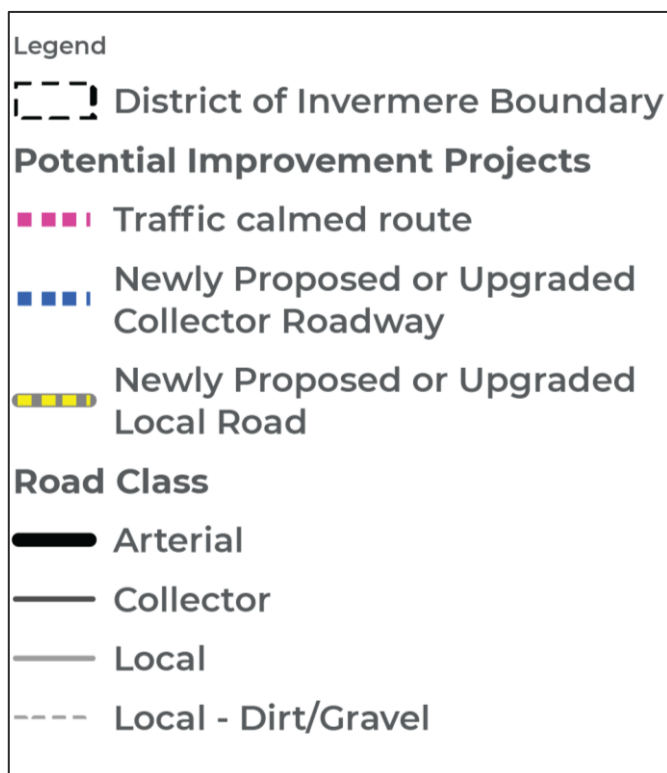
Ensure cost-effective and reliable infrastructure improvements by coordinating improvements with other asset renewals.

Innovative

Explore emerging and innovative methods for managing present and future transportation demands and technologies.



Phase 3 – Exploring Opportunities & Defining Direction





Community Engagement Process

■ Completed

○ Online Survey

- January 17th to 31st, 2022
- 366 responses
- What We Heard Report (online)

■ Ongoing

○ Webpage:

- <https://invermere.net/invermeres-transportation-master-plan/>

■ Upcoming

- Follow up online survey (March 3rd to 14th, 2022)
- Virtual Public Information Session #2 – Draft Plan (mid April)



Search site

WEATHER IN INVERMERE

BROKEN CLOUDS

2°C

17 FEB, 2022

Invermere, CA

We're updating the Transportation Master Plan (TMP) to shape the future of all modes of transportation in Invermere and respond to ongoing growth and development. A previous comprehensive Transportation Study was completed in 2006 and can be accessed [here](#). The update will include a more wholistic transportation approach, considering recommendations outlined in the Joint Active Transportation Plan (JATP) which was developed in partnership with the Shuswap Band in 2021. The JATP can be accessed [here](#).

Transportation is an essential part of everyday life, affecting our community's health, environment, and economy. An efficient transportation network allows people and goods to safely move in and around Invermere.

Why are we updating the Transportation Study?

WHY we're updating the Transportation Study

- To reflect changes in expected growth patterns which have resulted in changing needs for road network improvements
- To improve safety for walking, rolling, bicycling and driving, through innovation and new industry standards
- To develop a strategy for prioritizing new transportation improvement projects and policy changes
- To ensure that there's a continued effort to integrate transportation improvements with the Joint Active Transportation Plan recommendations

Important Links

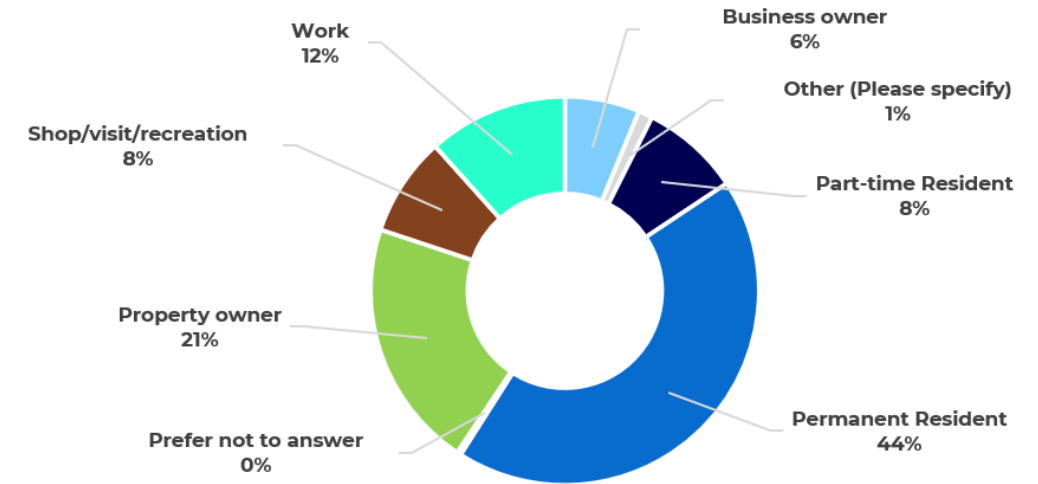




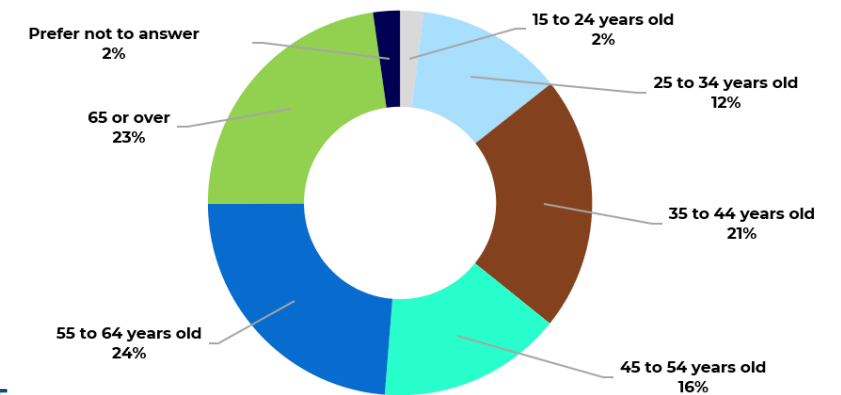
Summary of What We Heard

(from Online Survey #1)

- Diverse set of respondents
- Visitors, property owners, permanent residents
- Range of ages
- Fairly split between male and female respondents
- Single family homes (74%)
- Household of two people (50%)



ABOUT THE
RESPONDENTS



AGE OF
RESPONDENTS

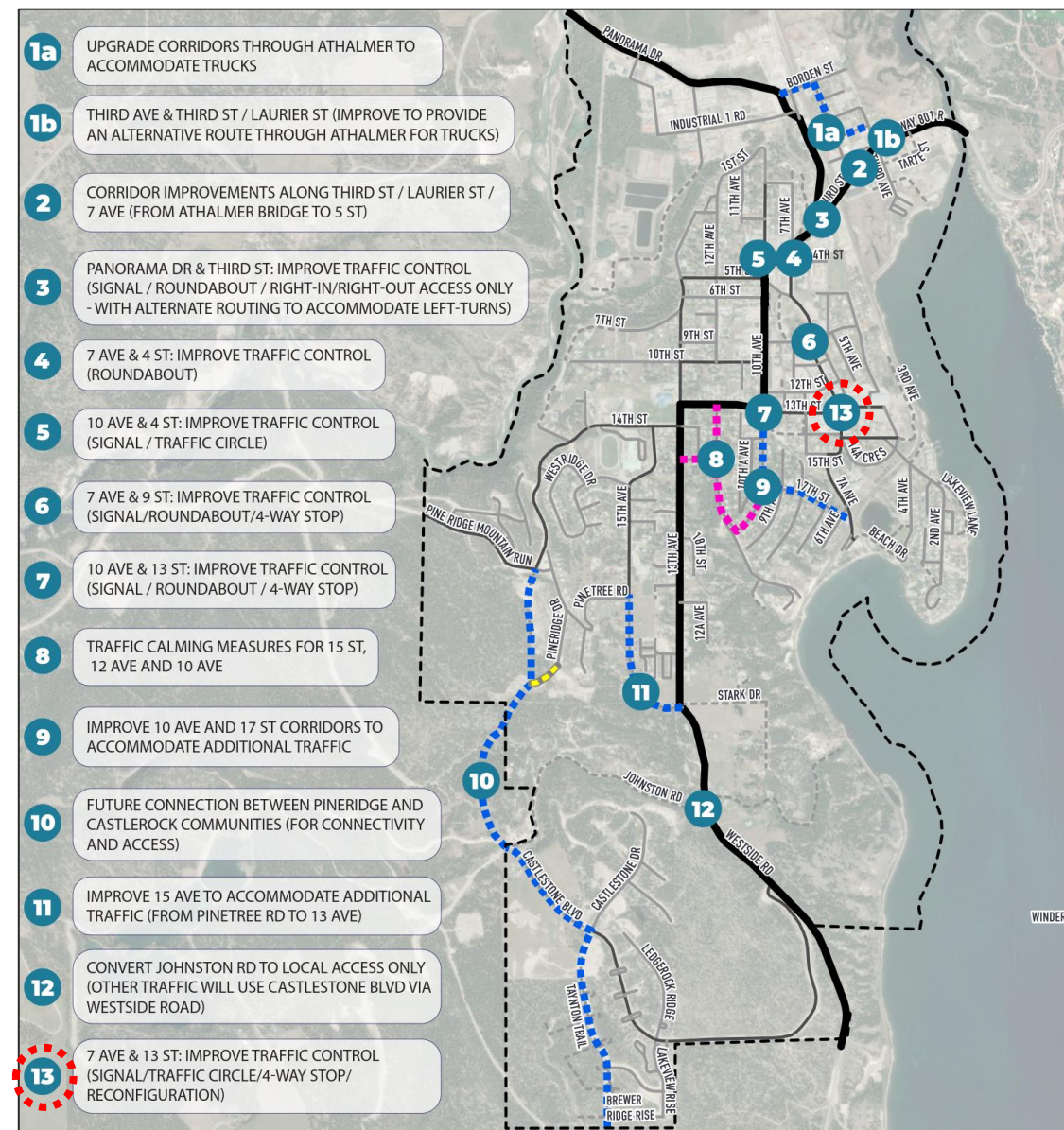




Summary of What We Heard

(from Online Survey #1)

- Responses supportive of:
 - Vision (approximately 60%)
 - Goals (over 90%)
 - Objectives (over 80%)
- Proposed Network
 - Top three ranked priorities are:
 - Improvement Project 3
 - Improvement Project 1a & b
 - Improvement Project 2
 - Next three were projects 4, 5 and 10
 - Projects 6, 8 and 9 received the lowest rankings
 - Addition of 7th Avenue and 13th Street





Summary of What We Heard

(from Online Survey #1)

SUPPORT FOR STRATEGIES

A Safe Community

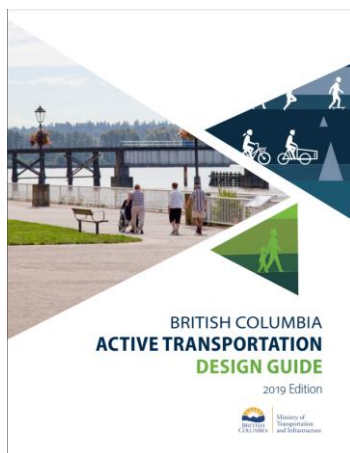
Most important:

- Review sidewalk requirements on roadways and update to reflect best practices

A Connected Community

Most Important:

- Connect new bicycle and pedestrian infrastructure to existing infrastructure





Summary of What We Heard

(from Online Survey #1)

SUPPORT FOR STRATEGIES

An environmentally sustainable community

Most important:

- Develop support programs and initiatives that encourage people to walk and bicycle. Include wayfinding improvements, walking clubs, and the Safe Routes to School Program





Summary of What We Heard

(from Online Survey #1)

SUPPORT FOR STRATEGIES

An economically sustainable community

Most important:

- Implement a road and active transportation network improvements in conjunction with each other and/or other infrastructure projects

An Innovative community.

Most Important:

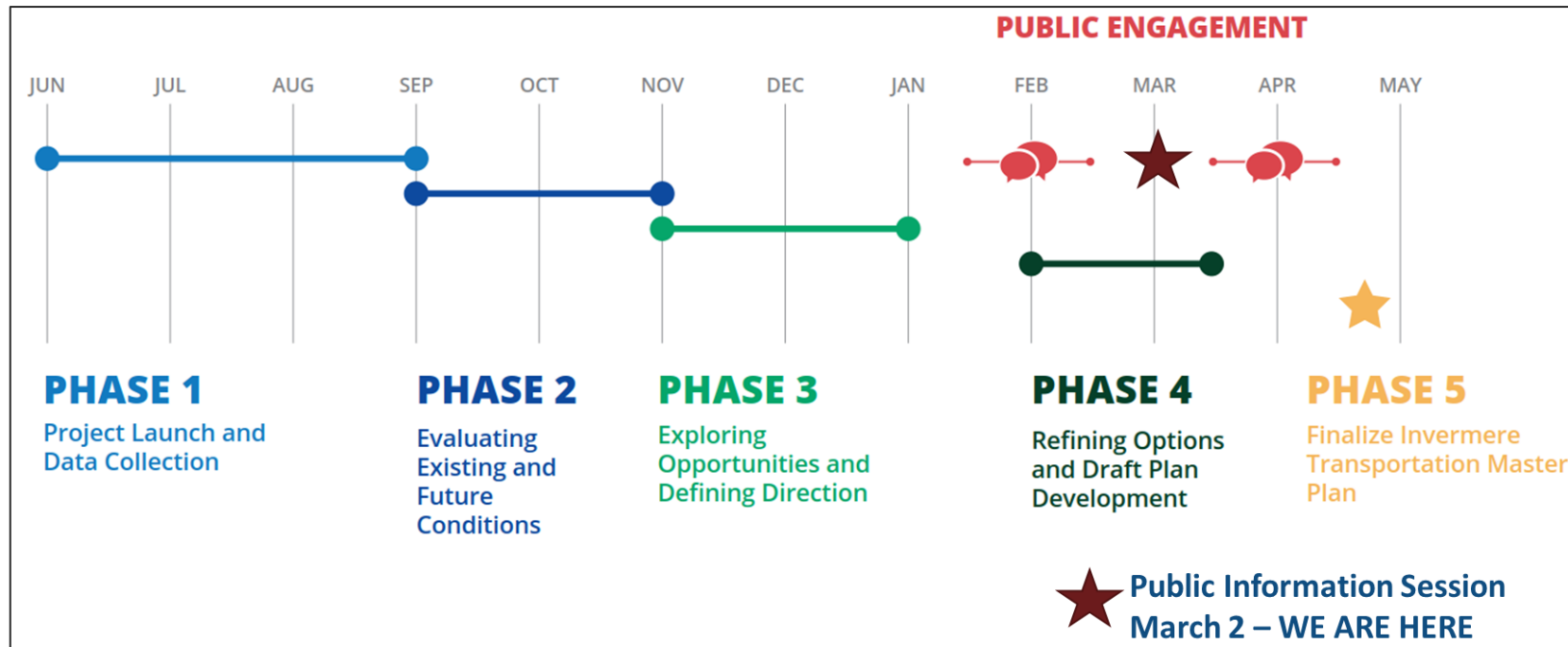
- Provide unique infrastructure to facilitate the use of e-bicycles and e-scooters (ex. E-bike share or e-scooter share, charging stations)





Next Steps

- Online Survey #2 – Follow up survey (March 3rd to 14th)
- Phase 4 - Refining Options and Draft Plan Development
 - Present Draft Plan to Council and public mid April
- Finalize Plan, present to Council (end of April)





Transportation Master Plan District of Invermere

Thank you



URBAN
SYSTEMS